

Nurturing evidence-informed policy and practice in the HSE

Anne Pardy, Health Service Executive (HSE)

Dr. Aisling Sheehan, Centre for Effective Services (CES)

INTeRACT for Health: Increasing Integrated Knowledge Translation Capacity for Impact
Case Study: Integrated Knowledge Translation in Action

Overview

- Background to the Nurture Programme – Infant Health and Wellbeing
- Key deliverables of the Nurture Programme
- Approaches to creating and using knowledge for evidence-informed policy and practice
- Key challenges and opportunities

Background to the Nurture Programme

- Multi-disciplinary universal child health service in Ireland, delivered through maternity and primary care services
- Significant evidence base on the importance of prevention and early intervention in the early years for improved health and wellbeing outcomes.
- Prevention and early intervention approaches a strong feature of numerous Government policies and strategies
- The Nurture Programme is a quality improvement programme (2015-2019) to strengthen the information and professional supports that are provided to all parents during pregnancy and in the **first three years** of their baby's life
- The programme is made possible by a grant from the Atlantic Philanthropies to the Katharine Howard Foundation, It is implemented within the Health Services Executive and with implementation support provided by the Centre for Effective Services.



3

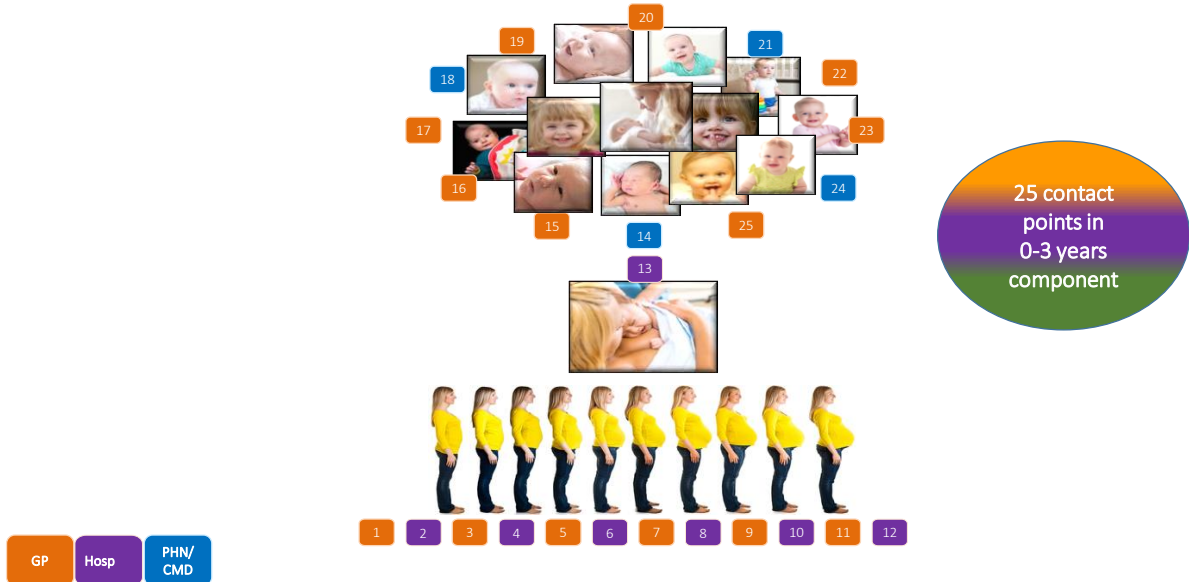
The vision of the Nurture Programme: to improve child health outcomes for the 0-2s

- Multiple child health subject areas, each with developing evidence base
- System wide implementation
- Consistency in message
- New approaches to service delivery – including social media
- Align with other public health programmes and campaigns



4

Service Context : National Healthy Childhood Programme



- key deliverables

- New child health website for parents mychild.ie
- New healthy pregnancy book
- Updated Caring for Your Baby / Child books
- Training and professional development programme and framework
- Standards for antenatal education
- Infant mental health resources for staff and parents
- National standardised child health record for professionals
- Standardised screening tools

The ATLANTIC Philanthropies

HE Feidhmeannacht na Seirbhíse Sláinte Health Service Executive

The Community Foundation for Ireland

KHF KATHARINE HOWARD FOUNDATION

CES CENTRE FOR EFFECTIVE SERVICES

Approaches to creating and using knowledge

- 1 **Scoping and evidence reviews** to inform choice of interventions and implementation methods
- 2 **Consultation and co-design** with stakeholders – events, interviews, focus groups, surveys, user testing
- 3 **National implementation teams** with ongoing technical/ implementation support



1 Scoping and evidence reviews

- Multiple topic-specific evidence reviews including:
 - National Healthy Childhood Framework Evidence Review 2017
 - Nurture programme Scoping Report 2016
 - Infant Mental Health Evidence Review 2015
 - Review of National Child Health Records 2018
- Quality assurance processes:
 - Subject Matter Expert Primary Development and Review Processes
 - User Testing – parents and practitioners
 - Best Practice in Digital Development – NHS Choices methodology



2

Consultation and co-design

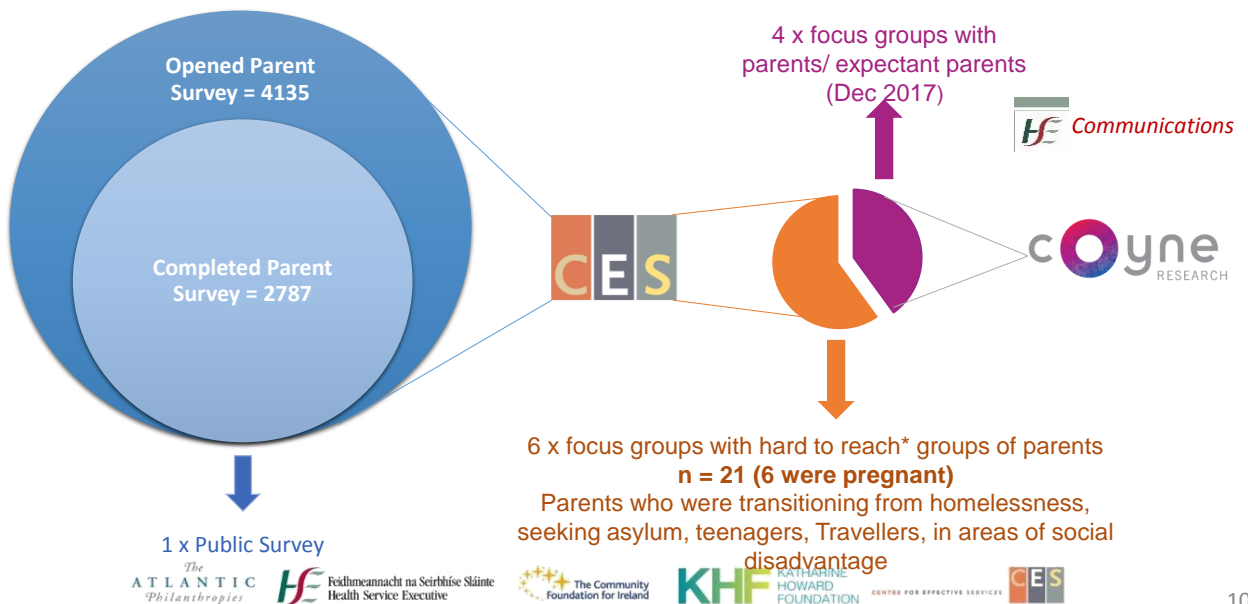
- Knowledge co-created with range of stakeholders
- Consultation and engagement with **parents** to:
 - Inform the work of Nurture and ensure it meets parents' needs
 - Test outputs from Nurture and use feedback to inform improvements, e.g. website co-designed with parents
- Consultation and engagement with **practitioners** to:
 - Explore implementation enablers and barriers
 - Explore implementation outcomes including acceptability, adoption, appropriateness/feasibility, and fidelity
 - Co-develop strategies for effective and sustainable implementation strategies



2

*Parents for whom there may be more barriers to participating in public services

Example: Parent Consultation



2

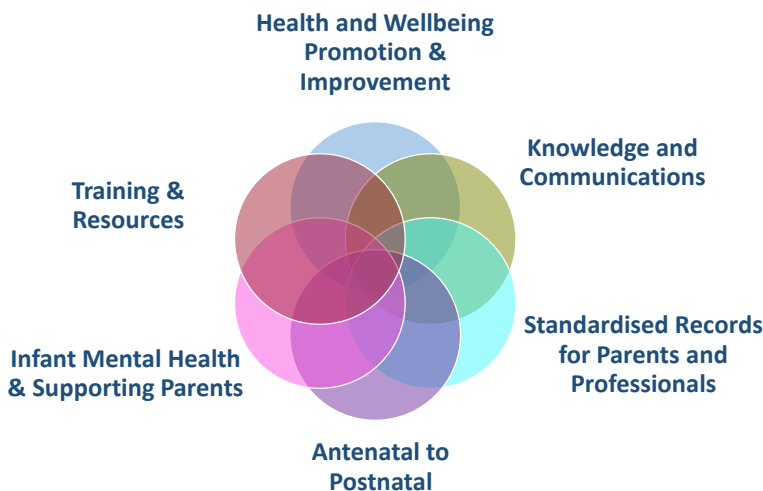
Example: Workshop with antenatal educators



A stakeholder workshop was held on the 15th January 2018 with over 100 stakeholders, at which feedback was sought on draft antenatal standards. Participants were allocated to tables with facilitators and notetakers and discussed what they liked about the standards, and suggestions for improvement and supporting their implementation.

3

6 Integrated Implementation Teams



- Implementation teams provide an accountable structure to move the work through stages of implementation
- Geographic and discipline representation
- Range of expertise in content, systems, data and implementation.

Challenges and opportunities

Some challenges

- Prioritising child health and wellbeing - competing demands and staff shortages
- Approaches can challenge existing culture and organisational norms
- Pace versus process
- Resourcing professional development supports required for practice change (e.g. coaching and mentoring)
- Poor ICT infrastructure
- Governance not clear – challenging for sustainability

Some opportunities

- Building on good practice and embedding work in existing structures
- 3 year funding period for exploration, planning and resourcing
- Highly committed staff with great range of expertise and experience
- External oversight
- Commitment to use of data and evidence
- Funding of 9 posts to support local implementation

Thank You!

Get in touch:

anne.pardy@hse.ie

asheehan@effectiveservices.org

Programme information:

<https://www.hse.ie/eng/health/child/nuture/>

