

NOVA

IMS

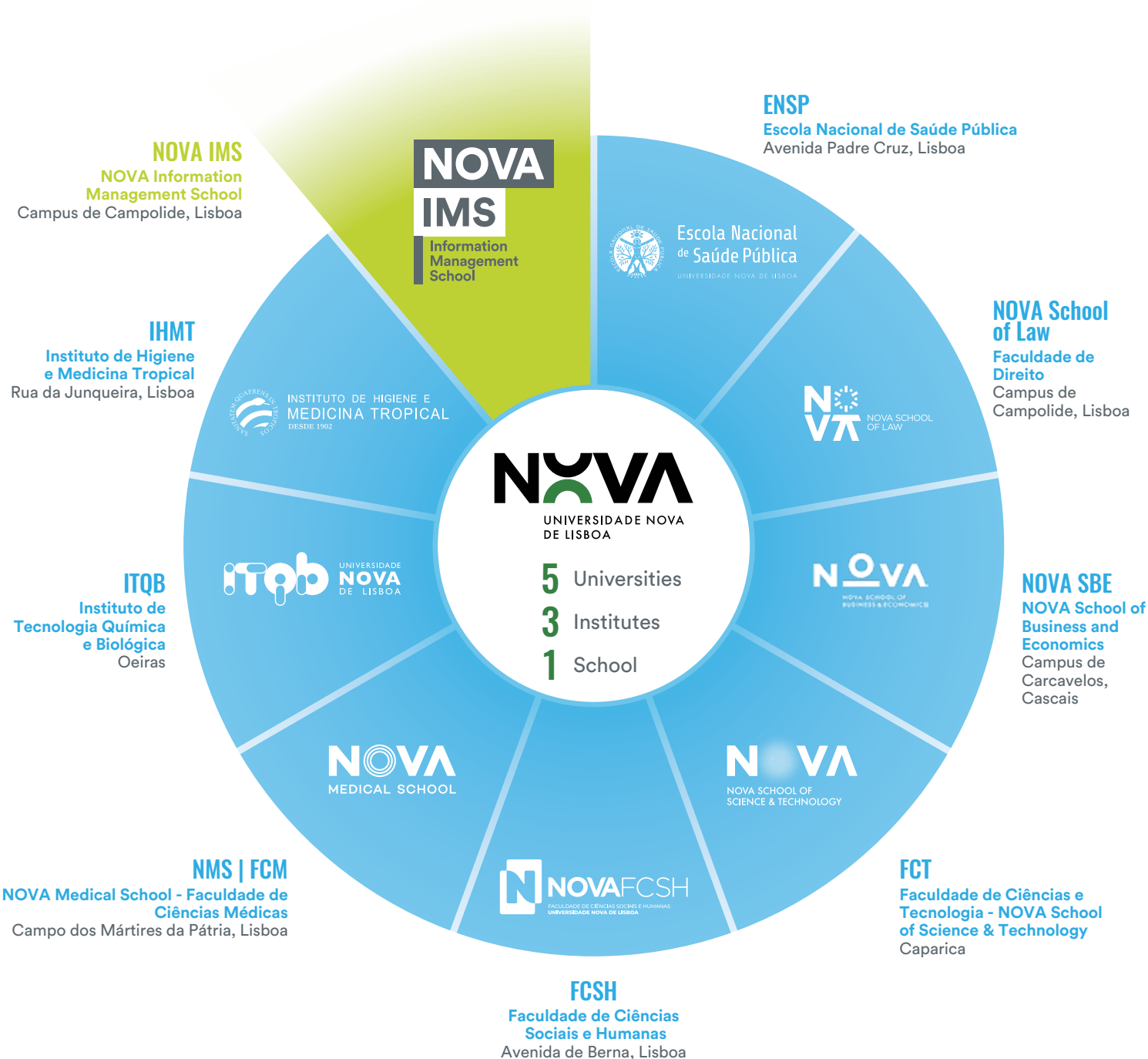
Information
Management
School

INFORMATION SHEET ERASMUS +

2024-2025



NOVA IMS is the School of Information Management and Data Science of the Nova University of Lisbon. Founded in 1989 as a response to the shortage of senior management specialists in information management, and the growing need to use information technologies, NOVA IMS assumes as its mission the training of leaders capable of working in a global and competitive environment, combining innovative research in information management with a stimulating and creative teaching environment, to generate and disseminate knowledge in a global society, aiming to continue to assert itself more and more and better as a leading School in Information Management and Data Science, through a clear strategic ambition to build a Future of Excellence.





Welcome to NOVA IMS

We are excited to welcome you to our vibrant community of students, faculty, and staff. This is an outstanding opportunity to define your academic, professional and personal future. You will experience a truly global experience with students and professors from several countries.

Lisbon is a beautiful and historic city with a rich culture and vibrant life. You will have the opportunity to explore the city, and the Portuguese landscape and good weather.

NOVA IMS is a leading university in Portugal in data science with a strong focus on research and innovation. We offer a wide range of undergraduate and postgraduate programs in information management, data science, data driven marketing, statistics, among others.

We are committed to providing our students with a high-quality education and a supportive and inclusive environment. We have a variety of student services available to help you succeed, with our ERASMUS office.

We are here to support you every step of the way, being your contact at NOVA IMS. We will be happy to answer any questions you have about the university, the city, or the country.

We hope you will take this opportunity to experience the best of what Lisbon, NOVA IMS, and Portugal have to offer. We look forward to welcoming you to our community!



Vítor Santos

Erasmus Scientific
Coordinator

Institution

Name: Universidade Nova de Lisboa

Erasmus Code: P LISBOA03

Faculty: Nova Information Management School - NOVA IMS

Address: Campus de Campolide, 1070-312 Lisboa, Portugal

Phone Number: +351 213 828 610

Web page: www.novaims.unl.pt

Erasmus+ Mobility: <https://www.novaims.unl.pt/en/education/students/student-mobility-programs/>

Erasmus Office Contacts



Ana Sousa / Hugo Caldeira
Erasmus Office
erasmus@novaims.unl.pt



Vítor Santos
Erasmus Scientific
Coordinator
vsantos@novaims.unl.pt



Joana Lino
Erasmus Coordinator
jlino@novaims.unl.pt



Catarina Silva
Erasmus
Academic Services
csilva@novaims.unl.pt





We are pioneers in converting data into value with purpose.



+3.600

Students

28%

Foreign Students

+82

Nationalities

100%

Employment Rate^(*)/^(**)

€1.394

Average Monthly Income⁽¹⁾

1

Doctoral Program

9

Master Degree Programs

21

Postgraduate Programs

3

Bachelor's Degree

202

No. of Teaching Staff

79

No. of Doctorate Teaching staff

+ - 50

International Teaching Staff

63

No. of Non-Teaching Staff

Data Science

Data-Driven Marketing

Information Systems

Geoinformatics

120

No. of Scientific Articles in Journals Indexed in SCOPUS (with targets) in 2022

* Independent ObipNOVA 2019 report on NOVA IMS graduates. ** Employment rate measured according to active graduates.

1st WORLD EUROPE PORTUGAL

Master Degree in Information Management

with a specialization
Business Intelligence
for the 5th consecutive year

Postgraduate Program in Information Management and Business Intelligence in Healthcare

7 of NOVA IMS' Master and Postgraduate Programs were ranked in the TOP of the world Best Masters Ranking 2022 by Eduniversal - international agency that publishes the annual ranking of the best MBA and Master's degrees in the world.



EDUNIVERSAL
RANKING 2022
BEST MASTERS

Master Program in
Information Management
specialization in
Business
Intelligence

1st PORTUGAL
1st EUROPE
1st WORLD

specialization in
Information Systems
Management

1st PORTUGAL
2nd WESTERN
EUROPE

Master Program in
Data Science
and Advanced
Analytics

1st PORTUGAL
1st WESTERN
EUROPE

Master Program in
Statistics and
Information
Management
specialization in
Risk Analysis
and Management

1st PORTUGAL
4th EUROPE
4th WORLD

Postgraduate
Program in
Information
Management
and Business
Intelligence
in Healthcare

1st PORTUGAL
1st EUROPE
1st WORLD

Postgraduate
Program in
Digital
Marketing
and Analytics

1st PORTUGAL
3rd WESTERN
EUROPE

Postgraduate
Program in
Enterprise Data
Science
and Analytics

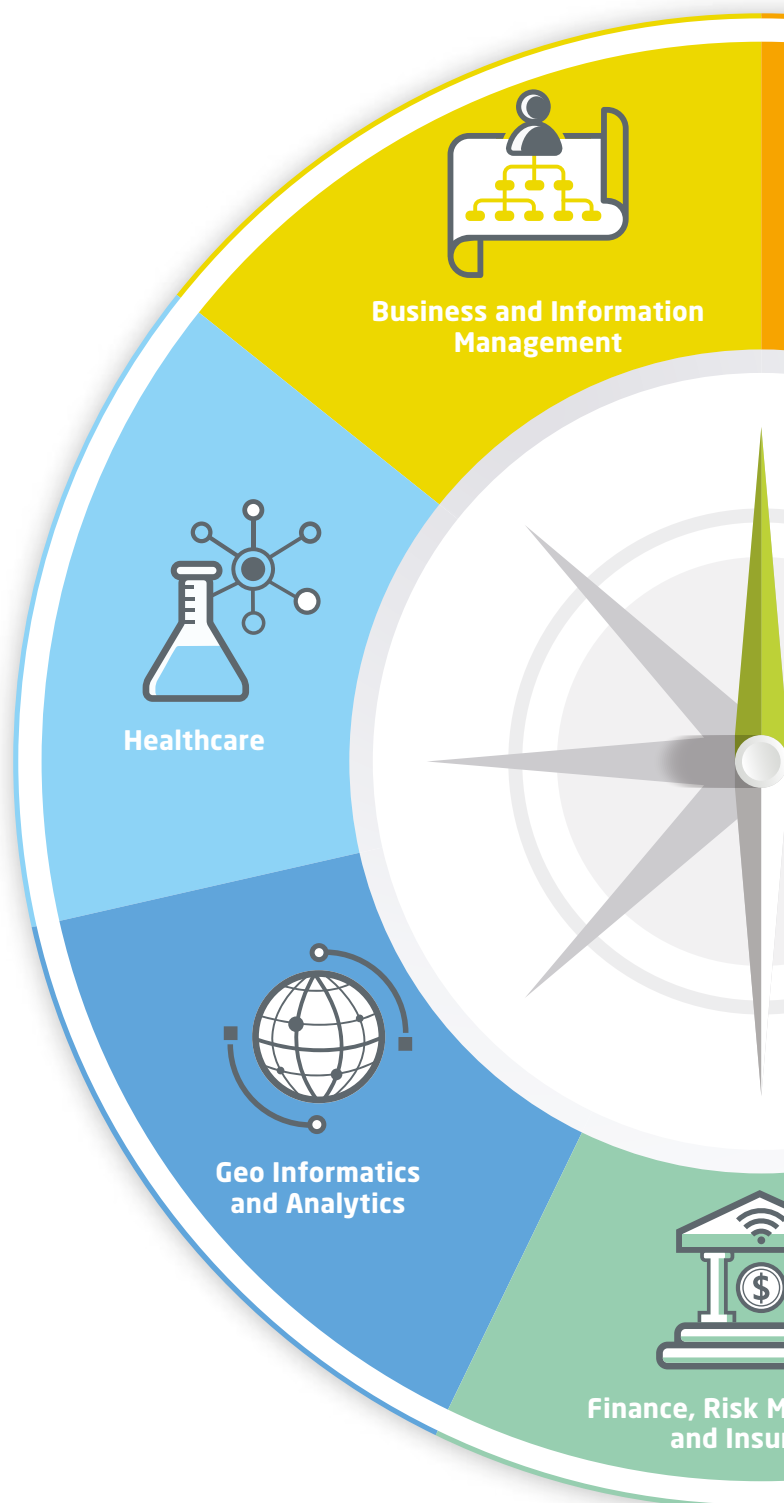
1st PORTUGAL
3rd EUROPE
3rd WORLD

PG	Intelligence Management and Security
	Business Intelligence
M	Data Science and Advanced Analytics with a specialization in Business Analytics
	Information Management with a specialization in Business Intelligence
BD	Information Management

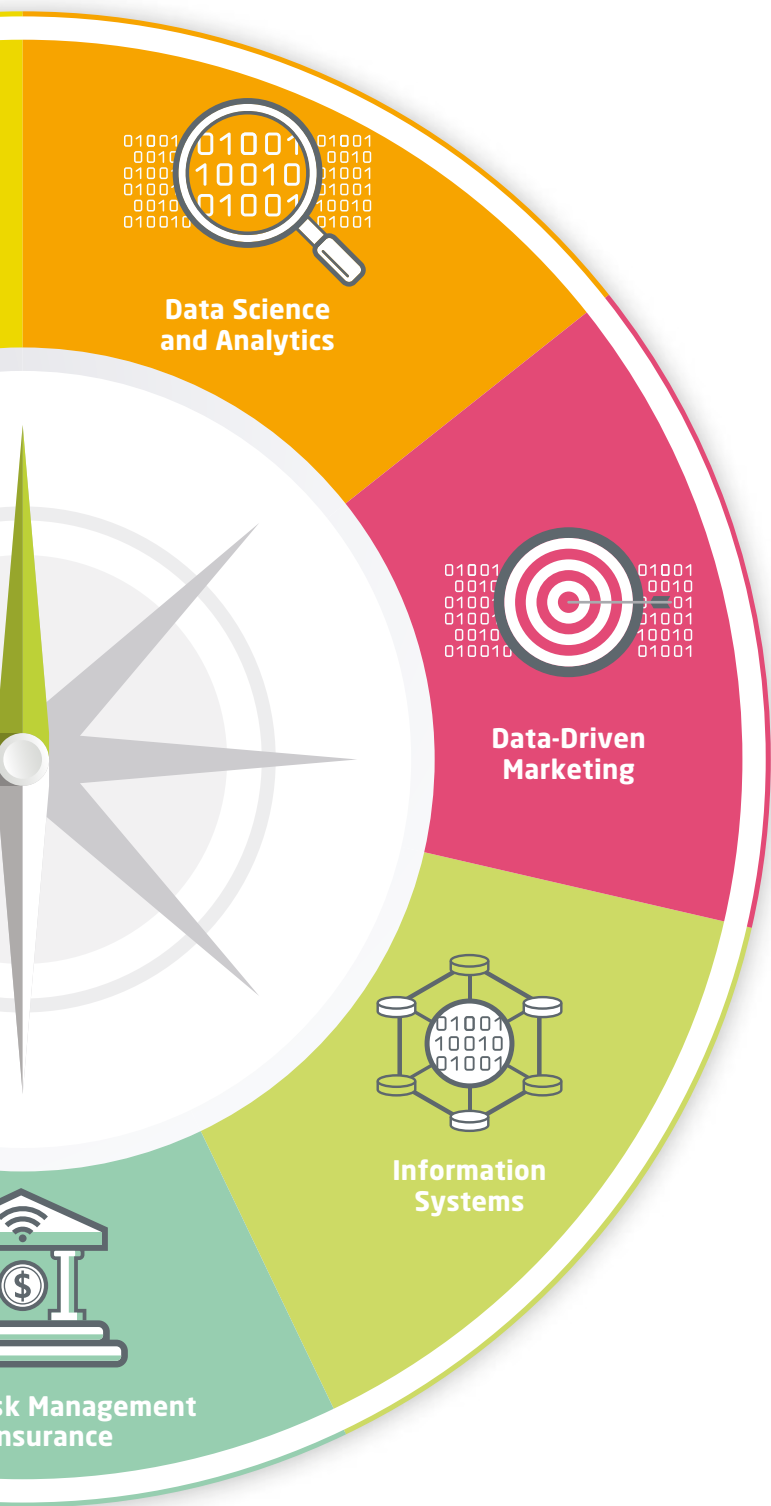
PG	Information Management and Business Intelligence in Healthcare
M	Clinical Research Management

PG	Geographic Information Systems and Science
	Geospatial Data Science
M	Geographic Information Systems and Science • with a specialization in Geographic Information Systems and Science
	• with a specialization in Geospatial Data Science
	Geospatial Technologies

PG	Data Science for Finance
	Financial and Budgetary Management and Control
	Financial Markets and Risks
	Risk Analysis and Management
M	Law and Financial Markets
	Statistics and Information Management with a specialization in Risk Analysis and Management



PG - Postgraduate Program; **M** - Master Degree Program; **BD** - Bachelor's Degrees



Data Science and Analytics

Business Intelligence & Analytics for Hospitality & Tourism

Enterprise Data Science & Analytics

PG Information Analysis and Management

Statistical Systems

- with a specialization in Central Bank Statistics
- with a specialization in Official Statistics

Data Science and Advanced Analytics
with a specialization in Data Science

M

Statistics and Information Management
with a specialization in Information Analysis and Management

BD Data Science

Data-Driven Marketing

Data Science for Marketing

Digital Marketing and Analytics

PG

Marketing Intelligence

Marketing Research and CRM

Data-Driven Marketing

- with a specialization in Data Science for Marketing
- with a specialization in Digital Marketing and Analytics
- with a specialization in Marketing Intelligence
- with a specialization in Marketing Research and CRM

M

Information Systems

Digital Enterprise Management

PG

Digital Transformation

Information Systems Management

Information Management

with a specialization in Digital Transformation

M

Information Management

with a specialization in Information Systems Management

Information Systems Management
(Double Degree)

BD

Information Systems

Risk Management and Insurance

Accreditations and Certifications



The Quality Management System

The Quality Management System of NOVA IMS has the quality certification according to the norm NP EN ISO 9001:2015 by APCER, in the provision of services to students and support the programs at NOVA IMS.



Erasmus Mundus Program

The master degree program in Geospatial Technologies is part of the European Commission's Erasmus Mundus program, and it has been selected as one of the best European Master degree programs.



AACSB

The double degree master program in Information Systems Management is developed in partnership with the University of Ljubljana, which is accredited by AACSB (Association to Advance Collegiate Schools of Business).



Eduniversal

Seven of NOVA IMS' Master and Postgraduate Programs were ranked by Eduniversal an international agency that publishes annual rankings of the best Masters and MBA programs in the world.



Computing Accreditation Commission

NOVA IMS has the 1st Bachelor Degree in Europe accredited in Information Systems by ABET, a North American accreditation agency, recognized as the worldwide leader in assuring quality and stimulating innovation in applied science, computing, engineering, and engineering technologies.

ABET

UNIGIS

NOVA IMS is accredited as a member of UNIGIS, an international network that gathers the best schools in Geographic Information Systems.



A3ES

NOVA IMS programs are accredited by A3ES (Agency for Assessment and Accreditation of Higher Education).



iSchools

NOVA IMS was the 1st Iberian Peninsula institute to join iSchools, an international organization that brings together the leading universities in research and teaching of information science.



EMOS

The Master / Postgraduate Program in Statistical Systems obtained the EMOS (European Master in Official Statistics) accreditation by European Statistical System (ESS).



USGIF

NOVA IMS is the 1st university outside the USA to obtain the GEOINT (Geospatial Intelligence) accreditation by the United States Geospatial Intelligence Foundation (USGIF), the only global organization dedicated to promoting the professional practice of GEOINT and building a community of interest across the industry, academia, and Public Administration.



We are a center of excellence in the areas of Information Management and Data Science.

INFORMATION SYSTEMS

The research will continue focused on IT innovativeness (adoption and use) and value of exponential and impactful technologies (e.g., blockchain, e-participation or IoT).



DATA-DRIVEN MARKETING

Applying theories and tools to have a better understanding of human judgment, decision-making and related processes.



GEO INFORMATICS

Enabling smart and open cities. Building on the expertise and work we have in geospatial data, machine learning and data science.



DATA SCIENCE

Learning from imbalanced data is a frequent and challenging problem, both for researchers and practitioner's (e.g. automatic classification of remote sensed images, deep Learning through Neuroevolution).



MagIC



120

No. of Scientific articles in journals indexed in SCOPUS in 2022

+ 538

No. of Scientific articles in journals indexed in SCOPUS between 2018-2022



1

Researcher included in the prestigious 2021, 2022 and 2023 edition of the “Highly Cited Researchers” by Clarivate Analytics

9

Researchers on the World’s Top 2% Scientists by the University of Stanford



+ 3M€

Volume of Financing associated with new R&D and Capacity Building projects (with Targets)

+ 1.2M€

Volume of Financial Execution of R&D and Capacity Building Projects (without Targets)



+ 38

No. of active R&D and Capacity Building Projects (without Targets)

10

No. of Doctorates Completed (with targets)



Highly Cited Researchers of 2023



NOVA IMS in World’s Top 2% Scientists list





NOVA Analytics Labs

NOVA
business intelligence & analytics lab
powered by NOVA IMS
• BI4All • Microsoft

NOVA
information systems & analytics lab
powered by NOVA IMS

NOVA **innovation & analytics** lab
powered by NOVA IMS

NOVA **data analytics** lab
powered by NOVA IMS

NOVA **health & analytics** lab
powered by NOVA IMS

NOVA **marketing analytics** lab
powered by NOVA IMS

NOVA **center for global health** lab
powered by NOVA IMS

NOVA **data-driven public policy** lab
powered by NOVA IMS

NOVA **urban analytics** lab
powered by NOVA IMS

NOVA
blockchain lab
powered by NOVA IMS

NOVA
geoinformatics & analytics lab
powered by NOVA IMS

Application and Enrollment

Important Information

The Board of NOVA IMS have determined a numerus clausus of 60 students per semester for mobility students. The selection criteria will be first come, first served.

Important Deadlines

Fall semester or whole Academic Year

Nominations: from March 15th to May 31st
Applications and student documents: July 1st

Spring Semester

Nominations: from August 1st to November 1st
Applications and student documents: December 1st

After these dates we will not be able to accept further applications.

Nominations

- Partner Universities must send official nomination to NOVA IMS by filling the online Nomination form (preferably). All relevant information with further instruction for the online nomination will be sent via email to our partners in March (for fall semester) and August (for spring semester). Alternatively, Partner Universities can send by e-mail the list of nominated students to NOVA IMS' Erasmus Office: erasmus@novaims.unl.pt;
- NOVA IMS will contact the selected students by e-mail to give them the necessary information and request the documents in order to proceed with the mobility process.

Applications

After being nominated students will be informed about how to access our ONLINE Application Form.

Language Requirements

- Proficiency in English = at least level B1.

All the classes for Mobility students are taught in English. Students must be aware that they need to have solid knowledge of the English language to successfully attend lessons/courses.

Documents Required from the Student

- Learning agreement duly filled in, signed and stamped by the Sending Institution or OLA - Online Learning Agreement (preferably);
- Transcript of records (only English version is accepted);
- Copy of the European Health Insurance Card or for non-European Erasmus exchange students, copy of Health Insurance (English version). These documents must be valid for the whole period of stay;
- Statement of responsibility ([document to be made available by the Erasmus Office of NOVA IMS](#));
- Passport size photo.

Information for Learning Agreements

Please fill in the respective sections of the learning agreement as follows:

The Receiving Institution

Name: Universidade Nova de Lisboa

Faculty/Department: NOVA Information Management School (NOVA IMS)

Erasmus code: P LISBOA03

Address: Campus de Campolide 1070-312 Lisboa

Country: Portugal

Contact person: Ana Sousa / Hugo Caldeira / Catarina Silva

Email: erasmus@novaims.unl.pt

Phone number: +351 213 828 610

Responsible person in the Receiving Institution

Name: Joana Diniz Lino

Function: Erasmus Coordinator

Phone number: +351 213 828 610

Email: jlino@novaims.unl.pt

Please fill in the forms on the computer. We will not accept hand written forms.

The document Transcript of records must be an official document issued by the sending Institution. All parties must sign the Learning Agreement before the start of the mobility. The Learning Agreement must include all the educational components to be carried out by the student at the Receiving Institution.

Students don't need to send or bring hard copies of the documents, unless their home University requires this, or due to the lack of quality of the image of the documents sent.

Erasmus Office will verify all the documents and upon validation of the Erasmus Coordinator we'll send the signed Learning Agreement to the student.

Acceptance Letter

Will only be issued upon request of the student.

Academic Information and Course Registration

Academic Calendar

Semester Dates

Fall Semester

- September 2024 - January 2025
- Lecture Period: September 2024 - December 2024
- Exam Period: January 2025 - February 2025

Spring Semester

- February 2025 - July 2025
- Lecture Period: February 2025 - June 2025
- Exam Period: June 2025 - July 2025

For specific dates please see:

<https://www.novaims.unl.pt/en/education/students/academic-calendar/>

Bachelor Degree

Almost all courses are taught in English.

In every Academic Year, some changes may occur regarding the courses offered in English. However, we do not expect significant changes from one year to the next.

For further information about the courses please see our website:

- Degree in Data Science
www.novaims.unl.pt/lcd
- Degree in Information Management
www.novaims.unl.pt/lgi

- Degree in Information Systems

www.novaims.unl.pt/lsti

Mobility students can choose courses from different programmes and from different years. However, selecting courses from the same programme and year will reduce possible overlaps.

Master Degrees

Almost all courses are taught in English. The study plan should be proposed based on the student's study area and the existing agreement between NOVA IMS and the Sending Institution e.g. Master Programmes held in working hours.

Working Hours Format

- Data Science and Advanced Analytics
www.novaims.unl.pt/mdsaa
- Information Management, with a specialization in Business Intelligence
www.novaims.unl.pt/mgi-gcbi-working-hours
- Information Management, with a specialization in Information Systems Management;
www.novaims.unl.pt/mgi-gsti-working-hours
- Data-Driven Marketing, with a specialization in Marketing Intelligence;
www.novaims.unl.pt/mddm-mi-working-hours
- Data-Driven Marketing, with a specialization in Digital Marketing and Analytics;
<https://www.novaims.unl.pt/mddm-dma-working-hours>
- Data-Driven Marketing, with a specialization in Data Science for Marketing;
www.novaims.unl.pt/mddm-ds4m-working-hours

After Working Hours Format

- European Master in Official Statistics (EMOS)
www.novaims.unl.pt/se-ebc



Limitation or Restriction on Course Registration

- **All the courses have a limited number of vacancies;**
- The list of available courses can change as they are fulfilled on a “first come, first served” basis;
- It is not possible for Bachelor’s degree students to enrol in Master Courses;
- Students must attend the NOVA IMS curricular units correspondent to the same cycle of studies that they attend at their Sending University. Master students will only be able to attend undergraduate courses in exceptional cases;
- Due to NOVA IMS’ bachelor course programme structure organization we recommend the attendance of the Spring semester since there are more optional curricular units available;
- There are Curricular Units that may overlap. To try to reduce possible overlaps we strongly recommended:
 - **Preferably** - Always choose curricular units from the same course/year (no risk of overlapping schedules);
 - **Other Option** - Choose curricular units of the same course and from 1st and 2nd year or from 2nd and 3rd year (moderate risk of overlapping schedules).
- Some courses that need previous knowledge of statistics / econometrics or computing / programming are conditioned.
 - **100101** - Artificial Intelligence
 - **100146** - Computational Methods for Optimization
 - **200142** - Computational Intelligence for Optimization
 - **100027** - Computation II
 - **100029** - Computation III
- Elective curricular units will only be taught if there is a minimum number of students enrolled. Confirmation can only be given during the enrolment period.
- Curricular Units in which Erasmus students cannot enrol:
 - **100063** - Information Systems Project Management
 - **100231** - Business Law
 - **100088** - Project of Information Systems
 - **100048** - Informatics and Information Law
 - **100134** - Digital Innovation Projects
 - **100144** - Information Systems Project II
 - **100149** - Smart and Sustainable Cities

For **Bachelor Degree Students** the total sum of ECTS credits for the curricular units to be selected, cannot exceed 45 (in the case of one semester) or 90 (in the case of an academic year).

For **Master Degree Students** the total sum of ECTS credits for the curricular units to be selected, cannot exceed 37,5 (in the case of one semester) or 75 (in the case of an academic year).

Trimester/Semester Courses

Trimester courses (quarterly courses) - those courses take place in half of a semester duration, in the first seven weeks of the semester (1st trimester of the Fall Semester or 3rd trimester of the Spring Semester) or in the last seven weeks of the semester (2nd trimester of the Fall Semester or 4th trimester of the Spring Semester). Those courses usually have 3.5 or 4 ECTS and are assigned to Master Degree Study Plans.

Semester courses - those courses take place during an entire semester, which means during 14 weeks of classes. The academic year is divided in two semesters: Fall Semester (classes from September to December) and Spring Semester (classes from February to June). In the Master Degree Study Plans, those courses usually have 7.5 ECTS; In the Bachelor Degree Study Plans, semester courses can hold from 2 to 6 ECTS.

Elective Courses

At NOVA IMS, Bachelor Degree Programs comprise 180 ECTS, and Master Degree Programs may comprise 95 or 120 ECTS. Part of those ECTS should be approved as mandatory courses, specific for each program, and the remaining ECTS should be taken as elective courses. The total of ECTS taken as elective courses vary in each program. The students enrol the mandatory courses per semester and select a set of elective courses from a list of available courses (semester or trimester courses) to complete the total ECTS needed. An elective course in a Program can be a mandatory course of another Program or just a course offered as extra. In the latter, the course only takes place if a minimum number of enrolments are registered.

Portuguese Language Courses

It is not possible to attend these courses at NOVA IMS. If the student wants to attend a Portuguese language course, they have to contact, for instance, FCSH, another Faculty of Universidade Nova de Lisboa.

For more information: <http://ple.fcsh.unl.pt/en/start/>.

Welcome Day, Registration and Date of Arrival

Welcome Day

Usually takes place in the week before the beginning of classes. Presence is important but not mandatory.

Registration and Enrolment

NOVA IMS Academic Services will contact students about the necessary procedures. This process only starts after the Learning Agreement has been duly signed by the student and the responsible person from both institutions (sending and receiving).

Date of Arrival

If you do not arrive on our official start date, you must obtain permission from our Erasmus Coordinator. We do not accept students to start our courses if they arrive later than two weeks, after the beginning of the semester.

Changes to the Learning Agreement

Requests for changes to the Learning Agreement must be requested up to 10 days after the beginning of the classes. Any changes to the Learning Agreement should be approved by the Erasmus Coordinator of the Sending Institution and the Erasmus Coordinator of NOVA IMS.

Exams

Please check the calendar of the exams for each curricular unit and all the aspects concerning assiduity (physical presence of students in the classroom) and the evaluation methods carefully.

The Academic Calendar and exam periods (1st and 2nd) are the same for all NOVA IMS students.

You should be aware that if you fail a 1st phase exam you need to do the 2nd phase exam in order to pass (check the exam calendar). Note that there are many curricular units in which there is not a 1st phase exam. In these cases, the 1st phase corresponds to continuous evaluation and, the 2nd phase exam, corresponds to non-continuous evaluation. The non-attendance to an exam does not confer the grade of (0) zero. Students should not make plans to travel home before the end of exams.

Transcript of Academic Records

The Academic Services department only issues the Transcript of Records of the courses of NOVA IMS. This document will be sent to the student after the exchange period. The request needs to be made at the Academic Services of NOVA IMS.

This document certifies that students were evaluated and indicates the grades obtained.

The non-attendance to the exams will not be mentioned in the Transcript of records.

Students can also check their grades on NetP@. The Transcript of Records can only be issued after the end of the 2nd exam period. We will not provide certificates of class attendance. We cannot provide a declaration of school attendance because we do not have that information.

Description of the Institutional Grading system

The result achieved in a course unit, whether through continuous assessment or in an examination, is expressed on a 0 to 20 grading scale.

The lowest passing grade is 10.

ECTS grading scale:

ECTS Scale	% of successful students normally achieving the grade	Definition
A	10	EXCELENT - outstanding performance with only minor errors
B	25	VERY GOOD - above the average standard but with some errors
C	30	GOOD - generally sound work with a number of notable errors
D	25	SATISFACTORY - fair but with significant shortcomings
E	10	SUFFICIENT - performance meets the minimum criteria

ECTS Credits:

1 Full Academic Year = 60 ECTS | 1 Semester = 30 ECTS | 1 Trimester = 20 ECTS

Certificate of Erasmus Student Mobility

Students must request the Declaration of Erasmus Student Mobility indicating the dates of arrival and departure of the student from NOVA IMS at the Erasmus Office NOVA IMS personally. This document cannot be sent by email or regular post, students must come to Erasmus office to get it.

The date of arrival is considered as the day of the Welcome Day or the day, after that, in which the student presents himself at Erasmus Office to begin the mobility period.

The date of departure is considered as the last day in which we contact personally with the student. The date of departure cannot surpass the last day of the 2nd exam period in accordance to the school calendar.

Housing / Accommodation

The application at NOVA Information Management School does not include an offer for a room in a dormitory.

NOVA University of Lisbon has 3 Residence Halls to accommodate students from the 9 existing Faculties:
<https://www.unl.pt/en/life-nova/accommodation>

Priority is given to SASNOVA scholarship students and students on exchange programmes (Erasmus) when allocating accommodation. Although Residence Halls are not managed by NOVA IMS, Exchange / Erasmus students must request accommodation at the Erasmus office of the Faculty they will be studying in. Since there's a limitation of places available for each Faculty, most exchange students have to find a room themselves on the private market.

Please visit:

<https://www.novaims.unl.pt/pt/ensino/alunos/programas-de-mobilidade/erasmus/useful-information/>.

Please notice that the information contained on the websites mentioned are the responsibility of the respective organizations.

Health Insurance

All EU/EEA exchange and freemover students are required to hold and present to NOVA IMS (prior to the semester start) at least a valid copy of the European Health Insurance Card - EHIC, which allows students to benefit from services at any of the public healthcare institutions in Portugal. European Health Insurance Card (EHIC) is not the alternative to travel insurance. Hence, we recommend taking out additional private insurance plan which should fully cover student's stay abroad.

Visa / Entry in Portugal

Applicants from EU/EFTA nations as well as some other nations do not need a visa to study in Portugal.

EU/EFTA nations students who remain in Portugal for longer than 3 months must apply for the Certificado do Registo de Cidadão da União Europeia (CRUE Certificate of Residency).

This certificate must be applied for at their local Council within the 30 days following their first three months in national territory.

Please see: <https://www.sef.pt/en/pages/conteudo-detalhe.aspx?nID=22#div1> and <https://informacoeseservicos.lisboa.pt/en/services/detail/european-union-citizen-registration-certificate> (for Lisbon Council).

Applicants from non-EU nations normally need a visa to study in Portugal. In order to find out if they need a visa and how to apply, they must contact the embassy or consulate of Portugal in their home country. Application processing times can vary greatly depending on volume of applications and the applicant's home country. It is recommended to submit the complete application at least two months prior to the student's departure.

Students of higher education holders of a residence permit issued by a Member State of the European Union and covered by European Union multilateral programmes with mobility measures, or by an agreement between the two or more institutions of higher education, are authorised to entry into national territory to study, provided Portuguese Immigration and Border Service (SEF) is informed until 30 days before the beginning of the mobility period. Communication of the mobility should preferably be done by mail to the institutional mailbox of the delegation or SEF's regional office of the area of the higher educational institution - info.drlvta@sef.pt

Please see: <https://imigrante.sef.pt/en/solicitar/estudar/art91-a/>

If you need a document for Visa purposes, do not hesitate to contact us.

You can find information regarding visas and entry in Portugal at:

- www.portaldascomunidades.mne.pt/pt/
- <https://vistos.mne.gov.pt/en/>
- <https://imigrante.sef.pt/en/solicitar/estudar/>

Students who need to renew their Visa should contact the Erasmus Office as soon as possible, after their arrival.



Life Cost

In the table below, you will find the costs of some daily products as an example to figure out the living costs of Portugal (reference values):

Monthly Expenses

Accommodation (Residences, room rental, hostels, etc) - €300 - €500

Monthly Passes (Navegante Metropolitano) - €40

Living costs (obviously vary per person, depending on your lifestyle and other factors).

Indicative budget average monthly - €550 - €800

Other

Meal at Campus - €3,50 - €5

Cinema - €7,10

Bus Ticket - €2

Metro Ticket - €1,50





For more information about the Erasmus+ programme

Please, check here:



Contacts

Ana Sousa / Hugo Caldeira / Catarina Silva

Erasmus Office

Email: erasmus@novaims.unl.pt

Tel: +351 213 828 610

Appointment Scheduler for Video Call



How to get to NOVA IMS

Carris

701, 713, 716, 726, 742, 746, 756, 758, 770

Metro

São Sebastião (Linha Azul e Linha Vermelha)

Praça de Espanha (Linha Azul)

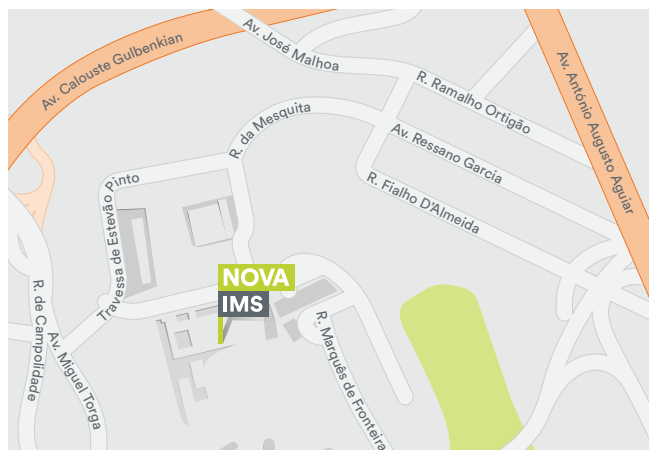
GPS Coordinates

38.732462 | -9.159921

Campus de Campolide, 1070-312 Lisboa, Portugal

Tel: +351 213 828 610 (Call to the national fixed network)

Fax: +351 213 828 611



NOVA IMS Accreditations and Certifications



Cofinanced by

