



OLLSCOIL NA GAILLIMHÉ  
UNIVERSITY OF GALWAY

# Postgraduate Prospectus

2025



University  
ofGalway.ie





# Welcome from the President

Your decision on postgraduate study is an important one. Thank you for considering Ollscoil na Gaillimhe – University of Galway for your future studies. From the day you arrive here, you will be part of a thriving research community where you will be encouraged to fulfil your potential.

**W**e are a global university, committed to outstanding students and staff, working in world-class facilities, conducting leading edge education and research.

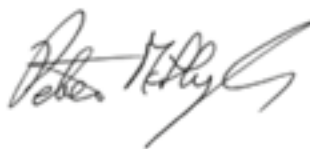
We will be a driver of transformational change for our people, our region and our world, harnessing our distinctive strengths and creative energy to deliver significant and sustainable societal impact.

We want you to be and to feel part of that.

- As a respectful university, we recognise the distinctive needs of our people, and we will support your well-being and development throughout your postgraduate student journey. We respect evidence and expertise, and we will call on you to develop critical thinking and apply rigour to your studies while here.
- From our location on the edge of Europe, our university is open to the world. Ours is a diverse learning community, and we value the dynamism our 3,500 postgraduate students bring to Galway each year from over 90 countries. We work hard to ensure that ours is an accessible and inclusive campus, and during your time here you can expect to engage with a diversity of views and experiences. We are keen collaborators, and you'll see first-hand that our research benefits from insights, partnerships and networks from around the world.

- Together, we are on a journey to become leaders in sustainability. Our university is rooted in the unique culture, communities and landscape of the west of Ireland and our research is focused on many of the world's most pressing challenges, as framed by the UN Sustainable Development Goals. We recognise our important role in shaping the sustainability leaders of the future and we will encourage you to be part of the solution.
- We strive for excellence and impact in what we do. Galway is a global hub for medical technology, data and IT, and a city renowned for culture and creativity. From our location on the Atlantic coast, we have a proud tradition of marine ocean research. We want you to be part of our dynamic university community, learning from world-leading academics, gaining new skills and perspectives, and building a career that will sustain your own passions and excellence into the future.

We are proud to invite you to join our global postgraduate community. I look forward to welcoming you to University of Galway.



**Professor–An tOllamh Peter McHugh**  
Interim President, University of Galway  
Uachtarán Eatramhach, Ollscoil na Gaillimhe

# Why Postgrad?



Increase your salary potential. A postgraduate's starting salary is €6,000–€8,000 more than an undergraduate's. (HEA, 2022)



Develop your existing career by getting on next rung of career ladder.



Gain an accredited qualification for your profession.



Enhance your employability by future proofing your skillset.



Stand out in a competitive graduate job market.



Stand out in the International job market.



Invest in your own personal development.



Change career profession.



## Why University of Galway?

Top 2%



of universities in the  
QS World rankings

Ranked in the

Top 30

most beautiful  
campuses in  
Europe



1st  
in Ireland for  
sustainable  
development

Times Higher Education  
Impact Ranking

Collaborations  
with over



5,000

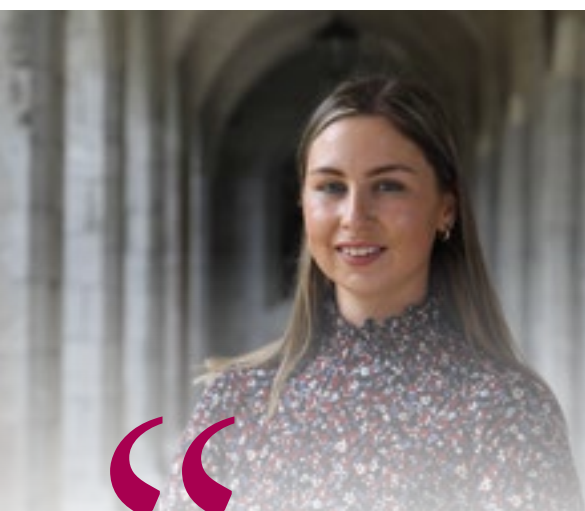
employers across  
all industry areas



Top 5  
in the EU for  
sustainable  
development

Times Higher Education  
Impact Ranking

# Scholarships and Funding



“Securing the postgraduate scholarship was a central turning point in my academic journey, significantly contributing to the successful completion of my MSc in Clinical Research. With the burden of financial constraints lifted, I was able to maximise my potential, excel in my coursework, and develop an understanding of clinical research methodologies and practices. This achievement will undoubtedly stand by me in future career prospects.”

Sarah Flanagan  
Recent University of Galway  
postgraduate scholarship recipient

## €1,500 Postgraduate Excellence Scholarship

At the University of Galway we are keen to ensure that the brightest and most committed students progress to postgraduate study. Our Postgraduate Scholarships are designed to reward excellent students who have performed exceptionally well in their undergraduate studies. Scholarships are worth €1,500 and will be awarded to EU students who:

- Have been accepted onto a full-time taught master's programme commencing September 2025 and
- Have a First Class Honours undergraduate degree
- Have completed a scholarship application.

## Connacht GAA Postgraduate Research Scholarship

Connacht GAA is offering a scholarship to pursue a specialised full-time one-year Masters research degree at the University of Galway commencing in September 2025. The value of the scholarship will fully cover the programme fees of the successful candidate plus an allowance of €500 for research expenses. Progression to PhD studies may be a possibility. In order to be eligible for the award of the scholarship, students must:

- Have completed a Level 8 or higher qualification with minimum overall standard of Honours Grade 2.1 (GPA 3.0).
- Have prior experience of writing reports and research papers is highly desirable, as is having some knowledge about Gaelic games or other comparable sports.

## Our other Postgraduate Funding and Scholarships include:

### Cross-disciplinary awards

- Global Study Awards
- HCI Pillar One Awards
- NUI Awards
- Postgraduate Research Funding
- Scholarships and Funding for Adult Learning and Professional Development
- Sports Scholarships
- Springboard Scheme
- Taught Postgraduate Scholarships

### Business

- J.E. Cairnes School of Business and Economics Scholarships (including MBA Scholarship)

### Health Sciences

- MHS/ PDip Health Sciences (Children's Palliative/Complex Care)

### Humanities and Irish

- Old and Middle Irish Scholarship
- Scoláireacht Mhic Dhonncha (1953–2016)
- Sparánachtaí COGG/MGO
- The Colm Ó hEocha Bursary

## International Scholarships

The University of Galway is committed to attracting talented students from around the world. The university offers a number of partial international scholarships to highly capable international students on a competitive basis.

## Scholarship Finder



# Galway— feel connected





Galway is both a city and a state of mind. Beautifully set on Ireland's western shore, Galway is at once ancient and modern, quiet and lively, reserved and bold. It combines the energy of a young, diverse population with an older, quieter place settled deep in history and tradition.

### **The city that's 'just right'**

If ever there was a city that was not too big, not too small, but just right, it's Galway. Galway has all the advantages of a city, such as easy access to culture, shopping, and entertainment, and few of the disadvantages. This compact city sits on the River Corrib where it enters the sea, with beautiful places to swim, kayak, hike, or birdwatch right on its doorstep. And our campus lies at the edge of the city, with a 10-minute walk taking you to its heart.

Students love the way their university blends with its environment. A university city for over 170 years, Galway welcomes its student population. Safe, friendly, and accessible, this young city is perfect for a student experience like no other.

### **Culture all around**

Galway has culture in its very stones, including drama, music, film, and literature. The university has close links with the Druid Theatre, the annual Film Festival, and the international Cúirt Literature Festival. The Galway International Arts Festival attracts thousands every year, and almost every month has its own festival. So while you're here, why not dip a toe in and sample the culture that's all around.

### **Our wonderful hinterland**

One of the things students love about Galway is its proximity to beautiful beaches, mountains, and islands. Nearby Salthill has a sandy beach and famous diving tower. Further west are the ancient and desolate mountains and lakes of Connemara. The magical Aran Islands are a short boat trip away, and the coastal Wild Atlantic Way can be followed north or south right from the city.

### **Lower cost of living**

The cost of living in Galway is considerably less than in Dublin. Rent prices are 18% more expensive in Dublin city than in Galway city (Source: [www.daft.ie](http://www.daft.ie) 2023 Q4 Rental Report). As the campus is located in the heart of the city and well serviced by bus routes, most students can get to the campus easily on foot, by bicycle, or via public transport.

### **Galway most charming**

If you still need convincing, major international publications have frequently waxed lyrical about the city: the *Lonely Planet* called it 'Ireland's most engaging city', *Travel+Leisure* magazine said it was 'the friendliest city in the world', and the *New York Times* labelled it 'Ireland's most charming city'.

# Employment and Careers

## How will a postgraduate course at University of Galway help your career?

By **enhancing your employability**, enabling you to stand out in a competitive global job market; **future proofing your skillset**, allowing you to seize new opportunities or progress in your existing career; and **increasing your salary potential**. We are one of Ireland's top universities for employability.

**93% of our most recently surveyed postgraduate students** are in employment or further education by the March following graduation.

### Employability and the Postgraduate Return on Investment

Investing in a postgraduate qualification is a wise step in your career path. Recent developments such as fast digitalisation, changing lifestyles, and new consumer preferences mean careers are being rapidly transformed. Focusing on adding to your skillset allows you to capitalise on new career opportunities and increases promotion prospects in your current role. In addition, employers view a postgraduate qualification as a sign of commitment and expertise, making you a more attractive job applicant. And research shows that earning power and career progression greatly increase for postgraduates—they have an average starting salary of €6,000–€8,000 more than an undergraduate. (Source: HEA Graduate Outcome Survey 2022.)

### Career Development Centre Services

Our Career Development Centre team help you discover the right career path for you, develop your knowledge of opportunities and how to connect with employers, prepare applications for the recruitment process, and apply for the best jobs.

**Discover:** We guide your career journey through

- One-to-one career guidance and career seminars and events
- Psychometric testing
- Dedicated careers information hub (on campus and virtual)
- Self-guided career modules

**Develop:** We put you in touch with prospective employers through

- Jobs fairs and employer events
- Jobs vacancy system
- Networking opportunities

**Apply:** We help you compete in the jobs market to the best of your ability through

- CV workshops, e-learning, and unlimited AI feedback via CV Builder tool
- Interview skills workshops, e-learning, and AI mock interview software to practise interview skills
- Applications advice
- Employment skills workshops and Employability Award

**Top employers for recent PG graduates include** HSE, Medtronic, Deloitte, Tusla, Boston Scientific, Glanbia, ESB, Valeo Vision Systems, SAP, AIB.

## 5,000+

Employers across all sectors collaborating with our Career Development Centre

## 150+

Careers events, seminars, and workshops held on campus each year

## 4,000+

1-to-1 appointments with our careers team available each year





# A Global Education

**A**s a postgraduate student at University of Galway, you will have the chance to collaborate and network with fellow students from all over the world, enriching your academic and personal experience.

University of Galway has an academic community of world-leading researchers working at the forefront of their fields. With partner institutions worldwide, University of Galway offers opportunities to collaborate internationally through its postgraduate programmes. As part of your course, you may have the opportunity to travel or be part of a virtual global team.

You will learn with the best—we attract academics who lead in their fields and who are working to address global issues.

**4,000**

**International Students**

**110**

**Countries**

## Entry Requirements

International entry requirements vary by programme. Most of our master's programmes require students to have studied a relevant subject at undergraduate level. Applicants whose first language is not English must submit an English-language qualification test, such as TOEFL or Cambridge. If you need to enhance your language and academic skills, our English Language Centre provides preparatory programmes to help you meet the language requirements. For the most up-to-date information on international entry requirements please visit our website.

## Living in Galway

Living in Galway is affordable compared to other cities in Ireland. As a student, you can immerse yourself in a vibrant campus life with numerous cultural, social, and sporting activities. A stroll to the city centre brings you to lively restaurants, pubs, shops, and entertainment venues.

## Third-Level Graduate Scheme

This programme allows legally resident Irish educated graduates who hold a Level 8 or Level 9 award from a recognised Irish awarding body to remain in Ireland after their studies for a period of up to twenty-four months.

## Immigration Regulations

Students from UK/EU/EEA do not require a visa to study in Ireland. Students holding other nationalities are required to comply with Irish Visa and Immigration regulations. It is your responsibility to ensure that you obtain and maintain a valid passport and relevant permission to enter Ireland for study purposes. For the most up-to-date immigration information please visit our website.



## Find out more

[UniversityofGalway.ie/international](https://www.universityofgalway.ie/international)

e. [international@universityofgalway.ie](mailto:international@universityofgalway.ie)  
t. +353 91 495 277

📷 [@uniofgalway\\_international](https://www.instagram.com/uniofgalway_international)

📺 [@StudyInGalway](https://www.tiktok.com/@StudyInGalway)

📌 [University of Galway International](https://www.facebook.com/UniversityofGalwayInternational)



# College of Arts, Social Sciences and Celtic Studies

At the College of Arts, Social Sciences, and Celtic Studies, we are dedicated to advancing critical thinking, championing creativity, and making a positive impact on the world.

As a leader in teaching and research excellence, deeply embedded in the cultural and intellectual fabric of Galway, we are committed to driving progress and creating a better future for all.

Our postgraduate programmes are designed to push the boundaries of knowledge and foster innovation. Whether your interests lie in the humanities, social sciences, or Celtic studies, you will find a rich academic environment that supports and challenges you. Our faculty are distinguished scholars and dedicated mentors who are passionate about guiding you through your academic journey.

Engaging with our postgraduate community means becoming part of a dynamic network of thinkers and innovators. You will have the opportunity to participate in ground breaking research, contribute to influential projects, and collaborate with peers who share your dedication to excellence. Our programmes not only equip you with advanced knowledge and skills but also prepare you to be a leader in your field, ready to make a significant impact locally and globally.

The vibrant city of Galway, with its unique blend of cultural heritage and modern dynamism, provides the perfect backdrop for your studies. Here, you can immerse yourself in a community that values diversity, fosters creativity, and encourages critical engagement with the world around you.

Join us at the College of Arts, Social Sciences, and Celtic Studies, where your passion and potential will be nurtured and expanded. Together, we can achieve great things, contributing to the intellectual and cultural life of Galway and beyond.

Think, act and live for everyone.

Course Name	Course Type	Contact Email	Duration	Closing Date	Tuition fees, per annum*	
					EU	Non-EU
<b>Acadamh na hOllscolaíochta Gaeilge</b>						
Ateangaireacht Chomhdhála	MA, PDip	ateangaireacht@ollscoilnagailimhe.ie	1 Yr FT	Ar bhonn leanúnach	€7,750	€19,000
Conference Interpreting	MA, PDip	ateangaireacht@ollscoilnagailimhe.ie	1 Yr FT	Ar bhonn leanúnach	€7,750	€19,000
Cleachtas Gairmiúil sna Meáin	MA, PDip	dan.dwyer@ollscoilnagailimhe.ie	1 Yr FT; 2 Yrs PT	Ar bhonn leanúnach	€7,750 MA; €5,250 PDip	€19,500 MA; €13,000 PDip
Gaeilge Fheidhmeach	HDip	eamon.ocofaigh@ollscoilnagailimhe.ie	2 Yrs PT	Ar bhonn leanúnach	€3,750	€13,000
Léann an Aistriúcháin	MA, PgCert	aistriuchain@ollscoilnagailimhe.ie	2 Yrs FT; 1 Yr FT; 1 or 2 Yrs FT	Ar bhonn leanúnach	€4,000 MA; Check website PGCert	€18,000 MA
Léann Teanga	MA, PDip	leannteanga@ollscoilnagailimhe.ie	2 Yrs PT	Ar bhonn leanúnach	€4,000 MA Check website PDip	€18,000 MA
Léann Teanga: Phleanáil Teanga	PgCert	hugh.rowland@ollscoilnagailimhe.ie	1 Yr FT	Ar bhonn leanúnach	€2,500	N/A
Teastas larchéime (Léann an Aistriúcháin)	PgCert	aistriuchain@ollscoilnagailimhe.ie	1 Yr PT; 1 or 2 Yrs PT	Ar bhonn leanúnach	Check website	Check website
<b>College of Arts, Social Sciences, and Celtic Studies</b>						
<b>Burren College of Art (BCA)</b>						
Art and Ecology	MA, MFA, HDip	lisa@burrencollege.ie	1 Yr FT; 2 Yrs FT; 1 Yr FT	1 February 2025	€11,955 MA; €9,500 MFA; €9,500 HDip	€23,460 MA; €18,990 MFA; €18,990 HDip
Fine Art	HDip	lisa@burrencollege.ie	1 Yr FT	1 February 2025	€9,500	€18,990
Fine Art: Studio Art	MA, MFA	lisa@burrencollege.ie	1 Yr FT; 2 Yrs FT	1 February 2025	€11,955 MA; €9,500 MFA	€23,460 MA; €18,990 MFA
<b>School of Education</b>						
Adolescent Health	MSc	education@universityofgalway.ie	1 Yr FT; 2 Yrs PT	Continuous basis	€8,000 FT; €4,000 PT	€19,500
Education (Professional Master of, [Post-Primary])	PME	education@universityofgalway.ie	2 Yrs FT	31 January 2025	€6,500	€18,500
Oideachas (Máistir Gairmiúil san, [Iar-bhunscoil])	MGO	mgo@ollscoilnagailimhe.ie	2 Yrs FT	31 January 2025	€6,500	€18,500
Special Educational Needs	PDip	pdsen@universityofgalway.ie	1 Yr PT	Date determined by the relevant Department of Education Circular issued annually	€2,330	€15,000
<b>School of English, Media and Creative Arts</b>						
Creative Arts Management	PgCert	patrick.lonergan@universityofgalway.ie	1 Yr PT	Continuous basis	€3,895	N/A
Drama and Theatre Studies	MA	ian.walsh@universityofgalway.ie	1 Yr FT; 2 Yrs PT	Continuous basis	€7,750 FT; €4,000 PT	€19,500
English	MA	dermot.burns@universityofgalway.ie	1 Yr FT; 2 Yrs PT	Continuous basis	€7,750 FT; €4,000 PT	€19,000
Film Studies: Theory and Practice	MA	tony.tracy@universityofgalway.ie	1 Yr FT; 2 Yrs PT	Continuous basis	€8,000 FT; €4,000 PT	€19,500
Global Media and Communication	MA	tom.felle@universityofgalway.ie	1 Yr FT	Continuous basis	€10,500	€20,500
Journalism	MA	mei-ling.mcnamara@universityofgalway.ie	1 Yr FT	Continuous basis	€10,500	€20,500
Literature and Publishing	MA	alexandra.peat@universityofgalway.ie	1 Yr FT	Continuous basis	€8,000	€19,500
Public Advocacy and Activism	MA, PDip	fiona.bateman@universityofgalway.ie	1 Yr FT; 2 Yrs PT	Continuous basis	€7,750 FT MA; €4,000 PT MA; Check website PDip	€19,000
Writing	MA	mike.mccormack@universityofgalway.ie	1 Yr FT	Continuous basis	€8,000	€19,500

Course Name	Course Type	Contact Email	Duration	Closing Date	Tuition fees, per annum*	
					EU	Non-EU
<b>School of Geography, Archaeology and Irish Studies</b>						
Coastal and Marine Environments: Physical Processes, Policy and Practice	MSc	liam.m.carr@universityofgalway.ie	1 Yr FT	Continuous basis	€8,000	€19,000
Environment, Society and Development	MA	john.morrissey@universityofgalway.ie	1 Yr FT; 2 Yrs PT	Continuous basis	€7,750 FT; €4,000 PT	€19,000
International Development Practice	MA	una.murray@universityofgalway.ie	1 Yr FT	Continuous basis	€8,000	€19,500
Planning and Development	MA	therese.conway@universityofgalway.ie	1 Yr FT; 2 Yrs PT	Continuous basis	€7,750 FT; €4,000 PT	€19,000
<b>School of History and Philosophy</b>						
History	MA, PDip	helena.condon@universityofgalway.ie	1 Yr FT; 2 Yrs PT	Continuous basis	€7,750 FT MA; €4,000 PT MA; €7,250 FT PDip	€19,000 FT MA
Philosophy	Structured Research Master's	felix.omurchadha@universityofgalway.ie	1 Yr FT; 2 Yrs PT	Continuous basis	€7,750 FT; €4,000 PT	€19,500
<b>School of Languages, Literatures and Cultures</b>						
Classics	Structured Research Master's	michael.clarke@universityofgalway.ie	1 Yr FT; 2 Yrs PT	Continuous basis	€7,750 FT; €4,000 PT	€19,500
French	Structured Research Master's	mary.mannion@universityofgalway.ie	1 Yr FT; 2 Yrs PT	Continuous basis	€7,750 FT; €4,000 PT	€19,500
German	Structured Research Master's	deirdre.byrnes@universityofgalway.ie	1 Yr FT; 2 Yrs PT	Continuous basis	€7,750 FT; €4,000 PT	€19,500
International Contemporary Literatures and Media	MA	tina-karen.pusse@universityofgalway.ie	1 Yr FT; 2 Yrs PT	Continuous basis	€7,750 FT; €4,000 PT	€19,000
Spanish	Structured Research Master's	kate.quinn@universityofgalway.ie	1 Yr FT; 2 Yrs PT	Continuous basis	€7,750 FT; €4,000 PT	€19,000
Translation Studies	MA	mary.mannion@universityofgalway.ie	1 Yr FT	Continuous basis	€7,750	€18,500
<b>School of Political Science and Sociology</b>						
Child, Youth and Community	MA, PDip	danielle.kennan@universityofgalway.ie	1 Yr FT; 2 Yrs PT	Continuous basis	€7,750 FT MA; €4,000 PT MA; €5,250 FT PDip	€19,000 FT MA; €14,500 PDip
Family Support Studies	MA, PDip	carmel.devaney@universityofgalway.ie	2 Yr PT	Continuous basis	€2,250	
Gender, Globalisation and Rights	MA	stacey.scriver@universityofgalway.ie	1 Yr FT; 2 Yrs PT	Continuous basis	€8,500 FT; €4,250 PT	€20,000
Public Policy	MA	Semester 1 niall.odochartaigh@universityofgalway.ie  Semester 2 evans.fanoullis@universityofgalway.ie	1 Yr FT; 2 Yrs PT	Continuous basis	€8,500 FT; €4,250 PT	€19,500
Social Work	MA	socialwork@universityofgalway.ie	2 Yrs FT	31 January 2025	€8,750	€19,500

Course Name	Course Type	Contact Email	Duration	Closing Date	Tuition fees, per annum*	
					EU	Non-EU
<b>School of Psychology</b>						
Applied Behaviour Analysis	MSc	aofemaria.mctiernan@universityofgalway.ie	2 Yr FT	Continuous basis	€8,500	€19,500
Clinical Neuroscience	MSc	ciara.egan@universityofgalway.ie	1 Yr FT	Continuous basis	€8,750	€20,000
Clinical Psychology	DPsychSc	clinicalpsychology@universityofgalway.ie	3 Yrs FT	Check website	Check website	Check website
Clinical Psychology (for Qualified Clinicians)	DPsychSc	clinicalpsychology@universityofgalway.ie brian.mcguire@universityofgalway.ie	3 Yrs PT	Check website	€5,000	€16,500
Health Psychology	MSc	molly.byrne@universityofgalway.ie jenny.mcsharry@universityofgalway.ie gillian.davies@universityofgalway.ie	1 Yr FT; 2 Yrs PT	Continuous basis	€8,500 FT; €4,250 PT	€20,000
Psychology (HDip—Conversion)	HDip	mark.elliott@universityofgalway.ie	1 Yr FT	6 June 2025	€7,250	€18,000
<b>Structured Research Master's in Arts</b>						
Classics	Structured Research Master's	michael.clarke@universityofgalway.ie	1 Yr FT; 2 Yrs PT	Continuous basis	€7,750 FT; €4,000 PT	€19,500
French	Structured Research Master's	mary.mannion@universityofgalway.ie	1 Yr FT; 2 Yrs PT	Continuous basis	€7,750 FT; €4,000 PT	€19,500
German	Structured Research Master's	deirdre.byrnes@universityofgalway.ie	1 Yr FT; 2 Yrs PT	Continuous basis	€7,750 FT; €4,000 PT	€19,500
Philosophy	Structured Research Master's	felix.omurchadha@universityofgalway.ie	1 Yr FT; 2 Yrs PT	Continuous basis	€7,750 FT; €4,000 PT	€19,500
Spanish	Structured Research Master's	kate.quinn@universityofgalway.ie	1 Yr FT; 2 Yrs PT	Continuous basis	€7,750 FT; €4,000 PT	€19,000

- Under 'Closing Date', Continuous basis=this course has no set closing date. Offers are made on a continuous basis.
- Under 'Duration', FT=Full-Time, PT=Part-Time.
- Under 'Non-EU Fees', N/A=Not Applicable.
- Tuition fees per annum are listed here. A student levy (€140 for 2025/26) is also payable.
- Any new courses introduced post-printing of this prospectus will be listed here: [www.universityofgalway.ie/newcourses](http://www.universityofgalway.ie/newcourses).
- Fees quoted are per annum. For course durations greater than 1 year, the continuing years will be subject to a price increase between 2–5% per annum.

\* Fees are correct at the time of going to print, but are subject to change (errors and omissions excepted).

**College of Arts,  
Social Sciences,  
and Celtic Studies**

**An tAcadamh**



# College of Business, Public Policy and Law

This award-winning College comprises three schools: J.E. Cairnes School of Business and Economics, School of Law, and Shannon College of Hotel Management. In the commercial and public policy areas our staff are active in research and leaders in original thinking.

## **J.E. Cairnes School of Business and Economics**

Our globally engaged School of Business and Economics focuses on the public good and transformative impact for students, society and business. We tailor our business postgraduate programmes to the professional skills required to succeed in a competitive international environment. The Association to Advance Collegiate Schools of Business International (AACSB) and the Association of MBAs (AMBA) have accredited the School, and we have received the Athena SWAN Bronze Award. Programmes focus on research-led teaching, innovative approaches, and cutting-edge technologies, while students benefit from industry engagement and a global experience.

## **School of Law**

The School of Law's postgraduate programmes provide access to world-class academics in the School and its three internationally renowned research centres: Irish Centre for Human Rights, Centre for Disability Law and Policy, and Centre for Housing Law, Rights and Policy.

We deliver our taught postgraduate programmes in a stimulating and supportive environment. Students can avail of exciting opportunities for specialised qualifications, and many programmes facilitate international field trips, with some offering prestigious work placements.

## **Shannon College of Hotel Management**

For over 70 years, Shannon College of Hotel Management has delivered unrivalled business education in global hospitality. In the QS Subject Rankings 2023, the University of Galway was ranked among the top 150 institutions worldwide for Hospitality Leisure Management education. Additionally, Shannon College of Hotel Management upheld its position as the number one ranked institution in Ireland for 2023. The school was also awarded the Athena SWAN Bronze Award, reflecting our commitment to advancing gender equality and promoting inclusive working practices.

Course Name	Course Type	Contact Email	Duration	Closing Date	Tuition fees, per annum*	
					EU	Non-EU
<b>J.E. Cairnes School of Business and Economics</b>						
<b>Conversion</b>						
Business Studies	HDip	dbis@universityofgalway.ie breda.lally@universityofgalway.ie	1 Yr FT	Continuous basis	€7,250	€15,000
Financial Analysis	HDip	hcibusiness@universityofgalway.ie natasha.caulfield@universityofgalway.ie	1 Yr FT	Continuous basis	€5,860	N/A
<b>Accounting and Finance</b>						
Accounting	MAcc	accountancy@universityofgalway.ie	1 Yr FT	Continuous basis	€11,500	€20,000
Corporate Finance	MSc	nolanj@universityofgalway.ie accountancy@universityofgalway.ie	1 Yr FT	Continuous basis	€11,500	€21,000
International Accounting and Analytics (Pathway A)	MSc	patricia.martyn@universityofgalway.ie accountancy@universityofgalway.ie	1 Yr FT	Continuous basis	€11,500	€20,500
International Accounting and Analytics (Pathway B)	MSc	patricia.martyn@universityofgalway.ie accountancy@universityofgalway.ie	7 Months	Continuous basis	€7,750	€13,500
<b>Interdisciplinary</b>						
Financial Analysis	HDip	hcibusiness@universityofgalway.ie natasha.caulfield@universityofgalway.ie	1 Yr FT	Continuous basis	€5,860	N/A
Master of Business Administration (MBA)	MBA	orla.naughton@universityofgalway.ie mba@universityofgalway.ie	2 Yrs PT	Continuous basis	€16,000	€18,000
Sustainability Leadership	MSc	martina.sweeney@universityofgalway.ie orla.lenihan@universityofgalway.ie	2 Yrs PT	Continuous basis	€8,750	€13,000
<b>Management</b>						
Entrepreneurship and Venture Management	MSc	management@universityofgalway.ie	1 Yr FT	Continuous basis	€11,500	€21,000
International Management	MSc	management@universityofgalway.ie	1 Yr FT	Continuous basis	€11,500	€21,000
Human Resource Management	MSc	management@universityofgalway.ie	1 Yr FT	Continuous basis	€11,500	€21,000
Management and Sustainability	MSc	management@universityofgalway.ie	1 Yr FT	Continuous basis	€11,500	€20,500
<b>Economics</b>						
Fintech (Economics and Financial Technology)	MSc	feidhlim.mcgowan@universityofgalway.ie economics@universityofgalway.ie	1 Yr FT	Continuous basis	€11,500	€20,500
Global Environmental Economics	MSc	luke.mcgrath@universityofgalway.ie economics@universityofgalway.ie	1 Yr FT; 2 Yrs PT	Continuous basis	€7,750 FT; €4,000 PT	€20,000
Health Economics	MSc	ronan.mahon@universityofgalway.ie economics@universityofgalway.ie	1 Yr FT; 2 Yrs PT	Continuous basis	€8,500 FT; €4,250 PT	€20,000
International Finance	MEconSc	jason.harold@universityofgalway.ie economics@universityofgalway.ie	1 Yr FT	Continuous basis	€11,500	€20,500
<b>Business Information Systems</b>						
Business Analytics	MSc	bis@universityofgalway.ie	1 Yr FT	Continuous basis	€11,500	€21,000
Cybersecurity Risk Management <i>Part-time version of this course is under review, check website for updates.</i>	MSc	bis@universityofgalway.ie	1 Yr FT	Continuous basis	€11,500	€21,000
Information Systems Management	MSc	bis@universityofgalway.ie	1 Yr FT	Continuous basis	€8,500	€21,000
<b>Marketing</b>						
Digital Marketing	MSc	mcsmarketing@universityofgalway.ie	1 Yr FT	Continuous basis	€11,500	€20,500
Marketing Management	MSc	mcsmarketing@universityofgalway.ie	1 Yr FT, 2 Yrs PT	Continuous basis	€11,500 FT; €5,750 PT	€20,500
Marketing Practice	MSc	marketingpractice@universityofgalway.ie	1 Yr FT	Continuous basis	€11,500	€21,000
<b>Shannon College of Hotel Management</b>						
Business and Hospitality	MSc	loraine.kavanagh@universityofgalway.ie	1 Yr FT; 2 Yrs PT	Continuous basis	€10,500 FT; €5,350 PT	€19,000
Global Hospitality Management and Intercultural Communication	MSc	loraine.kavanagh@universityofgalway.ie	1 Yr FT; 2 Yrs PT	Continuous basis	€10,500 FT; €5,350 PT	€19,000
Hospitality and Leadership	PgCert	loraine.kavanagh@universityofgalway.ie	1 Semester	Continuous basis	€4,000	€7,000
Hospitality Management	PgCert	loraine.kavanagh@universityofgalway.ie	1 Semester	Continuous basis	€4,000	€7,000
Hospitality Performance, Revenue and Asset Management	MSc	loraine.kavanagh@universityofgalway.ie	1 Yr FT, 2 Yrs PT	Continuous basis	€10,500 FT; €5,350 PT	€19,000

Course Name	Course Type	Contact Email	Duration	Closing Date	Tuition fees, per annum*	
					EU	Non-EU
<b>School of Law</b>						
Criminology, Criminal Justice and Human Rights	LLM	lawpostgrad@universityofgalway.ie	1 Yr FT; 2 Yrs PT	Continuous basis	€8,500 FT; €4,250 PT	€20,000
International and Comparative Business Law	LLM	lawpostgrad@universityofgalway.ie	1 Yr FT; 2 Yrs PT	Continuous basis	€8,500 FT; €4,250 PT	€20,000
Law and Digital Innovation	LLM	lawpostgrad@universityofgalway.ie	1 Yr FT; 2 Yrs PT	Continuous basis	€8,500 FT; €4,250 PT	€20,000
LLB (Bachelor of Laws)	LLB	lawpostgrad@universityofgalway.ie	2 Yrs FT; 3 Yrs FT; 4 Yrs PT	Continuous basis	€8,000 FT; €7,750 FT; €6,000 PT	€18,500
LLM (General)	LLM	lawpostgrad@universityofgalway.ie	1 Yr FT; 2 Yrs PT	Continuous basis	€8,500 FT; €4,250 PT	€20,000
<b>Centre for Disability Law and Policy</b>						
International and Comparative Disability Law and Policy	LLM	lawpostgrad@universityofgalway.ie	1 Yr FT; 2 Yrs PT	Continuous basis	€8,500 FT; €4,250 PT	€20,000
<b>Irish Centre for Human Rights</b>						
Gender and Human Rights Law	LLM	lawpostgrad@universityofgalway.ie	1 Yr FT; 2 Yrs PT	Continuous basis	€8,500 FT; €4,250 PT	€20,000
International Criminal Law	LLM	lawpostgrad@universityofgalway.ie	1 Yr FT; 2 Yrs PT	Continuous basis	€8,500 FT; €4,250 PT	€20,000
International Human Rights	LLM	lawpostgrad@universityofgalway.ie	1 Yr FT; 2 Yrs PT	Continuous basis	€8,500 FT; €4,250 PT	€20,000
International Migration and Refugee Law and Policy	LLM	lawpostgrad@universityofgalway.ie	1 Yr FT; 2 Yrs PT	Continuous basis	€8,500 FT; €4,250 PT	€20,000
Peace Operations, Humanitarian Law and Conflict	LLM	lawpostgrad@universityofgalway.ie	1 Yr FT; 2 Yrs PT	Continuous basis	€8,500 FT; €4,250 PT	€20,000
Transitional Justice, Human Rights and Conflict	LLM	lawpostgrad@universityofgalway.ie	1 Yr FT; 2 Yrs PT	Continuous basis	€8,500 FT; €4,250 PT	€20,000

- Under 'Closing Date,' Continuous basis=this course has no set closing date. Offers are made on a continuous basis.
- Under 'Duration,' FT=Full-Time, PT=Part-Time.
- Under 'Non-EU Fees,' N/A=Not Applicable.
- Tuition fees per annum are listed here. A student levy (€140 for 2025/26) is also payable.
- Any new courses introduced post-printing of this prospectus will be listed here: [www.universityofgalway.ie/newcourses](http://www.universityofgalway.ie/newcourses).
- Fees quoted are per annum. For course durations greater than 1 year, the continuing years will be subject to a price increase between 2-5% per annum.

\* Fees are correct at the time of going to print, but are subject to change (errors and omissions excepted).

#### Course Finder





# College of Medicine, Nursing and Health Sciences

The College of Medicine, Nursing and Health Sciences is a modern and distinguished College comprising three Schools.

The College has a broad offering of unique and renowned postgraduate programmes, with over 40 options to enable you to enhance your specialisms and advance your career. We have one of Ireland's largest portfolios of postgraduate programmes, and they are open to applicants from various backgrounds.

The College has a vibrant research community with strategic research priorities that respond to the needs of some of the greatest health challenges facing society and the economy globally, including age-related conditions, cancer, chronic diseases, infection, and mental health.

There is a strong focus at the College on putting the patient at the centre of all health and social care research and education, with a belief that patients and the public bring an authentic perspective to our research.

In 2023 University of Galway launched Ireland's first Institute for Clinical Trials. It seeks to transform the clinical research landscape in Ireland by creating a comprehensive end-to-end programme supporting the development and delivery of clinical trials. It will create an environment where scientific advances are translated into improved care for patients. It will transform lives by ensuring patients get access to the latest medicines and treatments

in a timely way. The Institute has an ambitious programme of research excellence which will build on existing experience along with its partnership with the Saolta Hospital Group.

The Institute will consolidate resources, grow our expertise and will positively impact patient health and outcomes. The institute also plans to develop partnerships with industry to further position Galway as the MedTech centre of Ireland, contributing to future economic growth and regional development. It will position Ireland at the forefront of clinical and biomedical discovery.

Postgraduate teaching spans several locations with the latest modern facilities, including the following:

- newly opened Human Biology Building
- modern, purpose-built Nursing and Health Sciences facility
- Biosciences Building
- Clinical Science Institute at Galway University Hospital
- Lambe Institute for Translational Medicine
- HRB Clinical Research Facility.

This allows for integrated research, innovation, and teaching, and creates a culture of collaboration with patient care at the core. Our historical close partnership with the Saolta creates many opportunities for students, including device development, clinical discovery, and practice and application.

Our postgraduate programmes are delivered by research-active international leaders and our curricula are developed in response to the growing need for advanced education, research, clinical practice, and training.

Course Name	Course Type	Contact Email	Duration	Closing Date	Tuition fees, per annum*	
					EU	Non-EU
<b>School of Health Sciences</b>						
Advanced Healthcare Practice and Research	MSc	ruth.mcmenamin@universityofgalway.ie	1 Yr FT; 2 Yrs PT	31 July 2025	€8,500 FT; €4,250 PT	€18,000
Applied Multilingualism	MSc	stanislava.antonijevic@universityofgalway.ie	1 Yr FT; 2 Yrs PT	Continuous basis	€8,250 FT; €4,500 PT	€17,500
Childhood Speech, Language and Communication Needs	MSc	c.carroll@universityofgalway.ie marypat.omalley@universityofgalway.ie	1 Yr FT; 2 Yrs PT	15 August 2025	€8,250 FT; €4,250 PT	€17,500
Health Promotion	MA, PDip	mary.lavelle@universityofgalway.ie stacey.gibbons@universityofgalway.ie	1 Yr FT	Continuous basis	€7,750 FT MA; €7,250 FT PDip	€19,000 FT MA
Podiatric Medicine (Pre-Registration)	MSc	amanda.walsh@universityofgalway.ie fiona.lowry@universityofgalway.ie	2 Yrs	Continuous basis	€12,500	€23,000
<b>School of Medicine</b>						
Applied Clinical Data Analytics	MSc	clinicaldataanalytics@universityofgalway.ie	1 Yr FT; 2 Yrs PT	Continuous basis	€9,000 FT; €4,500 PT	€23,500 FT
Cellular Manufacturing and Therapy	MSc	cynthia.coleman@universityofgalway.ie	1 Yr FT	Continuous basis	€9,100	€27,000
Cheminformatics and Toxicology	MSc	howard.fearnhead@universityofgalway.ie	1 Yr FT	Continuous basis	€9,100	€27,000
Clinical Education	MHS, PDip	postgradhealth@universityofgalway.ie	1 Yr FT; 1 Yr FT, 2 Yrs PT	Continuous basis	€6,250 FT MHS, PDip; €3,250 PT PDip	€10,000 FT MHS, PDip; €5,000 PT PDip
Clinical Research	MSc	clinicalresearch@universityofgalway.ie	1 Yr FT; 2 Yrs PT	Continuous basis	€9,250 FT; €5,500 PT	€19,500 FT
Exercise Physiology and its Application in Therapy	MSc	ananya.gupta@universityofgalway.ie	1 Yr FT; 2 Yrs PT	Continuous basis	€9,250 FT; €5,000 PT	€18,500 FT
Exercise Physiology and Rehabilitation	MSc	ananya.gupta@universityofgalway.ie	1 Yr FT	Continuous basis	€9,250	€18,500
Healthcare Simulation and Patient Safety	MSc, PDipSc	paul.oconnor@universityofgalway.ie angela.odea@universityofgalway.ie	2 Yrs FT; 1 Yr FT	Continuous basis	€5,850 MSc, PDipSc	€9,750 MSc, PDipSc
Interventional Cardiovascular Medicine	MSc	kateryna.prykhodko@universityofgalway.ie	1 Yr FT	Continuous basis	€11,000	€22,000
Multidisciplinary Radiology	MSc, PDip	alanna.stanley@universityofgalway.ie	1 Yr FT; 2 Yrs PT	Continuous basis	€9,250 FT MSc; €4,750 PT MSc; €6,250 FT PDip; €3,250 PT PDip	€18,500 FT MSc; €9,250 PT MSc; €12,500 FT PDip; €6,250 PT PDip
Regenerative Medicine	MSc	linda.howard@universityofgalway.ie	1 Yr FT	Continuous basis	€9,100	€27,000
Surgery	MCh	micheal.newell@universityofgalway.ie	1 Yr FT; 2 Yrs PT	Continuous basis	€8,500 FT; €4,250 PT	€17,000 FT; €8,500 PT
<b>Preventive Medicine and Cardiovascular Health Suite</b>						
Cardiac Rehabilitation	PgCert	jennifer.jones@universityofgalway.ie	1 Semester FT	9 December 2025 (for entry Jan 2026)	€3,250	€6,250
Cardiovascular and Pulmonary Rehabilitation	MSc	jennifer.jones@universityofgalway.ie	1 Yr FT	Continuous basis	€9,250	€18,500
Diabetes	MSc	derek.okeeffe@universityofgalway.ie	1 Yr FT; 2 Yrs PT	Continuous basis	€9,250 FT; €4,750 PT	€18,500 FT; €9,250 PT
Diabetes Professional Credit Award	PCA	eva.flynn@universityofgalway.ie	6 Months PT	16 August 2025	€1,250	€2,250
Obesity	MSc	francis.finucane@universityofgalway.ie	1 Yr FT; 2 Yrs PT	Continuous basis	€9,250 FT; €4,750 PT	€18,500 FT; €9,250 PT
Preventive Cardiology	MSc	jennifer.jones@universityofgalway.ie	1 Yr FT	Continuous basis	€9,250	€18,500

Course Name	Course Type	Contact Email	Duration	Closing Date	Tuition fees, per annum*	
					EU	Non-EU
<b>School of Nursing and Midwifery</b>						
Evidence-Based Future Healthcare	MSc	futureevidencemsc@universityofgalway.ie	1 Yr FT; 2 Yrs PT	31 July 2025	€10,000 FT; €5,250 PT	€18,000 FT; €9,500 PT
Nursing: Acute Medicine	MHSc, PDip	sinead.hahessy@universityofgalway.ie	2 Yrs FT; 1 Yr FT	30 June 2025	€7,750 Yr 1; €3,500 Yr 2	€18,000
Midwifery: Advanced Practice Midwifery	MSc, PDip	heather.helen@universityofgalway.ie	2 Yrs PT; 1 Yr FT	Continuous basis	Check website	Check website
Nursing Advanced Practice Nursing	MSc, PDip	lisa.l.glynn@universityofgalway.ie	2 Yrs PT; 1 Yr FT	Continuous basis	Check website	Check website
Nursing: Children's Palliative and Complex Care	MHSc, PDip	claire.quinn@universityofgalway.ie	2 Yrs FT; 1 Yr FT	30 June 2025	€9,250 Yr 1; €4,250 Yr 2	€18,000
Nursing: Diabetes	MHSc, PDipHSc	noreen.kilkenny@universityofgalway.ie	2 Yrs FT; 1 Yr FT	30 June 2025	€7,750 Yr 1; €3,500 Yr 2	€17,500
Nursing: Education	MHSc	brona.mooney@universityofgalway.ie	2 Yrs PT	31 May 2025	€7,500	€18,000
Nursing: Emergency Care	MHSc, PDip	peter.carr@universityofgalway.ie	2 Yrs FT; 1 Yr FT	30 June 2025	€7,750 Yr 1; €3,500 Yr 2	€18,000
Nursing: Gerontology	MHSc, PDip	marcella.kelly@universityofgalway.ie	2 Yrs FT; 1 Yr FT	30 June 2025	€7,750 Yr 1; €3,500 Yr 2	€18,000
Nursing: Intensive Care	MHSc, PDip	ann.sheehan@universityofgalway.ie	2 Yrs FT; 1 Yr FT	30 June 2025	€7,750 Yr 1; €3,500 Yr 2	€18,000
Nursing: Midwifery	HDip	patricia.healy@universityofgalway.ie	80 Weeks	Check website	Check website	Check website
Nursing: Nurse/Midwife Prescribing	PgCert	lisa.l.glynn@universityofgalway.ie	6 Months	Continuous basis	Check website	Check website
Nursing Education	PDip	brona.mooney@universityofgalway.ie	1 Yr FT	31 May 2025	€5,750	€16,000
Nursing: Obesity	MHSc, PDip	francis.finucane@universityofgalway.ie	2 Yrs FT; 1 Yr FT	Continuous basis	€7,750 Yr 1; €3,500 Yr 2	€18,000
Nursing: Oncology and Haematology	MHSc, PDip	maura.dowling@universityofgalway.ie	2 Yrs FT; 1 Yr FT	30 June 2025	€7,750 Yr 1; €3,500 Yr 2	€18,000
Nursing: Perioperative	MHSc, PDip	elaine.e.ohara@universityofgalway.ie	2 Yrs FT; 1 Yr FT	30 June 2025	€7,750 Yr 1; €3,500 Yr 2	€18,000
Nursing: Public Health Nursing	MHSc	nicola.gillmeeley@universityofgalway.ie	Year 1 FT; Year 2 PT	Check website	Check website	Check website
Wound Healing and Tissue Repair	MHSc, PDip	duygu.sezgin@universityofgalway.ie	2 Yrs FT; 1 Yr FT	30 June 2025	€7,750 Yr 1; €3,500 Yr 2	€18,000

- Under 'Closing Date', Continuous basis=this course has no set closing date. Offers are made on a continuous basis.
- Under 'Duration', FT=Full-Time, PT=Part-Time.
- Under 'Non-EU Fees', N/A=Not Applicable.
- Tuition fees per annum are listed here. A student levy (€140 for 2025/26) is also payable.
- Any new courses introduced post-printing of this prospectus will be listed here: [www.universityofgalway.ie/newcourses](http://www.universityofgalway.ie/newcourses).
- Fees quoted are per annum. For course durations greater than 1 year, the continuing years will be subject to a price increase between 2-5% per annum.

\* Fees are correct at the time of going to print, but are subject to change (errors and omissions excepted).

#### Course Finder



# College of Science and Engineering

The College of Science and Engineering at the University of Galway offers an exciting and interdisciplinary blend of research, innovation, and education across the full range of science and engineering areas.

From studying the stars, to how molecules interact, to delivering life-saving medical devices and cleaner energy, our mission is to produce impactful research and innovation, and to provide an excellent student-centred and inclusive educational experience.

Our interdisciplinarity enables a transdisciplinary approach to learning which cultivates expertise that creates, discovers, and is agile and distinct. We strive for excellence in our teaching programmes, so that we are a destination of choice for science and engineering, at all levels.

Our postgraduate programmes are progressive, diverse and research-led. Drawing on the distinctive strengths of our region in areas such as medical technologies, marine ecology,

data/ICT and enabling technologies, we work with business and industry to provide graduates with the skills and knowledge to drive innovation, economic growth and research, and to address global concerns and challenges.

Our programmes empower students to develop critical thinking, employability and leadership, as well as to fulfil their potential as the next generation of change-makers, delivering real societal impact.

Our vision is to support ambition in education, research and innovation; to provide pioneering and competitive programmes, and to drive excellence. We do this through state-of-the-art, research-informed, transdisciplinary curricula that embed sustainability, contemporary evidence-based teaching methods, and interdisciplinary strengths. This empowers our students to achieve career success and to become valuable contributors to society.



Course Name	Course Type	Contact Email	Duration	Closing Date	Tuition fees, per annum*	
					EU	Non-EU
<b>Computer Science and Software Engineering</b>						
Cloud Computing and Software Development	PDip	ICTskills@universityofgalway.ie owen.molloy@universityofgalway.ie	2 Yrs PT	Check website	€3,790	N/A
Computer Science—Adaptive Cybersecurity	MSc	MScCS-ACS@universityofgalway.ie	1 Yr FT	Continuous basis	€8,750	€28,000
Computer Science—Artificial Intelligence	MSc	MScCS-AI@universityofgalway.ie	1 Yr FT	Continuous basis	€8,750	€28,000
Computer Science—Artificial Intelligence (part-time)	MSc	jamal.nasir@universityofgalway.ie	2 Yrs PT	Continuous basis	€3,975	€3,975
Computer Science—Artificial Intelligence for Professionals	PgCert	patrick.mannion@universityofgalway.ie	1 Yr PT	Continuous basis	€5,000	€5,000
Computer Science—Data Analytics	MSc	MScCS-DA@universityofgalway.ie	1 Yr FT	Continuous basis	€8,750	€28,000
Cybersecurity and Software Development	PDip	ICTskills@universityofgalway.ie mamoona.asghar@universityofgalway.ie	2 Yrs PT	Check website	€3,790	N/A
Data Analytics and Visualisation	PDip	adrian.clear@universityofgalway.ie	1 Yr FT	Continuous basis	€6,360	€23,500
Software Design and Development	MSc, MSc (External), HDip	sam.redfern@universityofgalway.ie jawad.manzoor@universityofgalway.ie	2 Yrs FT; 1 Yr FT	Continuous basis	€6,500 MSc, HDip; €7,250 MSc Ext	€18,000 MSc, HDip; €18,000 MSc Ext
<b>Engineering, Physics, and Enabling Technologies</b>						
Astronomical Instrumentation and Technology	MSc	nicholas.devaney@universityofgalway.ie	1 Yr FT	Continuous basis	€8,750	€28,000
Biomedical Engineering (ME)	ME	biomedeng@universityofgalway.ie	9 Months FT	Continuous basis	€6,500	€28,000
Biomedical Engineering (MSc)	MSc	biomedeng@universityofgalway.ie	1 Yr FT	Continuous basis	€8,750	€28,000
Civil Engineering	ME	civilengineering@universityofgalway.ie	9 Months FT	Continuous basis	€6,500	€28,000
Construction Innovation	PDip	jamie.goggins@universityofgalway.ie	1 Yr PT	Continuous basis	€7,750	N/A
Construction Innovation (MSc)	MSc	jamie.goggins@universityofgalway.ie	1 Yr FT; 2 Yrs PT	Continuous basis	€8,750 FT; €4,500 PT	€28,000
Electrical and Electronic Engineering	ME	mary.costello@universityofgalway.ie	9 Months FT	Continuous basis	€6,500	€28,000
Electronic and Computer Engineering	ME	martin.glavin@universityofgalway.ie	9 Months FT	Continuous basis	€6,500	€28,000
Energy Systems Engineering	ME	EnergyEng@universityofgalway.ie	9 Months FT	Continuous basis	€6,500	€28,000
Enterprise Systems	MAppSc	kathryn.cormican@universityofgalway.ie	1 Yr FT	Continuous basis	€8,750	€28,000
Intelligent Robotics (MSc)	MSc	martin.glavin@universityofgalway.ie	1 Yr FT	Continuous basis	€8,750	€28,000
Key Enabling Technologies	Structured Research Master's	gerard.oconnor@universityofgalway.ie	1 Yr FT; 2 Yrs PT	Continuous basis	€8,750 FT; €4,500 PT	€28,000
Mechanical Engineering	ME	eoin.king@universityofgalway.ie	9 Months FT	Continuous basis	€6,500	€28,000
Mechanical Engineering (MSc)	MSc	engineering@universityofgalway.ie	1 Yr FT	Continuous basis	€8,750	€28,000
Medical Electronics and Digital Health (MSc)	MSc	edward.jones@universityofgalway.ie	1 Yr FT	Continuous basis	€8,750	€28,000
Medical Physics	MSc	christoph.kleefeld@universityofgalway.ie	1 Yr FT	Continuous basis	€8,750	€34,000
Modern Methods of Construction	PG Cert	jamie.goggins@universityofgalway.ie	1 Yr PT	Continuous basis	€4,250	N/A
Occupational and Environmental Health and Safety	MSc, HDip	joan.walsh@universityofgalway.ie	1 Yr FT; 2 Yrs PT	Continuous basis	€8,750 FT MSc; €7,250 FT HDip; €4,500 PT MSc	€28,000 FT MSc; €16,000 FT HDip
Occupational Health and Safety Top-Up	MSc	joan.walsh@universityofgalway.ie	1 Yr PT	Continuous basis	€4,500	N/A

Course Name	Course Type	Contact Email	Duration	Closing Date	Tuition fees, per annum*	
					EU	Non-EU
<b>Entrepreneurship and Innovation</b>						
AgInnovation	MSc	walterbernard.carlson@universityofgalway.ie	1 Yr FT	Check website	€8,060	€26,500
BioInnovation	MSc, PDip	info@bioinnovate.ie	10 Months FT	Check website	€8,750 MSc; €3,750 PDip	€28,000 MSc; €8,500 PDip
TechInnovation	MSc	brendan.allen@universityofgalway.ie	1 Yr FT	Continuous basis	€8,750	€28,000
<b>Life and Biomedical Sciences and Chemistry</b>						
Biomedical Science	MSc	mary.niflathartaigh@universityofgalway.ie	1 Yr FT, 2 Yrs FT	Continuous basis	€8,750	€28,000
Biotechnology	MSc	alexandre.demenezes@universityofgalway.ie	1 Yr FT	Continuous basis	€8,750	€28,000
Chemistry Research	Structured Research Master's	andrea.erleben@universityofgalway.ie	1 Yr FT	N/A	€8,750	€28,000
Neuropharmacology	MSc	andrea.kwakowsky@universityofgalway.ie	1 Yr FT	Continuous basis	€8,750	€28,000
Toxicology	MSc	howard.fearnhead@universityofgalway.ie	1 Yr FT	Continuous basis	€8,750	€28,000
<b>Mathematics, Bioinformatics and Computational Genomics</b>						
Biomedical Genomics	MSc	lars.jermin@universityofgalway.ie pilib.obroin@universityofgalway.ie	1 Yr FT; 2 Yrs FT	Continuous basis	€8,750	€28,000
Genomics Data Science	MSc	lars.jermin@universityofgalway.ie pilib.obroin@universityofgalway.ie	1 Yr FT	Continuous basis	€8,750	€28,000
Health Data Science	MSc	MSC.HDS@universityofgalway.ie	1 Yr FT	Continuous basis	€9,000	€27,000
Mathematics	MSc	mark.howard@universityofgalway.ie	1 Yr FT	Continuous basis	€7,750	€19,000
<b>Medical Technology Regulation and Quality Assurance</b>						
Medical Technologies Regulatory Affairs and Quality	Cert	olivia.mcdermott@universityofgalway.ie mary.butler@atu.ie	1 Yr PT	Continuous basis	Check website	Check website
Medical Technologies Regulatory Affairs and Operations	Cert	olivia.mcdermott@universityofgalway.ie mary.butler@atu.ie	1 Yr PT	Continuous basis	Check website	Check website
Medical Technology Regulatory Affairs	MSc	olivia.mcdermott@universityofgalway.ie mary.butler@atu.ie	2 Yrs PT	Continuous basis	Check website	Check website
Medical Technology Regulatory Affairs and Quality	HDip	olivia.mcdermott@universityofgalway.ie mary.butler@atu.ie	2 Yrs PT	Continuous basis	Check website	Check website

Course Name	Course Type	Contact Email	Duration	Closing Date	Tuition fees, per annum*	
					EU	Non-EU
<b>Science of Sustainability</b>						
AgriBiosciences	Structured Research Master's	charles.spillane@universityofgalway.ie galina.brychkova@universityofgalway.ie	1 Yr FT	Continuous basis	€8,750	€27,500
Agrifood Sustainability and Technology	MSc	charles.spillane@universityofgalway.ie	1 Yr FT	Continuous basis	€8,750	€28,000
Biodiversity & Land Use Planning	MSc	gesche.kindermann@universityofgalway.ie	2 Yrs PT; 2-6 Yrs Modular	Continuous basis	€8,750	N/A
Climate Change, Agriculture and Food Security	MSc	charles.spillane@universityofgalway.ie	1 Yr FT	Continuous basis	€8,750	€28,000
Environmental Leadership	MSc	gesche.kindermann@universityofgalway.ie caitrona.carlin@universityofgalway.ie	1 Yr FT	Continuous basis	€8,750	€28,000
Marine & Freshwater Resources: Management	MSc	liam.morrison@universityofgalway.ie tieman.henry@universityofgalway.ie	1 Yr FT	Continuous basis	€8,750	€28,000
Ocean, Atmosphere and Climate	Structured Research Master's	peter.croot@universityofgalway.ie jurgita.ovadnevaite@universityofgalway.ie	1 Yr FT	Continuous basis	€8,750	€28,000
Sustainable Environments	MSc	caitrona.carlin@universityofgalway.ie	1 Yr FT	Continuous basis	€8,750	€28,000
Sustainable Resource Management: Policy & Practice	MSc	caitrona.carlin@universityofgalway.ie	1 Yr FT	Continuous basis	Check website	Check website
Wind Energy	MSc	mecheng@universityofgalway.ie	1 Yr FT	Continuous basis	€8,750	€28,000

- Under 'Closing Date,' Continuous basis=this course has no set closing date. Offers are made on a continuous basis.
- Under 'Duration,' FT=Full-Time, PT=Part-Time.
- Under 'Non-EU Fees,' N/A=Not Applicable.
- Tuition fees per annum are listed here. A student levy (€140 for 2025/26) is also payable.
- Any new courses introduced post-printing of this prospectus will be listed here: [www.universityofgalway.ie/newcourses](http://www.universityofgalway.ie/newcourses).
- Fees quoted are per annum. For course durations greater than 1 year, the continuing years will be subject to a price increase between 2-5% per annum.

\* Fees are correct at the time of going to print, but are subject to change (errors and omissions excepted).

#### Course Finder



# Online and Blended Learning Courses

University of Galway has successfully provided part-time study opportunities for students for over 40 years. With postgraduates today requiring more flexible study options, the university has developed a range of online and blended learning study options. These are in a variety of subject areas and are designed for people who need to fit study around their professional and personal commitments.

The listing below refers to the courses available in each subject area. Check [www.universityofgalway.ie/onlinelearning](http://www.universityofgalway.ie/onlinelearning) for updates. This website also lists other online professional, part-time, and evening courses, with details available from our Centre for Adult Learning and Professional Development.

## Arts, Social Sciences, and Celtic Studies/An tAcadamh

- Adolescent Health, MSc
- Adolescent Health, PgCert
- Child, Youth and Community, MA
- Cleachtas Gairmiúil sna Meáin, MA
- Creative Arts Management, PgCert
- An Ghaeilge Fheidhmeach, Ard-Diplóma
- Léann an Aistriúcháin, MA, Teastas Iarchéime
- Léann Teanga, MA

## Healthcare

- Advanced Healthcare Practice and Research, MSc
- Cardiac Rehabilitation, PgCert
- Cardiovascular and Pulmonary Rehabilitation, MSc
- Childhood Speech, Language, and Communication Needs, MSc
- Clinical Education, Master's, PDip
- Clinical Research, MSc
- Diabetes, MSc
- Diabetes, Professional Credit Award
- Evidence-Based Future Healthcare (MSc)
- Exercise Physiology and its Application in Therapy, MSc, PDip
- Exercise Physiology and Rehabilitation, MSc
- Healthcare Simulation and Patient Safety, MSc, PDip
- Interventional and Cardiovascular Medicine, MSc
- Multidisciplinary Radiology, MSc/PDip
- Obesity, MSc
- Preventive Cardiology, MSc
- Surgery, MCh

## Information Technology

- Computer Science—Artificial Intelligence for Professionals, PgCert
- Computer Science—Artificial Intelligence, MSc (part-time)

## Nursing and Midwifery Studies

- Midwifery, HDip
- Midwifery: Advanced Practice Midwifery, MSc, PDip
- Nurse/Midwife Prescribing, Certificate
- Nursing (Acute Medicine), MHSc, PDip
- Nursing (Advanced Practice Nursing), MSc, PDip
- Nursing (Children's Palliative and Complex Care), MHSc, PDip
- Nursing (Diabetes), MHSc, PDip
- Nursing (Education), PDip
- Nursing (Emergency Care), MHSc, PDip
- Nursing (Gerontology), MHSc, PDip
- Nursing (Intensive Care), MHSc, PDip
- Nursing (Obesity), MHSc, PDip
- Nursing (Oncology and Haematology), MHSc, PDip
- Nursing (Perioperative), MHSc, PDip
- Nursing Education, Master's
- Nursing (Public Health Nursing), MHSc, PDip
- Wound Healing and Tissue Repair, MHSc, PDip

The School of Nursing and Midwifery offers a range of 10-credit modules. These can be undertaken as stand-alone modules (Professional Credit Awards/Micro-credentials) and can provide part credit toward specialist programmes. To discuss these options please contact Dr Duygu Sezgin:

t. +353 91 49 3344

e. [duygu.sezgin@universityofgalway.ie](mailto:duygu.sezgin@universityofgalway.ie)

w. [universityofgalway.ie/pca/pca.html](http://universityofgalway.ie/pca/pca.html)

## Science and Technology

- AgInnovation, MSc
- Biomedical Science, MSc
- Cellular Manufacturing and Therapy, MSc, PDip, PgCert
- Construction Innovation (PDip)
- Medical Technology Regulatory Affairs, MSc





# Conversion Courses

Graduates may be eligible for courses offered through other colleges and can search for programmes across colleges. For example, an Arts graduate could choose to apply to a Law course (e.g., LLB) or a Business course (e.g., HDip [Business Studies]).

The listings here refer to 'interdisciplinary' courses that welcome applicants from various colleges. [www.universityofgalway.ie/conversion](http://www.universityofgalway.ie/conversion)

## Arts, Social Sciences, and Celtic Studies/An tAcadamh

- Applied Behaviour Analysis (MSc)
- Clinical Neuroscience (MSc)
- Fine Art (Post Baccalaureate)
- Journalism (MA)
- Léann an Aistriúcháin (MA)
- Psychology (Full) (HDip)
- Public Advocacy and Activism (MA)

## Business, Public Policy and Law

- Business Analytics (MSc)
- Business Studies (HDip)
- Criminology, Criminal Justice and Human Rights (LLM)
- Cybersecurity Risk Management (MSc)
- Digital Marketing (MSc)
- Financial Analysis (HDip)
- Fintech (Economics and Financial Technology)
- Gender and Human Rights Law (LLM)
- Global Environmental Economics (MSc)
- Health Economics (MSc)
- Human Resource Management (MSc)
- Information Systems Management (MSc)
- International and Comparative Disability Law and Policy (LLM)
- International Human Rights (LLM)
- International Management (MSc)
- International Migration and Refugee Law and Policy (LLM)
- Law and Digital Innovation (LLM)
- LLB (Bachelor of Laws)
- Management and Sustainability (MSc)
- Marketing Management (MSc)
- Master of Business Administration (MBA)
- Peace Operations, Humanitarian Law and Conflict (LLM)
- Transitional Justice, Human Rights and Conflict (LLM)

## Medicine, Nursing and Health Sciences

- Applied Clinical Data Analytics (MSc)
- Cellular Manufacturing and Therapy (MSc, PDip, PgCert)
- Clinical Research (MSc)
- Evidence-Based Future Healthcare (MSc)
- Exercise Physiology and its Application in Therapy (MSc)
- Healthcare Simulation and Patient Safety (MSc)
- Health Promotion (MA/PDip)
- Interventional Cardiovascular Medicine (MSc)
- Regenerative Medicine (MSc)
- Wound Healing and Tissue Repair (MSc)

## Science and Engineering

- AgInnovation (MSc)
- Biodiversity and Land Use Planning (MSc)
- Biomedical Science (MSc)
- Climate Change, Agriculture and Food Security (MSc)
- Computer Science: Artificial Intelligence for Professionals (PgCert)
- Construction Innovation (PDip)
- Enterprise Systems (MAppSc)
- Environmental Leadership (MSc)
- Medical Physics (MSc)
- Medical Technologies Regulatory Affairs and Quality (Certificate)
- Medical Technology Regulatory Affairs (MSc)
- Neuropharmacology (MSc)
- Occupational and Environmental Health and Safety (HDip/MSc)
- Software Design and Development (HDip)
- Software Design and Development (MSc)
- Sustainable Environments (MSc)
- Sustainable Resource Management: Policy and Practice (MSc)
- TechInnovation (MSc)
- Toxicology (MSc)

# Part-time Study Options

University of Galway offers a wide range of part-time courses at various different levels for prospective students.

7 8

## Adult Learning part-time courses

Certificate, Diploma, Degree, Higher Diploma

For over 50 years, the Centre for Adult Learning & Professional Development has been offering a wide variety of professional, part-time and flexible courses in Business and Management, Science and Technology, Arts, Humanities and Social Sciences at Foundation, Certificate, Diploma, Degree, and Masters levels.

If you have had a gap in your education or wish to upskill for employment, we have a part-time, flexible course for you.

Find out more about Adult Learning



8 9

## Postgraduate part-time courses

PG Certificate/Diploma and Masters

The University of Galway is now offering many of its full-time taught postgraduate courses on a part-time basis, in blended or online learning format.

Find out more about Postgraduate part-time



# National Framework of Qualifications (NFQ)



7 8 9

## Micro-credentials

Micro-credentials are small, accredited courses designed to meet the demands of learners, enterprise and organisations. They provide learning opportunities which offer a highly flexible, bite-sized and accessible way of upskilling and reskilling.

Learners may choose to undertake an individual micro-credential or continue on studying, advancing their skills and knowledge over time. Some micro-credentials offer pathways, allowing learners the opportunity to stack micro-credentials into a larger credential or award.

Find out more about  
Micro-credentials



8 9

## Springboard+ and HCI Pillar 1 courses Government funded courses

Springboard+ is a Government initiative offering free and heavily subsidised courses at certificate, degree, and masters level leading to qualifications in areas where there are employment opportunities in the economy. These areas include ICT, engineering, green skills, manufacturing and construction, among many others.

The Human Capital Initiative (HCI) Pillar 1 offers free and discounted full-time courses in areas such as ICT and Data Analytics, Engineering, Manufacturing and Construction. A number of courses are also available that address green skills and climate change. Courses are at graduate and postgraduate diploma level.

Find out more about  
Springboard+



Recognition of  
Prior Learning  
Your Learning Counts

7 8 9

## Recognition of Prior Learning RPL

If you don't meet the specific entry requirements for a part-time course (at any level) but feel you have the relevant knowledge and skills, you can apply for Recognition of Prior Learning (RPL).

RPL is a process by which prior learning is formally valued. It is a means by which prior learning is identified, assessed, and recognised by an educational institution as part of its programmes, courses, and/or modules on the National Framework of Qualifications (NFQ). This makes it possible for an individual to build on learning achieved and to be rewarded for it.

Find out more about  
Recognition of Prior Learning



# Micro-credentials Listing 2024–25

Micro-credential	Delivery	Credits	NFQ Level	Start Date
<b>Agriculture and Food Systems</b>				
Product Development, Validation and Authorisation	Online	5	9	Semester 2
Honey Bee Health (Apiculture)	Blended	5	8	Semester 2
<b>Business, Management and Law</b>				
Energy Management for Organisations	Online	5	8	Semester 1
Finance for Non-Financial Managers	Online	5	8	Semester 1
Lawyering, Technology and Innovation	Blended	5	8	Semester 2
Law and Analytics	Online	5	8	Semester 1
Enterprise Development	Online	5	8	Semester 2
Ethics and Law for Artificial Intelligence	Online	5	9	Semester 2
Responsible Management and Leadership	Online	10	9	Semester 1
Inclusive Businesses, co-created with and for people with communication difficulties	Online	5	9	Semester 1
Project Management	Online	10	8	Semester 2
<b>Creative Arts, Media and Culture</b>				
Scientific Arts: Studying how the brain perceives the world through creative practice	Blended	5	8	Semester 2
<b>Healthcare and Medicine</b>				
Mental Health Promotion	Blended	10	9	Semester 2
Promoting Healthy Behaviours	Blended	10	9	Semester 2
Promoting Health in the Workplace	Blended	10	9	Semester 2
Promoting Youth Health in Educational Settings	Blended	10	9	Semester 2
<b>Healthcare and Medicine — Nursing</b>				
Advanced Wound Care Management	Blended	10	9	Semester 1
Dementia Care: Transforming Practice	Blended	10	9	Semester 2
Clinical Governance: Supporting Safe Practice	Blended	10	9	Semester 2
High Dependency Maternity Care	Blended	10	9	Semester 2
Care of the Child and Family with Palliative / Complex needs	Blended	10	9	Semester 1
Clinical Supervision: Supporting Continuing Professional Development	Blended	10	9	Semester 1
Advanced Research Methods	Blended	10	9	Semester 1
<b>Humanities and Languages</b>				
Próiseas na Pleanála Teanga	Blended	5	7	Semester 1
Próiseas na Pleanála Teanga I	Blended	5	9	Semester 1
Próiseas na Pleanála Teanga II	Blended	5	9	Semester 2
An Anailís Sochttheangeolaíochta I	Blended	5	9	Semester 1
An Anailís Sochttheangeolaíochta II	Blended	5	9	Semester 2
An Caighdeán Oifigiúil	Blended	10	9	Semester 1
Aistriúchán Téacsanna 1	Online	5	9	Semester 1
German for Business I	Online	5	8	Semester 1
Cúlra agus Comhthéacs na Gaeltachta	Blended	5	7	Semester 1

Micro-credential	Delivery	Credits	NFQ Level	Start Date
<b>IT and Computer Science</b>				
Future of Artificial Intelligence	Online	5	9	Semester 2
Data Analysis and Visualisation	Online	5	9	Semester 1
Machine Learning and Natural Language Processing	Online	5	9	Semester 1
Introduction to Artificial Intelligence	Online	5	9	Semester 1
Digital Competences	Online	10	8	Semester 1
Introduction to Programming in Python	Online	5	8	Semester 1
Designing and Building Interactive Online Training	Online	5	8	Semester 2
Societal Impact of Artificial Intelligence	Online	5	9	Semester 2
Quantum Programming	Online	5	8	Semester 1
<b>Science and Engineering</b>				
Green Labs Principles and Practice	Online	10	9	Semester 1
Environmental Management for Organisations	Online	5	8	Semester 2
Human Anatomy and Physiology	Online	5	8	Semester 1
Regulatory Compliance	Online	5	8	Semester 1
Green Hydrogen Technology, Design and Analysis	Online	5	9	Semester 2
Sustainability Measurement: An Introduction to Life Cycle Management and Assessment	Online	5	8	Semester 1
Sustainability Planning in Construction	Blended	10	9	Semester 1
Innovation and Entrepreneurship	Blended	10	9	Semester 2
Digital Construction Technologies	Blended	10	9	Semester 1
Modern Methods of Construction	Blended	10	9	Semester 2
Modern Methods of Construction (PG Cert)	Blended	30	9	Semester 1
Passive House Designer	Blended	10	9	Semester 1
Machine Design	Online	5	8	Semester 2
Automation 1	Online	5	8	Semester 1
Automation 2	Online	5	8	Semester 2
Manufacturing Technology	Online	5	8	Semester 1
Gemstones and the Commercial World	Blended	5	7	Semester 1
Recording Natural Gemstone Properties	Blended	5	7	Semester 2
<b>Social, Behaviour and Welfare</b>				
Consent, Sexual Violence and Harassment: Practitioner Skills and Practice	Blended	10	9	Semester 1 and 2
Psychology of Consumer Behaviour	Online	5	8	Semester 1
<b>Teaching and Education</b>				
School Self-Evaluation: A data-informed approach	Blended	10	9	Semester 1
Digital Literacy and Young People	Online	10	9	Semester 2
Blended Learning and Teaching	Online	10	8	Semester 1

**Note:** Micro-credential courses will only run if enough places are filled. Learners will be notified as soon as possible of any cancellations.

# Research Studies

Our researchers are shaping the future.  
Be inspired; be part of it.

University of Galway is committed to world-class research and creating new knowledge in key areas across engineering, the humanities, medicine, science, and the social sciences.

**Our strategic focus is on five priority areas:**



**Sustaining our planet and people**



**Realising potential through data and enabling technologies**



**Enhancing policy and society**



**Improving health and well-being**



**Enriching creativity and culture**

Thousands of great minds at the university are helping to shape the future through research and discovery. The following sections provide information on the scale of research currently underway at University of Galway. As a postgraduate student, you could be part of this dynamic community. See yourself helping to advance sustainable sources of energy, improve human health through new treatments for diabetes and cancer, change public policies to improve human welfare, or promote the creative industries through research on our culture, language and heritage.

The scope of our research here at University of Galway is far reaching. Join us and help shape a better future.

**Research matters—join us in changing the world.**



# Research Programmes

Research study programmes (e.g., PhD, MD, Research Master's) are available across our four Colleges, in the following subject areas

- Accounting and Finance
- Agribiosciences
- Anaesthesia
- Anatomy
- Applied Behaviour Analysis
- Applied Mathematics
- Archaeology
- Artificial Intelligence
- Bacteriology
- Biochemistry
- Bioinformatics
- Bioinnovate, Bioinnovation
- Biomedical Engineering
- Biomedical Engineering and Regenerative Medicine (BMERM)
- Biostatistics
- Botany/Plant Science
- Business Information Systems
- Business, Public Policy and Law
- Cellular and Molecular Biology
- Celtic Studies/Léann Ceilteach
- Centre for Excellence in Teaching and Learning (CELT)
- Chemistry
- Child and Youth Research
- Children's Studies
- Civil Engineering
- Classics
- Cloud Computing Research
- Commerce
- Computer Science
- Construction Innovation
- Creative Technologies
- Data Science Institute/Insight
- Digital Arts and Humanities
- Digital Health
- Disability Law and Policy
- Drama and Theatre Studies
- Earth and Ocean Sciences
- Economics
- Education
- Electrical and Electronic Engineering
- English
- Environmental Science
- Film Studies
- French
- General Practice
- Geography
- German
- Global Women's Studies
- Health Promotion
- Health Psychology Practice
- Health Sciences
- History
- Hospitality Management
- Hotel Management
- Human Rights
- Industrial Engineering
- International Cultural Studies
- Irish Studies
- Italian
- Journalism, Media and Communication
- Key Enabling Technologies
- Language Science
- Latin American Studies
- Law
- Management
- Marine Sciences
- Marketing
- Mathematics
- Mechanical Engineering
- Medicine
- Medieval Studies
- Microbiology
- Nua-Ghaeilge
- Nursing and Midwifery
- Obstetrics and Gynaecology
- Occupational Health and Hygiene
- Occupational Therapy
- Ocean, Atmosphere and Climate
- Old and Middle Irish
- Paediatrics
- Pathology
- Perception, Cognition and Action
- Pharmacology and Therapeutics
- Philosophy
- Physics
- Physiology
- Plant Agribiosciences
- Podiatric Medicine
- Political Science and Sociology
- Population Health/Health Science Research
- Psychiatry
- Psychology
- Psychology and Health
- Radiology
- REMEDI
- Robotics
- Ryan Institute [Science]
- Sociology and Politics
- Spanish
- Spanish Studies
- Speech and Language Therapy
- Statistics
- Studio Art
- Surgery
- TechInnovation
- Tourism Management
- Women's Studies
- Zoology

Scan the QR code below to see visit Research Programmes website; follow relevant links to see what study options are available in your subject area of interest:



# Hardiman PhD Scholarships

The university's  
Hardiman doctoral  
scholarship scheme  
celebrates 12 years of  
success since the first  
awards in 2011.

The Hardiman Scholarships are funded through a combination of generous university- and college-level funding support. They offer opportunities for suitably qualified students to pursue full-time, fully funded structured PhD studies in one of the four colleges on topics aligned to the five key areas of research in which the university offers leading expertise:

- Enhancing policy and society;
- Enriching creativity and culture;
- Improving health and well-being;
- Realising potential through data and enabling technologies;
- Sustaining our planet and people.

The objective of the Hardiman Scholarships is to attract the best scholars to the University of Galway, with the determining criterion in awarding a Hardiman Scholarship being the quality of the applicant, nationally and internationally. Over the years, including 2024, around 3,000 excellent applicants have applied for a Hardiman Scholarship. This has resulted in the awarding of a prestigious Hardiman PhD Scholarship to 300 high-achieving individuals who have an appetite for the research world and creativity, who thrive on intellectual excitement, and who positively impact and shape the future for all in our society.

Find out more at:  
[universityofgalway.ie/hardiman-scholarships](https://universityofgalway.ie/hardiman-scholarships)

**“The Hardiman Scholarship programme promotes entrepreneurship and fosters an interdisciplinary culture by connecting its scholars from across the university. This helped me in my career as co-founder of a Digital Health start-up. My PhD ensures that I can maintain the highest level of scientific rigour throughout all company endeavours as we develop products for both EU and US markets.”**

**Emma Carr**  
Hardiman Scholarship Recipient



# The Research Application Process

Applying for a research programme at University of Galway is a three-step process:

1. Find a supervisor/PhD project.
2. Review funding and scholarship opportunities.
3. Finally, apply online.

## Step 1: Find a Supervisor/PhD Project

One of the most important parts of choosing a research programme is finding a supervisor who has relevant expertise in your area of interest. You can find potential supervisors and identify the key research interests of our academic staff and researchers by using our online search site: [www.universityofgalway.ie/findasupervisor](http://www.universityofgalway.ie/findasupervisor). Insert a keyword to find a PhD project or supervisor name (see search field box, top right of webpage). For example, inserting the keywords 'artificial intelligence', will return these results (partial screenshot shown, more entries will be displayed online). You can then download/export your results in

different formats (e.g., PDF or Excel). The output file includes details of the research theme and sub-theme of our current research projects. Contacts for each are also listed.

When you find a supervisor who, or a project that, aligns with your research interests, you should make contact with the relevant academic to discuss matters further. They can also advise you on how to apply to become a University of Galway research student.

This search site links to IRIS, University of Galway's Institutional Research Information System, which enables researchers and academic

staff to maintain an up-to-date CV and showcase their research expertise. For example, clicking on the hyperlink under Professor John Breslin's name in the 'Find a supervisor/PhD project' supervisor column (see Fig. 1) will bring you to Professor Breslin's entry in the IRIS database.

This details the researcher's biography, and clicking on the Research tab in this section will give you more important information. Other links to view include Publications (Book Chapters, Peer Reviewed Journals, Conference Papers, and so on) (see Fig. 2).

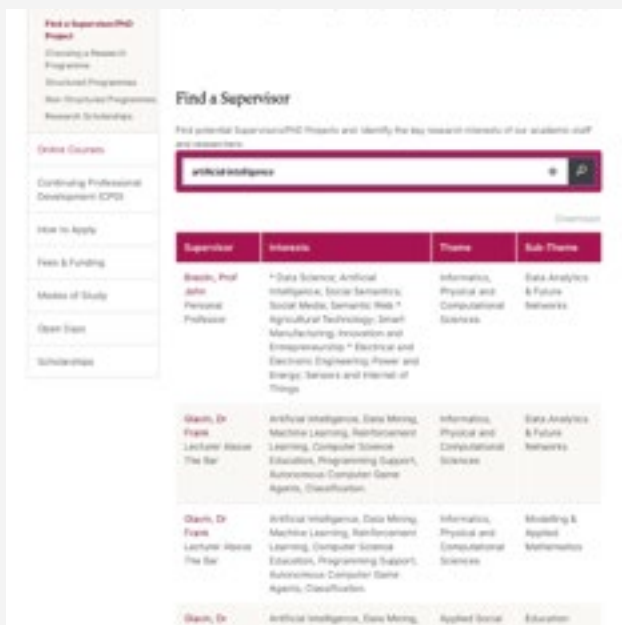


Fig. 1

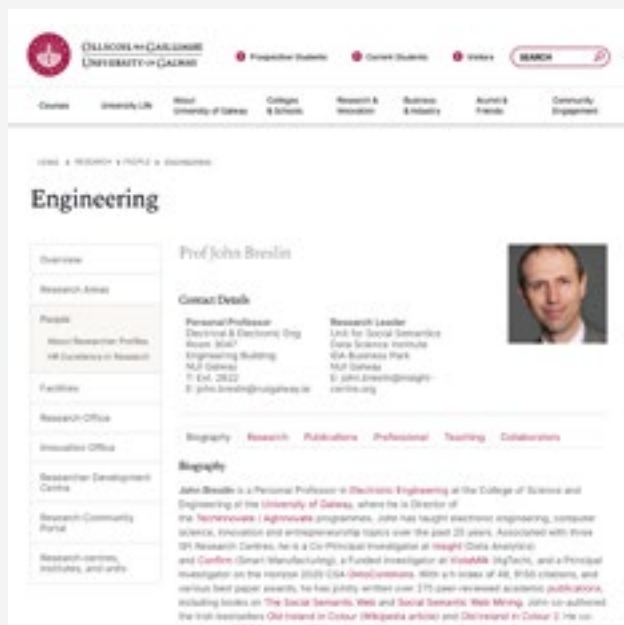


Fig. 2

## Step 2: Funding and Scholarships

See page 32.

## Step 3: Apply Online

The final step in the research application process, once you have found your supervisor and PhD project, and hopefully having secured funding, is to apply online: [www.universityofgalway.ie/apply](http://www.universityofgalway.ie/apply). For further details on how to apply, please see pages 34–35 of this prospectus.

# Research Funding and Scholarships

## External Scholarships

### Irish Research Council (IRC) [www.research.ie](http://www.research.ie)

Provides postgraduate funding to undertake a PhD programme in all disciplines, under the following schemes:

- IRC Government of Ireland Postgraduate Scholarship Scheme: supports suitably qualified research master's and doctoral candidates pursuing or intending to pursue full-time research in any discipline.
- Employment-Based Postgraduate Programme: supports suitably qualified candidates in any discipline working in partnership with academia and industry while employed by an enterprise partner.
- Enterprise Partnership Programme: co-funds awardees to bring great research ideas into an enterprise with the support of a higher education institution.

### Wellcome Trust

<http://wellcome.ac.uk/funding>

This funding scheme supports individuals, teams, resources, seed ideas, places, and major initiatives in these areas: biomedical science, population health, product development and applied research, humanities and social science, public engagement, and creative industries.

### NUI Awards

[www.nui.ie](http://www.nui.ie)

The National University of Ireland makes awards available to postgraduate research students.

### Universities Ireland North/South Scholarship Scheme

[www.universitiesireland.ie/northsouth-postgraduate-scholarships/](http://www.universitiesireland.ie/northsouth-postgraduate-scholarships/)

The aim of this collaborative scheme is to encourage outstanding

students from the Republic of Ireland and Northern Ireland to cross the border to undertake postgraduate study and experience life in the other jurisdiction on the island.

## International Scholarships

University of Galway is ranked in the top 2% of universities globally and is committed to attracting high-calibre students from around the world. To this end, the university offers a range of scholarships to students from a number of countries, in line with our strategic international priorities. Scholarships can vary from year to year, so we recommend you review them on our website for the latest information.

There are a number of external funding sources for international students, and we recommend exploring funding options in your own country. We list below some of the scholarship bodies the university collaborates with, but there are others you may wish to research yourself.

### Irish Fulbright Commission: Fulbright US Student Awards [www.fulbright.ie](http://www.fulbright.ie)

The Fulbright Commission of Ireland awards grants to Irish and EU postgraduate students, scholars, and professionals to study, research, and lecture in the United States, and to US students to do the same in Ireland.

### The George J. Mitchell Scholarships

[www.us-irelandalliance.org](http://www.us-irelandalliance.org)

Mitchell Scholarships are awarded annually to US postgraduate students on the basis of scholarship, leadership, and a sustained commitment to community and public service.

## Examples of Other External Funding Sources for International Students

### Ireland Fellows Programme [www.irishaidfellowships.ie](http://www.irishaidfellowships.ie)

### China Scholarship Council [apply.csc.edu.cn/csc](http://apply.csc.edu.cn/csc)

### Funding for Australian Students: The General Sir John Monash Awards [www.johnmonash.com/applications](http://www.johnmonash.com/applications)

### Education in Ireland [www.educationinireland.com/en](http://www.educationinireland.com/en)

Government agency responsible for promoting Irish education overseas. Lists various funding opportunities for international students studying in Ireland.

## More Funding Bodies

- Paras Education Foundation (TPEF)
- European Union
- Health Research Board
- International Scholarship Resources
- Open Society Foundations
- Research Careers Ireland

## General Information

**[www.revenue.ie](http://www.revenue.ie)**: Information on how income arising from a scholarship is exempt from tax.

**[www.studentfinance.ie](http://www.studentfinance.ie)**: Information on financial support for further and higher education.

**[www.susi.ie](http://www.susi.ie)**: Website for applications for student grants.

# Postgraduate Fees and Funding

## Postgraduate Tuition Fees

Fees quoted are per annum. For course durations greater than 1 year, the continuing years will be subject to a price increase between 2–5% per annum. Please check [www.universityofgalway.ie](http://www.universityofgalway.ie) fees for methods of payment.

---

## International Student Fees

International student fees may be paid in full prior to registration or 50% of fees may be paid before registration\* and the balance paid in full before 31 January 2026.

\*Depending on visa requirements, students may need to pay €6,000 or 50% as part of their visa approval/application.

For more see [www.universityofgalway.ie/student-fees/international](http://www.universityofgalway.ie/student-fees/international)

---

## Deposit—Taught Courses Only

To secure a taught course postgraduate place at University of Galway, a deposit is payable at offer/acceptance stage. The deposit is usually €500 but can be €1,000 for some courses. The deposit payment is deducted from your course fee at registration. If you do not register, then this deposit is not refundable. However, if you did not attain the stipulated conditions of your offer when a conditional offer was originally made, we will refund the deposit, except for the Professional Master of Education and Máistir Gairmiúil san Oideachas programmes.

---

## Grants

Comprehensive information is available at [www.studentfinance.ie](http://www.studentfinance.ie)

Grant applications can also be made online at [www.susi.ie](http://www.susi.ie)

## Tax Relief

Full-time and part-time students can qualify for tax relief on tuition fees. Further information is available at [www.revenue.ie](http://www.revenue.ie).

---

## Funding

Several sources of funding are available to students who meet certain eligibility criteria, including student grants. A comprehensive list is available at [www.studentfinance.ie](http://www.studentfinance.ie). Family and/or personal income is the key assessment when you apply for a grant, but there are other criteria.

---

## Scholarships

See pages 3 and 32 for postgraduate scholarship information or visit [www.universityofgalway.ie/postgraduate\\_scholarships](http://www.universityofgalway.ie/postgraduate_scholarships)

To enhance access and participation opportunities for unemployed and low-income individuals, University of Galway has approved a Scholarship Scheme to reduce fees for applicants receiving Jobseeker's Benefit, Jobseeker's Allowance, Carer's Allowance, One-Parent Family Payment, Disability Allowance, Community Employment Scheme, or Social Insurance Contribution Credits, who wish to enrol for part-time degree, diploma, or master's courses and who meet Department of Social Protection income thresholds.

For more see [www.universityofgalway.ie/adult-learning/information/fees-funding-scholarships/](http://www.universityofgalway.ie/adult-learning/information/fees-funding-scholarships/)

## Government-Funded Initiatives

Springboard began in 2011 as part of the government's Jobs Initiative. It complements the core state-funded education and training system and provides free or 90%-funded upskilling and reskilling higher education opportunities in areas of identified skills need. The ICT skills conversion programme is targeted at jobseekers who hold a Level 8 or equivalent qualification. These can undertake an intensive full- or part-time programme of study and work experience to acquire honours degree-level ICT skills.

The Human Capital Initiative (HCI) Pillar 1 offers free and discounted courses in areas such as ICT and data analytics, engineering, manufacturing, and construction. Courses are at graduate and postgraduate diploma level.

For more see [www.universityofgalway.ie/adult-learning/springboard/](http://www.universityofgalway.ie/adult-learning/springboard/)

---

## Education Loans

The main banks and credit unions offer student education loans, usually with low interest rates and/or deferred repayment terms. Consult their websites for more information.

---

## Micro-credentials

Micro-credentials are new learning opportunities on offer by the University and are short, accredited modules for professional development. A learner subsidy has been applied to many of the Micro-credentials on offer. Funding is currently available at either 50% or 80%, visit [www.universityofgalway.ie/micro-credentials](http://www.universityofgalway.ie/micro-credentials) for further details.

# How to apply

We encourage all applicants to apply as early as possible.

## Online Application

Applications to most postgraduate programmes at University of Galway are made online via [www.universityofgalway.ie/apply](http://www.universityofgalway.ie/apply)

The application system will be open from **1 October 2024** to accept applications for entry to the 2025–26 academic year. Applications are submitted via an online form, and a step-by-step guide will assist you through the process. An application fee will be required, and this is non-refundable. You will require an active email account to use the system.

## Application Fee

An application fee of €35 is payable upon making an application and is non-refundable. Upon completing an application for a course, applicants are provided with a discount code to apply for a second course at no extra charge. Therefore the €35 fee will facilitate up to two course applications.

## Supporting Documents

When making an online application, most programmes require additional documentation to supplement your application, such as an essay, samples of work, a CV, etc. To see what supporting documents, if any, may be required for your programme, please visit: [www.universityofgalway.ie/postgradadmissions/supportingdocuments](http://www.universityofgalway.ie/postgradadmissions/supportingdocuments)

After submitting an application you must then upload the supporting documents.

Your application will not be put forward for review until all the supporting documents have been uploaded and your application status (on your online account) changes to 'Marked Complete'.

## Other Application Routes

A small number of courses have an alternative application system. These alternate routes will be clearly listed on the relevant programme page in this prospectus and in the online course listing at [www.universityofgalway.ie/courses](http://www.universityofgalway.ie/courses)

## When Should I Apply?

Applications are open for entry in 2025 on **1 October 2024**. Please note that University of Galway does not set a deadline for receipt of applications (with some exceptions, see next section). Course quotas will be reviewed at specified times during the application cycle. As many courses fill up quickly, you are advised to apply early. Programmes which reach their quota before these review dates will not accept new applications. You are advised therefore to apply early to avoid disappointment.

Offers will be issued on a continuous basis, with the exception of applications for some programmes which are reviewed after the specified closing date. University of Galway aims to review applications within **10 working days** of receiving a complete application, however application reviews for some programmes may take longer.

Upon review of the application, applicants will receive an update on the decision (normally within four weeks of submitting an application). Candidates who do not have their final degree marks available may be made a conditional (provisional) offer. Applications will continue to be reviewed in the summer months if there are still programme places available.

## Exceptions

A number of programmes have specific deadlines, for example:

- Professional Master of Education (PME) and Máistir Gairmiúil san Oideachas (MGO);
- Doctor of Psychological Science (Clinical Psychology).

**Important:** check individual course websites to see closing date for each: [www.universityofgalway.ie/courses/taught-postgraduate-courses](http://www.universityofgalway.ie/courses/taught-postgraduate-courses)

## Research Applicants

As a research applicant, you are advised, in the first instance prior to submitting an online application, to consult with the academic discipline, school or research centre at University of Galway in which you intend to do your research. At this stage, you should have prepared an outline proposal for submission for the department to consider and support. Before making an application, applicants will be required to find a supervisor (see page 31 for information).

Generally there is no closing date for research applications. However, applications for the PhD degree in the traditional format (i.e., Non-Structured PhD) in the College of Arts, Social Sciences, and Celtic Studies are considered for students commencing their programmes in September and January only. Only applications received before mid-July and mid-November respectively (in the year of study) will meet these commencement requirements.

**Note:** Structured PhD applicants in the College of Arts, Social Sciences, and Celtic Studies must apply by mid-July to commence in September. In a small number of cases, a closing date has been set up for research programme(s)—you are advised, therefore, to check the specific research course.



### Recommendations

We recommend that you apply early in the year (November/December), particularly for programmes that start in the autumn (September/October), especially if you are applying from outside of the European Union (EU) as you will need to apply for a student visa. See page 7 for further information.

You should also allow sufficient time to make any financial, travel and accommodation arrangements when you are offered a place.

### Deposit—Taught Courses

If you are successful in obtaining a taught programme place, you will be obliged to pay a non-refundable deposit (€500 generally; €1,000 for some programmes) to secure your place. This deposit is then deducted from the full course fee. No deposit is required for research programmes.

### English Language Requirement

Applicants from outside of Ireland whose first language is not English must provide evidence that their English-language ability meets the required standard for admission. Please visit [www.universityofgalway.ie/internationalstudents/apply.html](http://www.universityofgalway.ie/internationalstudents/apply.html) to see the list of English language tests we accept. The English language test must have been taken no more than two years prior to the commencement of your course at the University. Please visit [www.universityofgalway.ie/international-students/apply.html](http://www.universityofgalway.ie/international-students/apply.html). For information on testing centres and dates of English-language proficiency tests, see [www.ets.org/toefl](http://www.ets.org/toefl) and [www.ielts.org](http://www.ielts.org)

**Note:** The University of Galway TOEFL institution code is 8861.

### Further Information and FAQs

For more detailed information on making an application, please visit [www.universityofgalway.ie/courses/how-to-apply](http://www.universityofgalway.ie/courses/how-to-apply)

If you are an international applicant, please visit [www.universityofgalway.ie/internationalstudents/apply.html#tab3](http://www.universityofgalway.ie/internationalstudents/apply.html#tab3)

### Garda Vetting/Police Clearance

Some courses require students to provide garda vetting and/or police clearance certificate(s) prior to registration. Such requirements are clearly noted in this prospectus. You can find more details about the University's police clearance policy at [www.universityofgalway.ie/admissions/admissionspoliciesandregulations](http://www.universityofgalway.ie/admissions/admissionspoliciesandregulations)

### Recognition of Prior Learning

The University's Recognition of Prior Learning (RPL) policy may enable learners to gain admission to a programme of study or to gain exemptions from programme modules based on demonstrated learning achieved prior to admission. Some of the programmes of study listed in this prospectus may consider RPL applications. For further information please contact the programme director or visit our RPL website on [www.universityofgalway.ie/rpl](http://www.universityofgalway.ie/rpl)

# Meet Us

## On-Campus Postgraduate Events

If postgraduate study has been on your mind, you won't want to miss our on-campus postgraduate events, where a warm welcome awaits you. Take this great opportunity to:

- meet fellow postgraduate candidates and academic staff
- learn about our wide range of courses
- discover the facilities on our beautiful campus
- find out about admission processes, student support, and funding
- discover scholarship opportunities
- get all the information you need at careers seminars, presentations, and CV clinics.

### Postgraduate Open Evening, November 2024

**What:** This enjoyable evening of informal networking is designed with the working professional or returning learner in mind. If you're thinking of expanding your skillset or moving to another field, this is the ideal chance to get all the information you need. Meet teaching and research staff, as well as like-minded souls who want to grow their career options.

**When:** November 12 2024

**Where:** Bailey Allen Hall

### Postgraduate Open Day, February 2025

**What:** The Open Day is a fantastic opportunity to learn all you need to know about postgraduate study in one easy session. Meet staff and current students, attend a CV clinic, learn about scholarships and funding, and get all the information about the courses you're interested in.

**When:** February 11 2025

**Where:** Bailey Allen Hall

More information, including how to register for each, at: [universityofgalway.ie/postgraduateopenday](https://universityofgalway.ie/postgraduateopenday)

## Other Postgraduate Events

University of Galway also exhibits at other postgraduate events.

To see where you can meet us in 2024–2025, visit: [universityofgalway.ie/postgradevents](https://universityofgalway.ie/postgradevents)

## Dates for Your Diary

### Graduate Jobs Fair:

Wednesday 25 September 2024,  
11am–3pm

### Postgraduate Open Evening:

November 12 2024

### Postgraduate Open Day:

February 11 2025

### Internship and Graduate Jobs Fair:

Wednesday 22 January 2025,  
11am–3pm



## Campus Tours

Why not take a guided tour of our beautiful campus to get your bearings and absorb the atmosphere.

Email to book:  
[campustours@universityofgalway.ie](mailto:campustours@universityofgalway.ie)

If you'd like to meet a particular programme director, please let us know in your email and we'll do our best to arrange this.



**Important:** This hard copy prospectus lists all programmes on offer, at the time of going to press, for entry in 2025. Details of new programmes on offer subsequent to the printing of this prospectus will be listed online at: [www.universityofgalway.ie/newcourses](http://www.universityofgalway.ie/newcourses). The information contained in this prospectus is, to the best of our knowledge, true and accurate at the time of publication. The content of the prospectus is for information purposes only and should not be viewed as the basis of a contract between students and the university.

University of Galway reserves the right to amend programmes or regulations at any time without notice; we may re-open previously closed programmes to accept applications in the event of programme quotas not being met. The university also reserves the right to withdraw programmes periodically for any reason (e.g., insufficient numbers).

The university reserves the right to amend course offerings, syllabuses, course delivery methods, examinations, fees, regulations or rules or substitute modules in response to any circumstances outside of the reasonable control of the university.

*Fáilte Ireland kindly supplied some of the photographs included in this publication.*



OLLSCOIL NA GAILLIMH  
UNIVERSITY OF GALWAY

Your space &  
place to *thrive*.

[universityofgalway.ie/choose-postgrad](https://universityofgalway.ie/choose-postgrad)  
e. [postgrad@universityofgalway.ie](mailto:postgrad@universityofgalway.ie)



University  
ofGalway.ie