

# EDUCATION RE-EXAMINED

## FIRING GANDHI NEURONS

ANANTHA DURAIAPPAH

PRESENTATION AT THE

UNESCO CHILD AND FAMILY RESEARCH CENTER 8<sup>TH</sup> BIENNIAL INTERNATIONAL CONFERENCE

REDISCOVERING EMPATHY: VALUES, RELATIONSHIPS AND PRACTISE IN A CHANGING  
WORLD

NATIONAL UNIVERSITY OF IRELAND, GALWAY

8<sup>TH</sup>-9<sup>TH</sup> JUNE 2017



United Nations  
Educational, Scientific and  
Cultural Organization



Mahatma Gandhi Institute  
of Education for Peace  
and Sustainable Development

# The Present Mindset of our Future generations: Do we have a Problem?



United Nations  
Educational, Scientific and  
Cultural Organization



Mahatma Gandhi Institute  
of Education for Peace  
and Sustainable Development

OBJECT TO  
ALLOWING  
BEEF CONSUMPTION



46%

AGREE THAT WIFE  
SHOULD ALWAYS LISTEN  
TO HUSBANDS



51%

DO NOT APPROVE  
OF LIVE IN  
RELATIONSHIPS



67%

FEEL PEOPLE HAVE  
BECOME LESS  
TOLERANT OF  
OTHER'S VIEWS



53%

OPPOSED TO  
INTER-RELIGIOUS  
MARRIAGES



45%



The CSDS-KAS Youth Survey 2016 was conducted in 19 States of the country among 6,122 respondents in the age group of 15-34 years

# Inside the mind of the young



United Nations  
Educational, Scientific and  
Cultural Organization



Mahatma Gandhi Institute  
of Education for Peace  
and Sustainable Development

15 Cities | 5,000+ respondents | 15-24 years

ONLY SUPERMAN CAN  
NOW SAVE INDIA



50%

LOW ON OPTIMISM AND ON HOPE THAT  
SOMETHING GOOD WILL HAPPEN TO THE  
COUNTRY SOON



64%



The HT-MaRS Youth Survey was conducted in 2016 in India covering 5,200 respondents from 15 states, equally divided among men and women, half of them in the age group of 18-21 and the other half in 22 – 25.

# Results of UNESCO MGIEP's YOUNG Speak survey

1,526 respondents | 126 countries



United Nations  
Educational, Scientific and  
Cultural Organization



Mahatma Gandhi Institute  
of Education for Peace  
and Sustainable Development



No exposure to  
peace education

Moderate exposure to  
peace education

High exposure to  
peace education

No correlation between  
peace education and  
empathy

# Results of UNESCO MGIEP's YOUth Speak survey



United Nations  
Educational, Scientific and  
Cultural Organization



Mahatma Gandhi Institute  
of Education for Peace  
and Sustainable Development



## Some survey statements

1,526 respondents | 126 countries



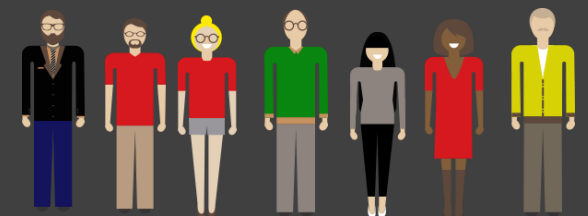
“Some people in this world should have more opportunities than others”

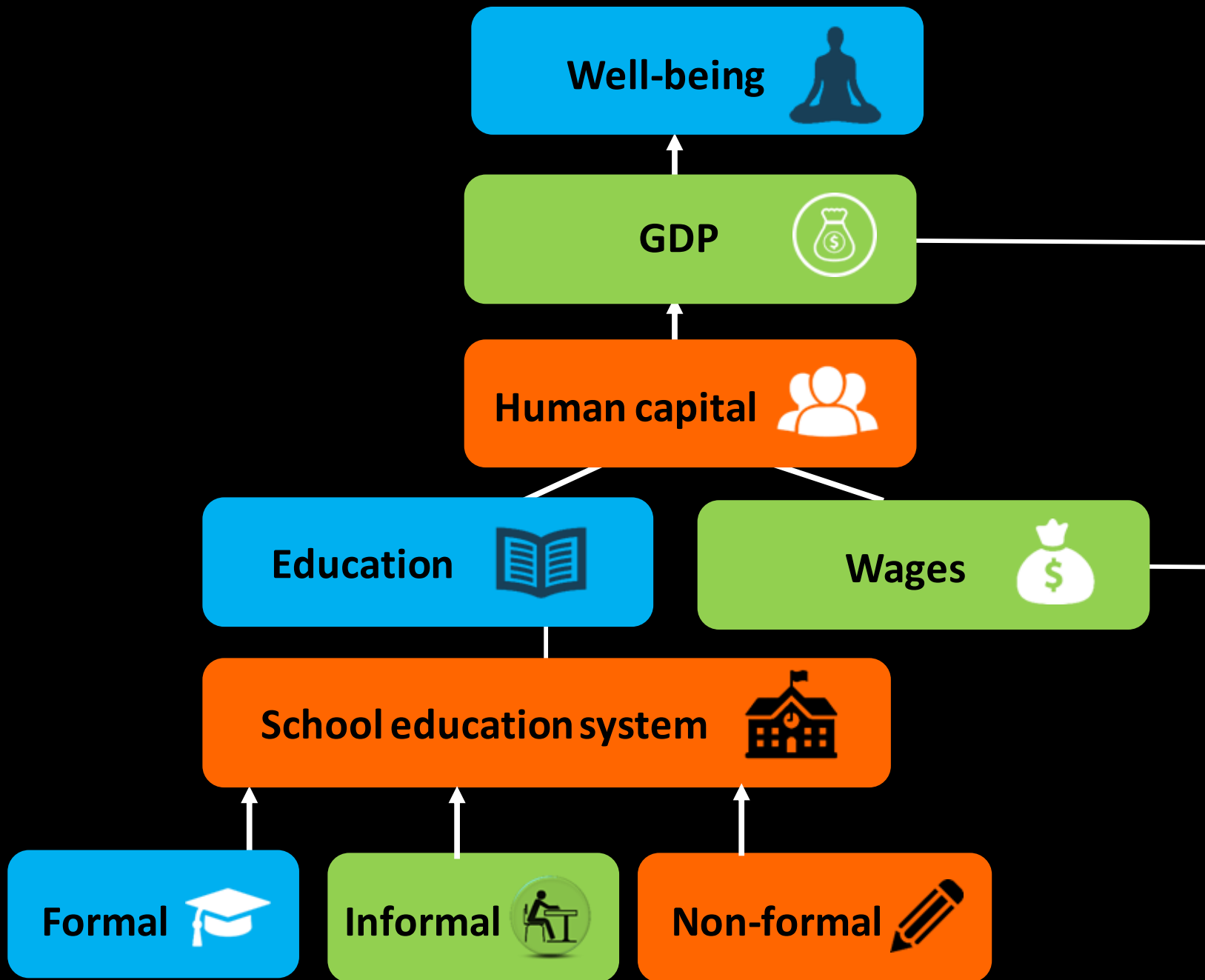


“In times of insecurity (situations of conflict), it is sometimes necessary to use force against others to maintain law and order”



“Fixed gender roles of men and women bring stability to society”





# PRESENT EDUCATION SYSTEM:

WE VALUE WHAT WE MEASURE – AND GDP IS WHAT WE MEASURE AND VALUE!

Driven by a very utilitarian system. Building **Human capital** is key objective and contributes to GDP – We value what we can measure!

Popularized by Gary Becker, an economist from the University of Chicago, Nobel Prize in 1992 refers to the stock of knowledge, habits, social and personality attributes, including creativity, embodied in the ability to perform labor so as to produce economic value.

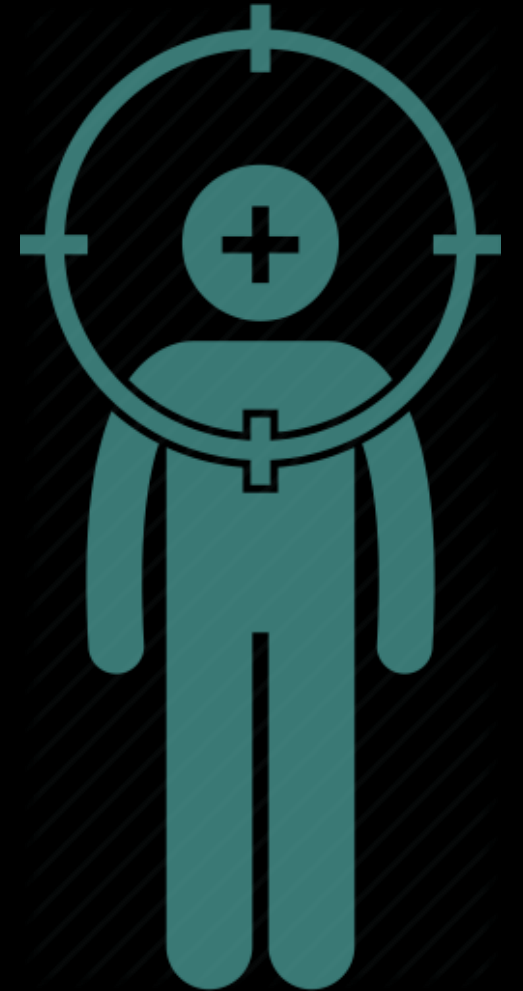
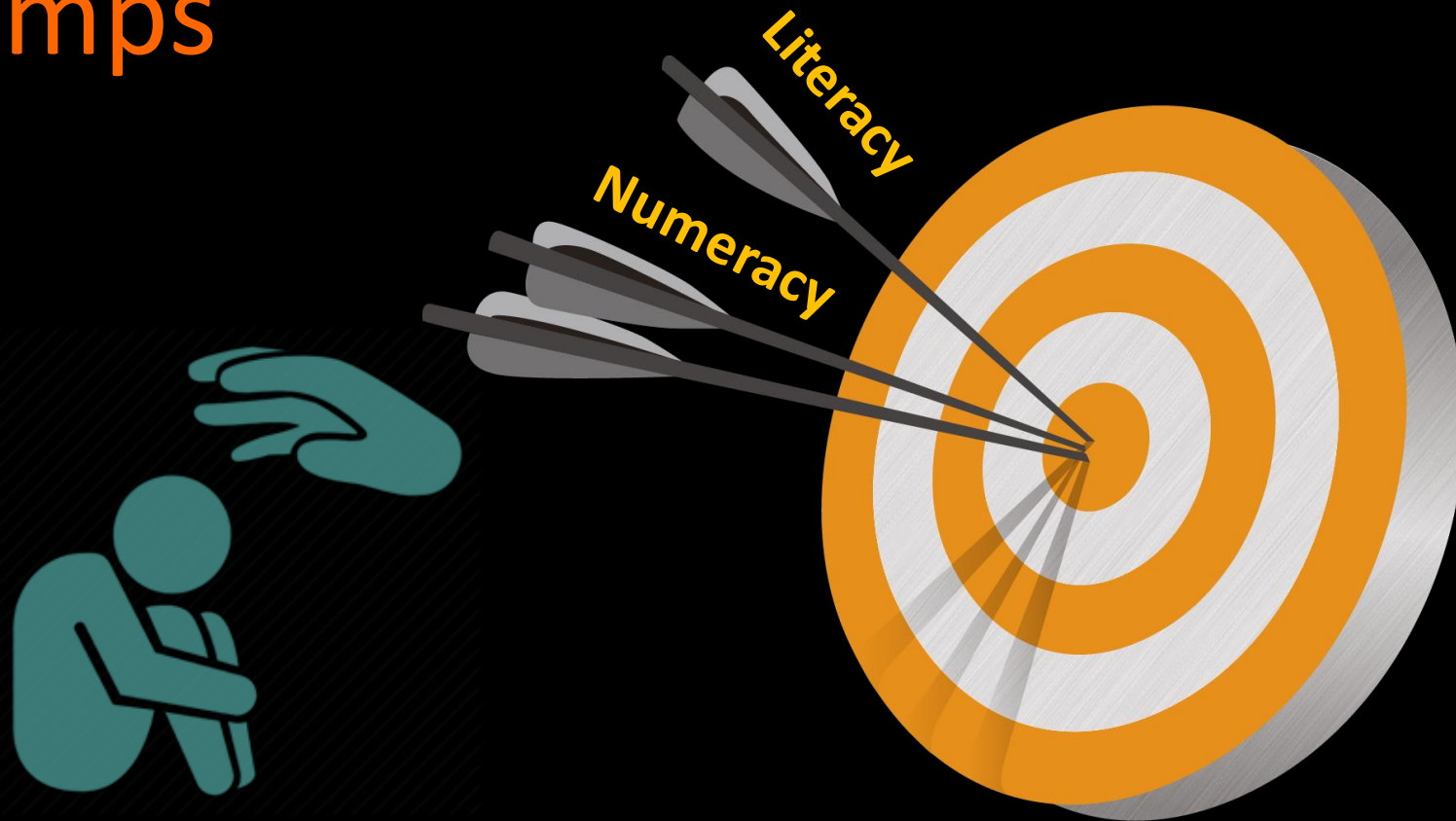
# KEY FEATURES OF PRESENT EDUCATION SYSTEM

- BANKING STYLE EDUCATION
- THE FACTORY STYLE PRODUCTION OF STUDENTS
- THE SELF
- COMPETIVENESS
- DOMINATION





# Are Our Present education systems predator training Camps



# GOOD NEWS

- THE HUMAN BRAIN IS A SOCIAL BRAIN
- HUMANS ARE WIRED FOR EMPATHY
- IRRESPECTIVE OF EXPOSURE TO EDUCATION FOR PEACE ETC, INDIVIDUALS DEMONSTRATED SOME LEVEL OF EMPATHY FOR OTHERS.

# Some Definitions

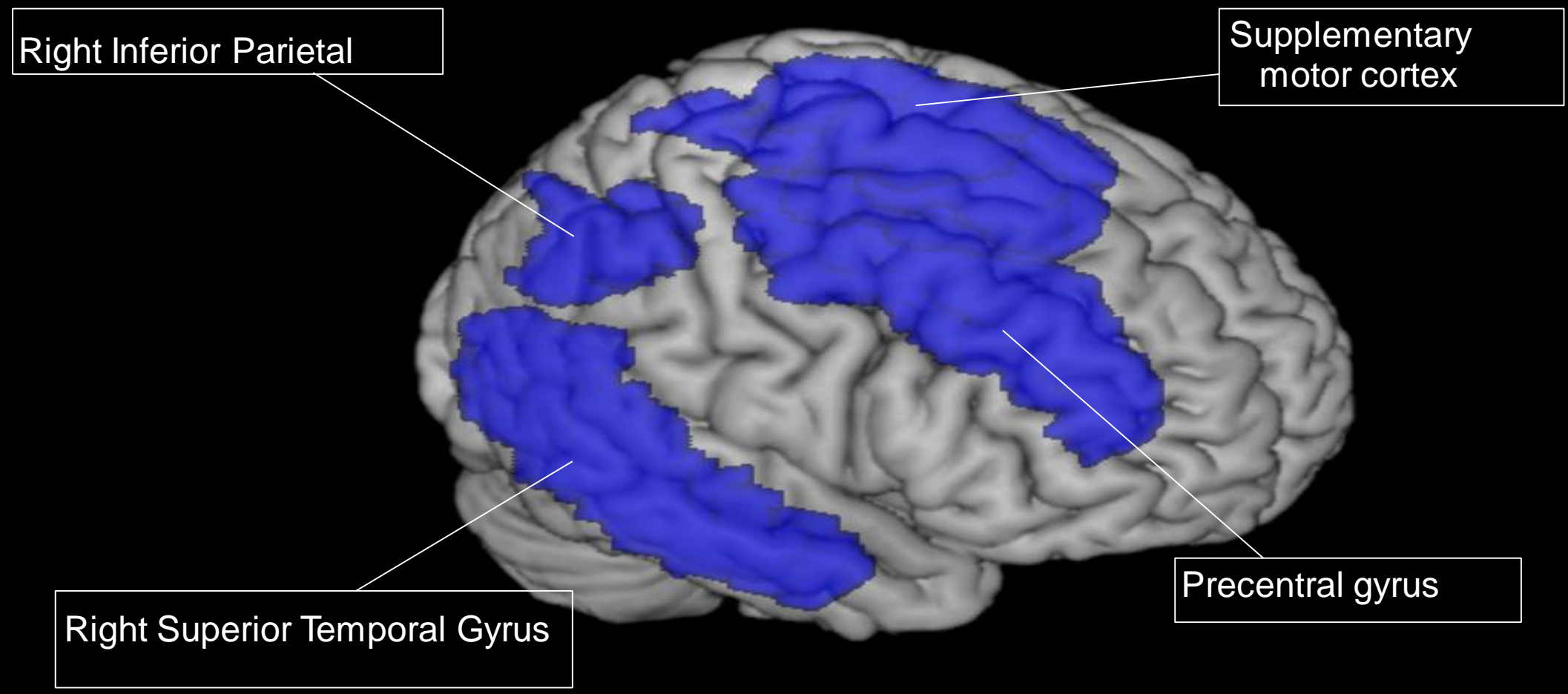
Mindfulness: Paying attention to the now, understanding one's own thoughts and feelings without judging them. UNDERSTANDING ONESELF

Empathy: is the capacity to understand or feel what another person is experiencing from within the other person's frame of reference, i.e., the capacity to place oneself in another's position.  
UNDERSTANDING THE OTHER

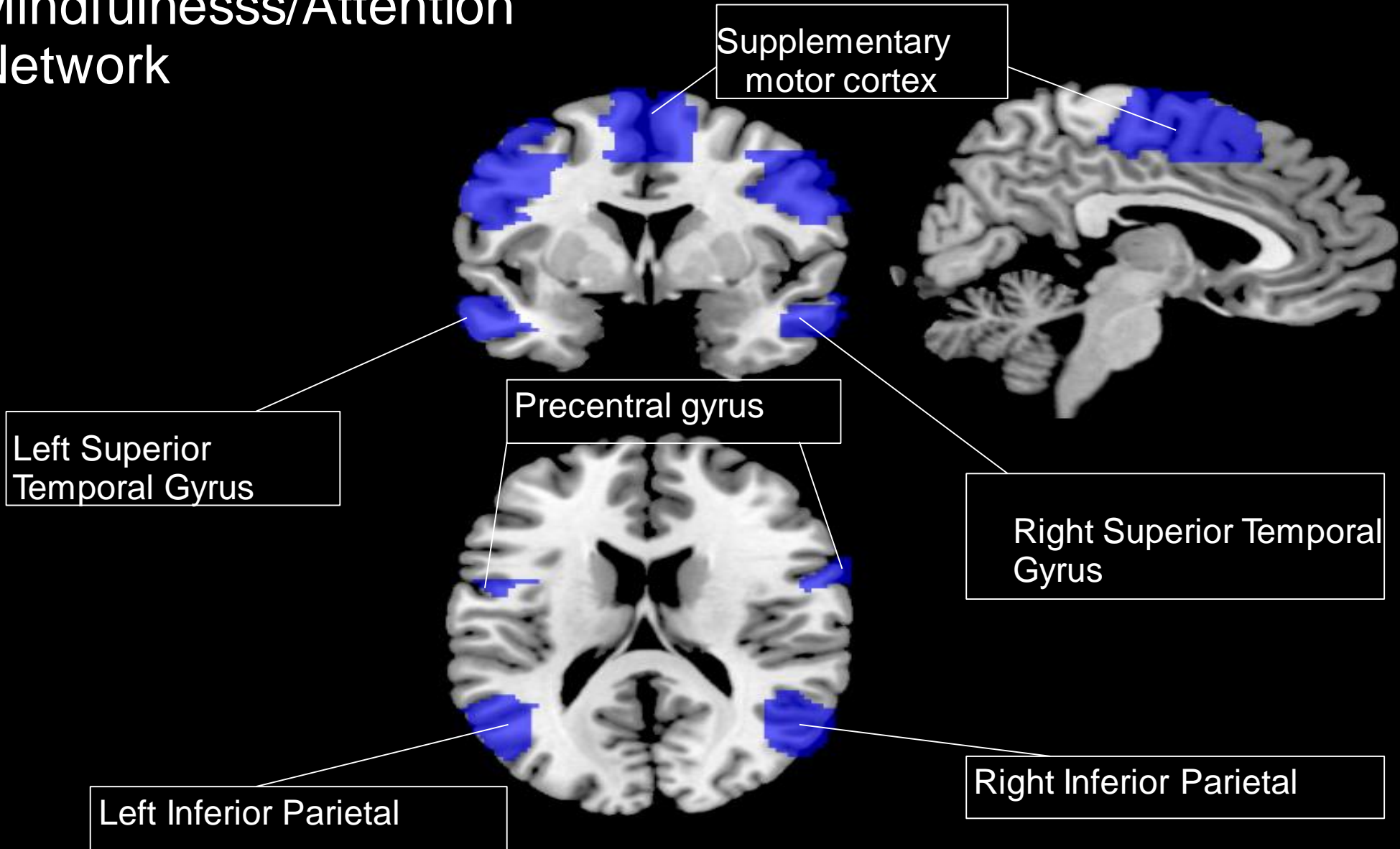
Compassion: Motivates people to go out of their way to help the physical, spiritual, or emotional hurts and pains of another: ACTION – DOING

Critical Inquiry: Process of gathering and evaluating information, ideas, and assumptions from multiple perspectives to produce well-reasoned analysis and understanding, and leading to new ideas, applications and questions. CURIOUS – PROBING -LEARNING

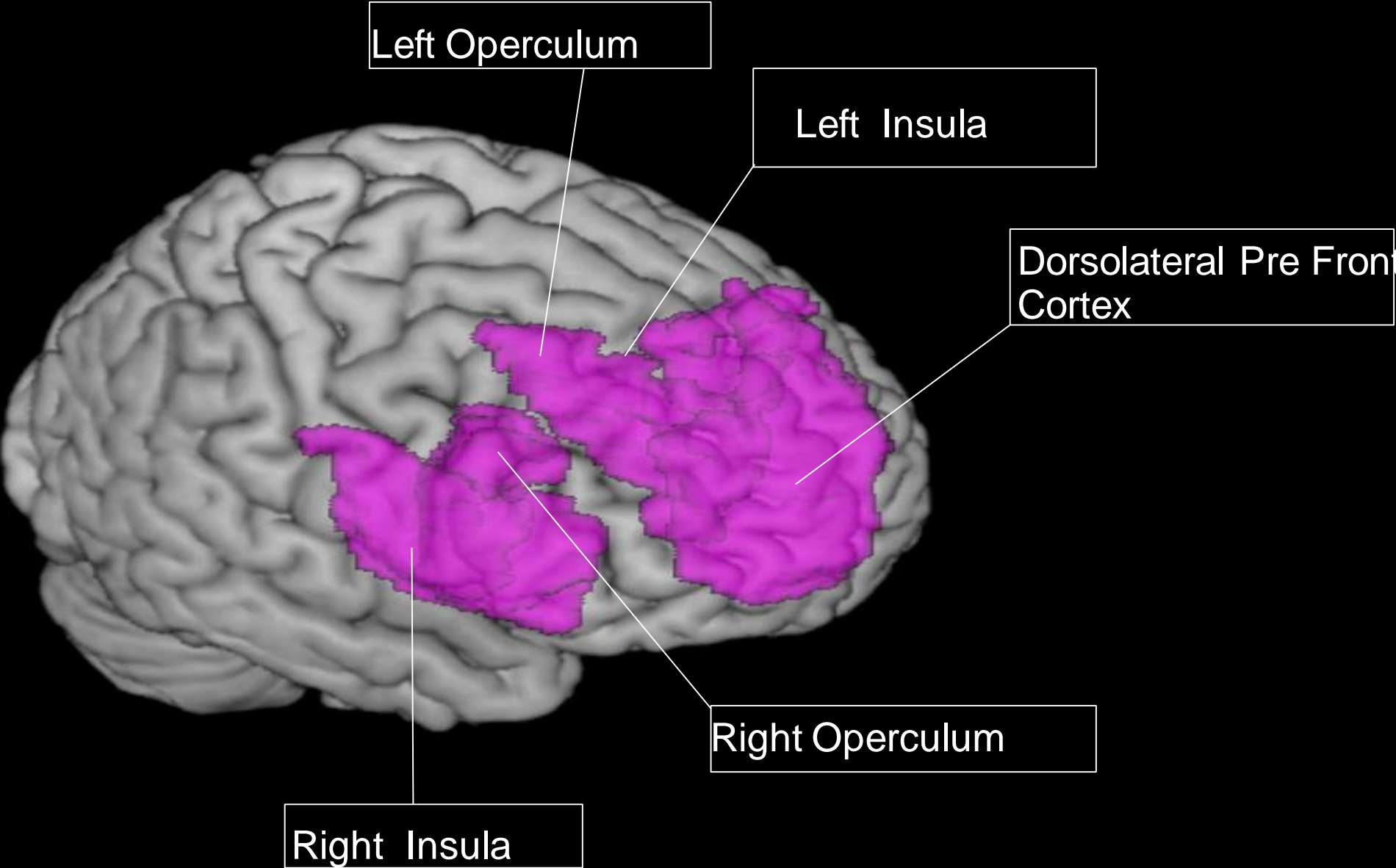
# Mindfulness/Attention Network



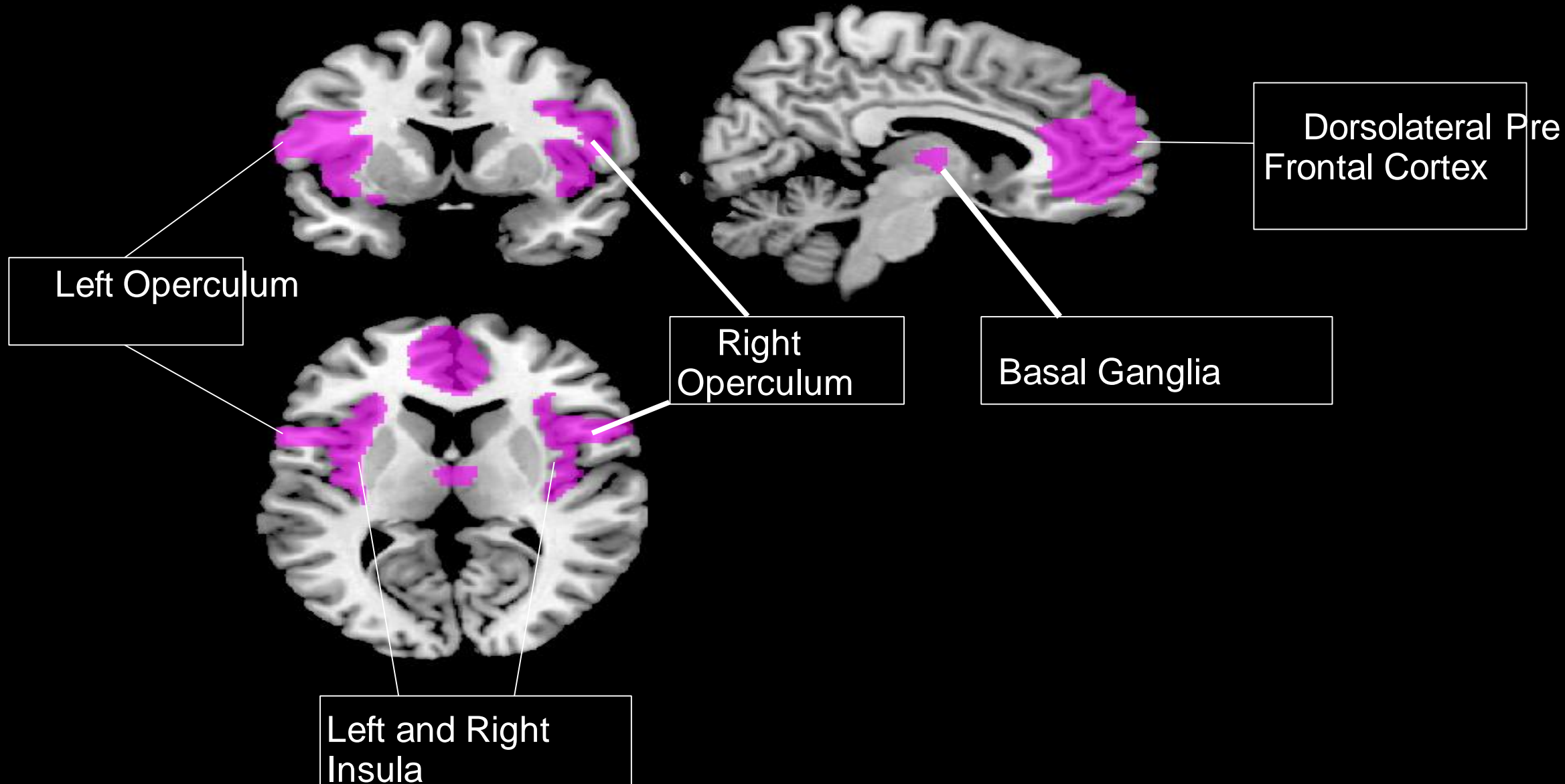
# Mindfulness/Attention Network



# Empathy Network

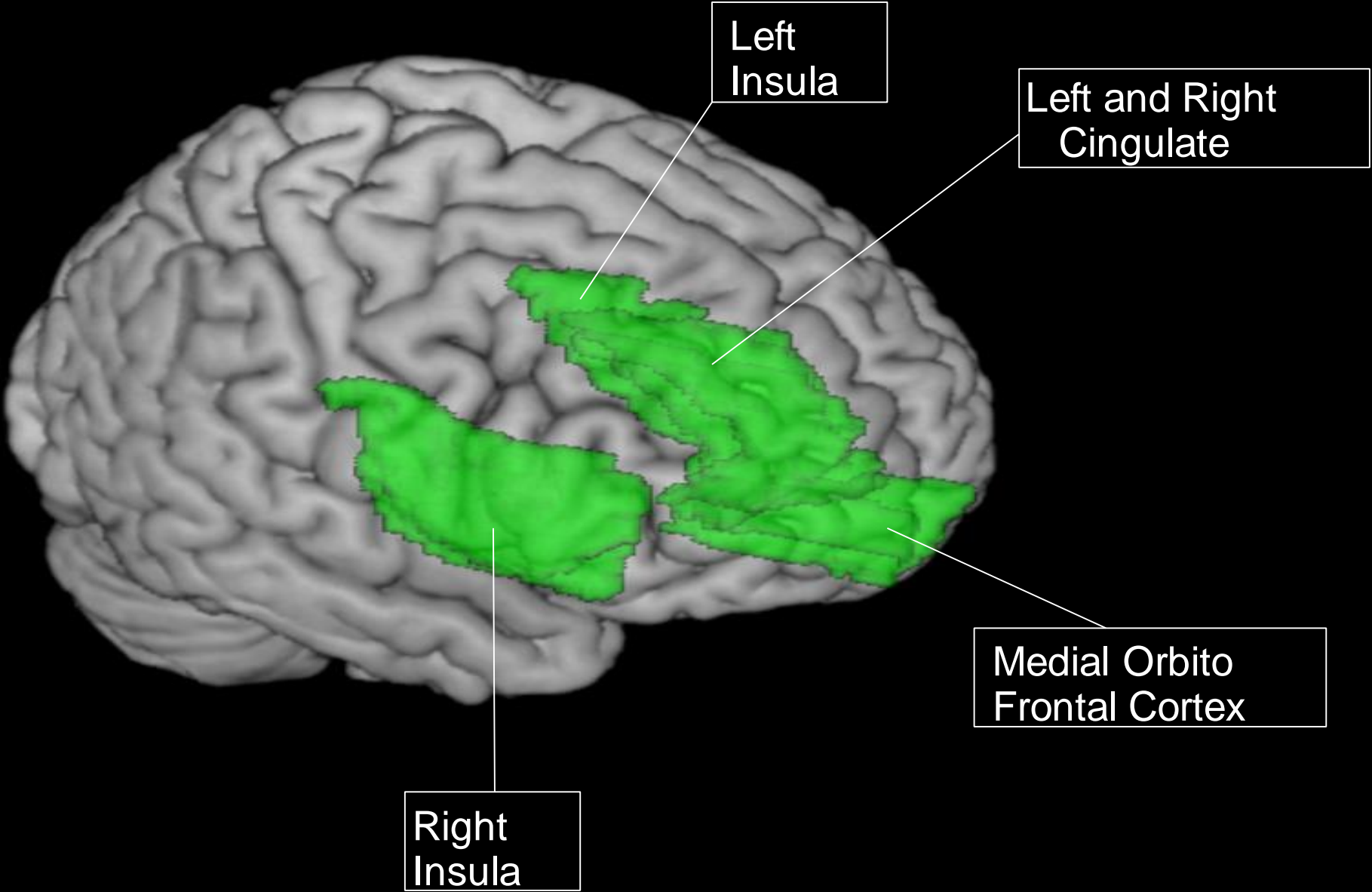


# Empathy Network

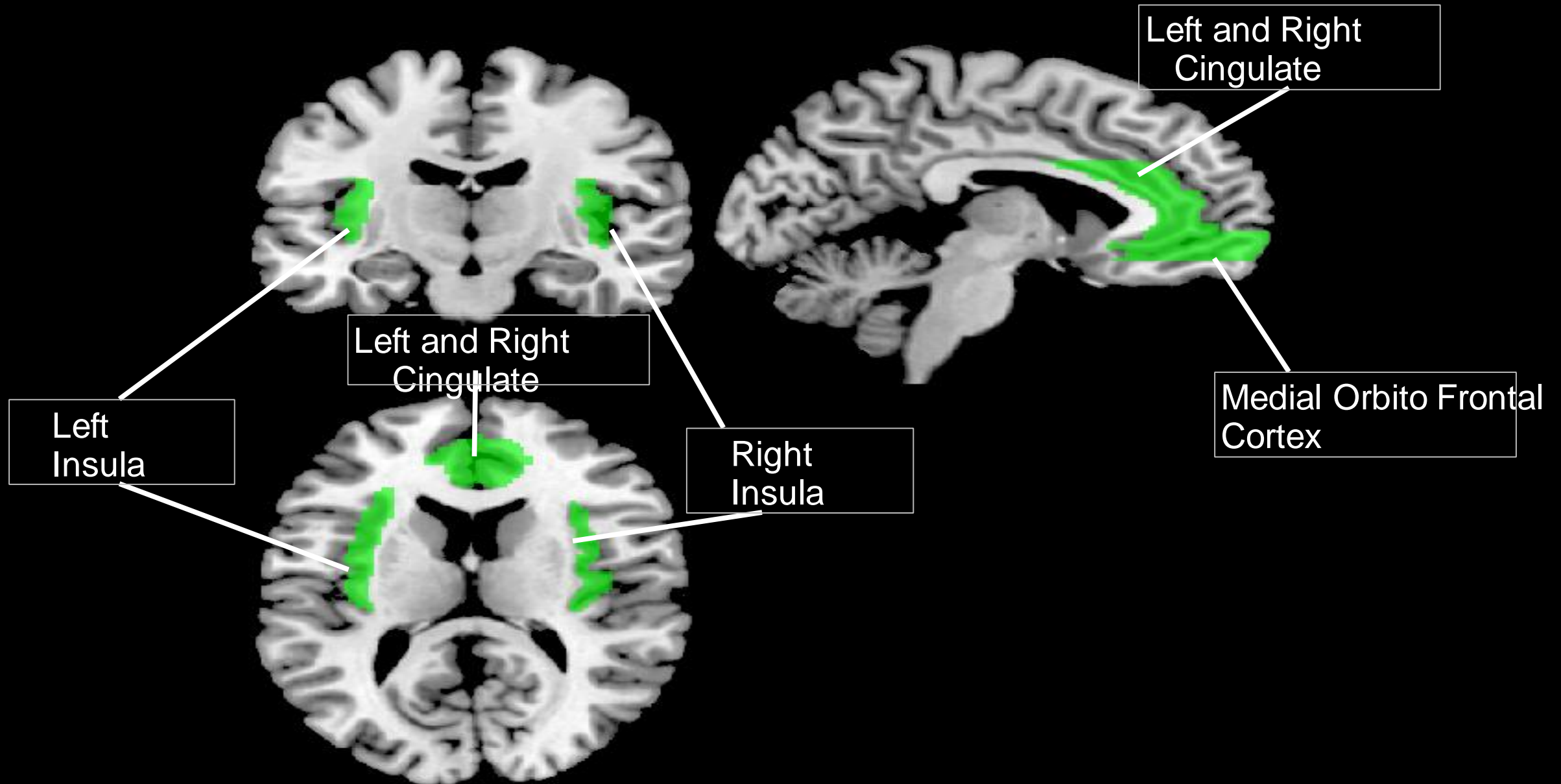




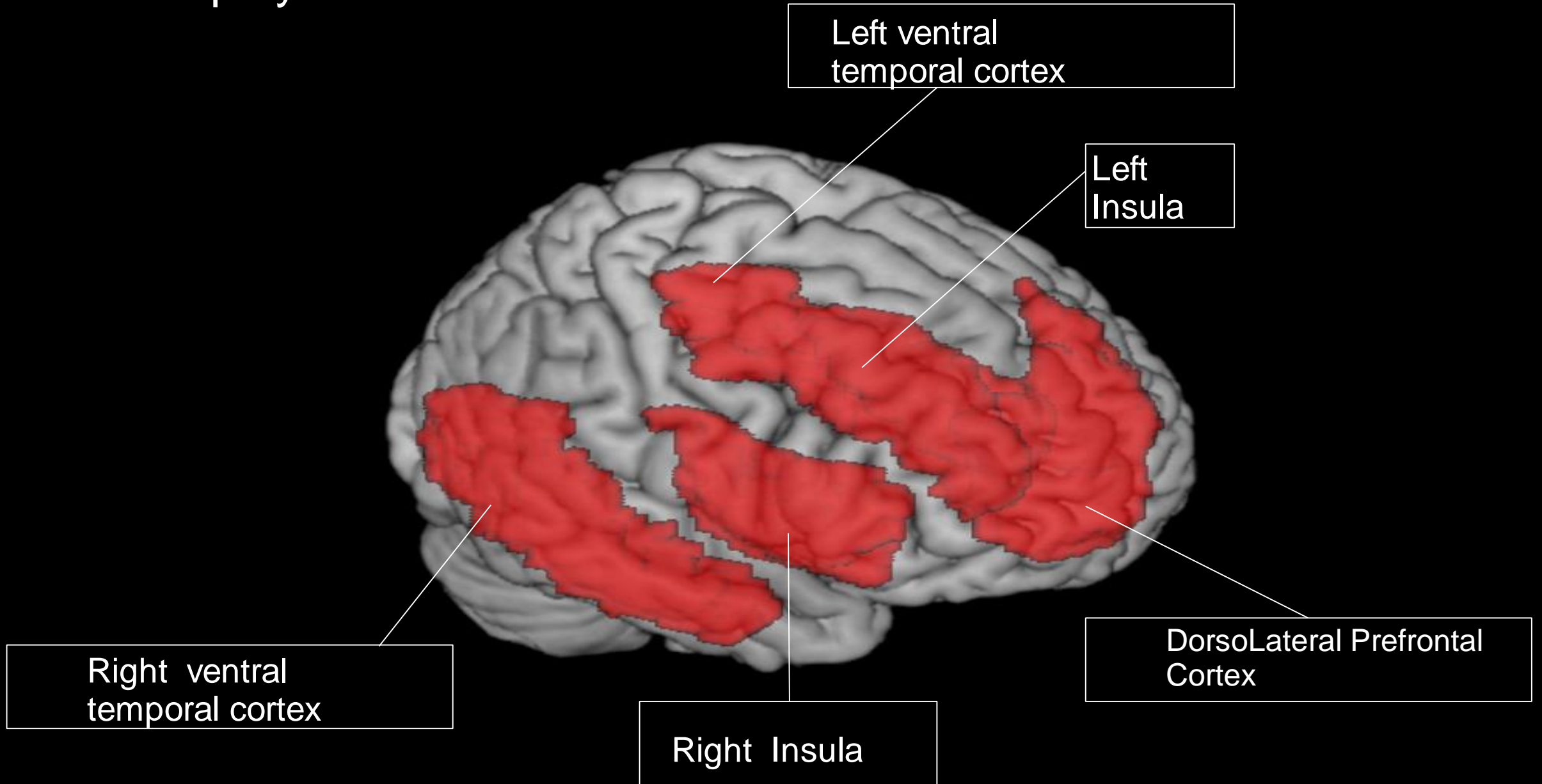
# Compassion Network



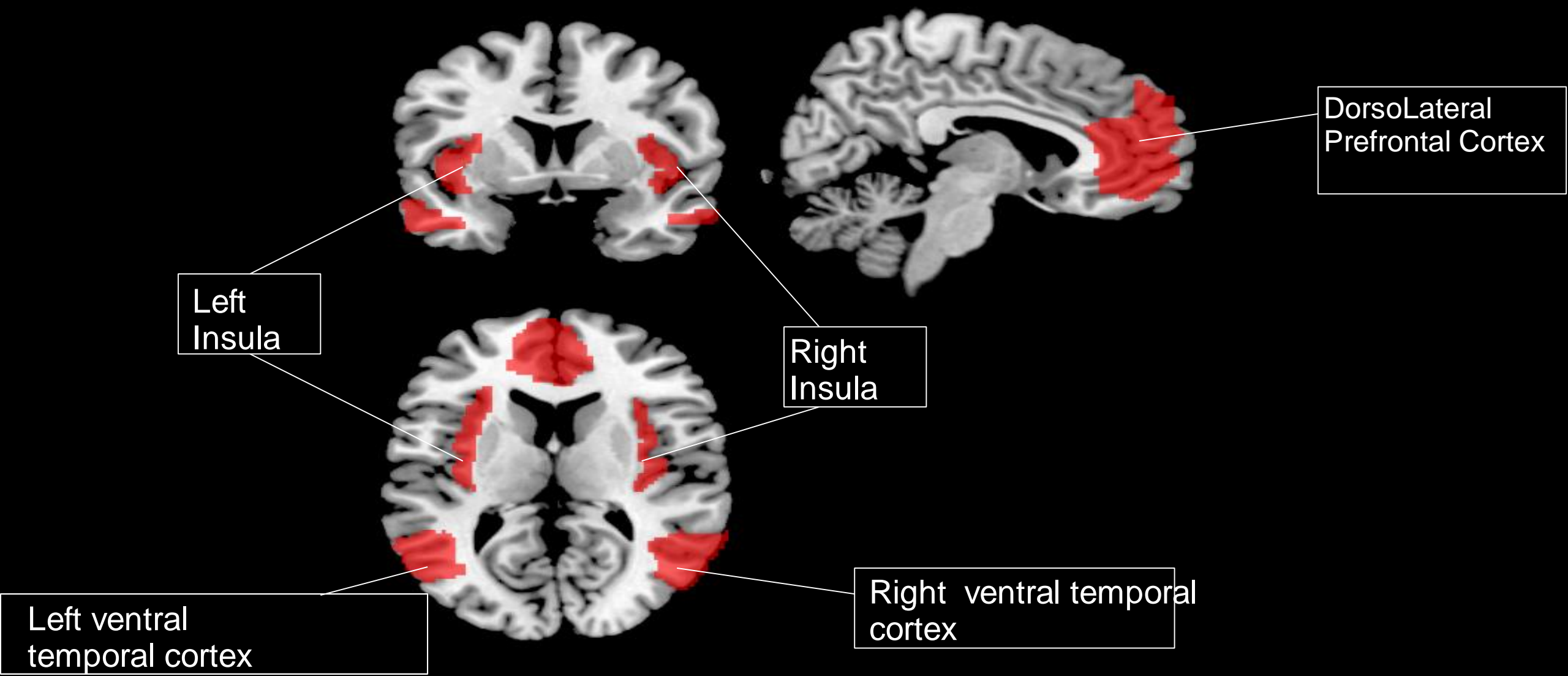
# Compassion Network



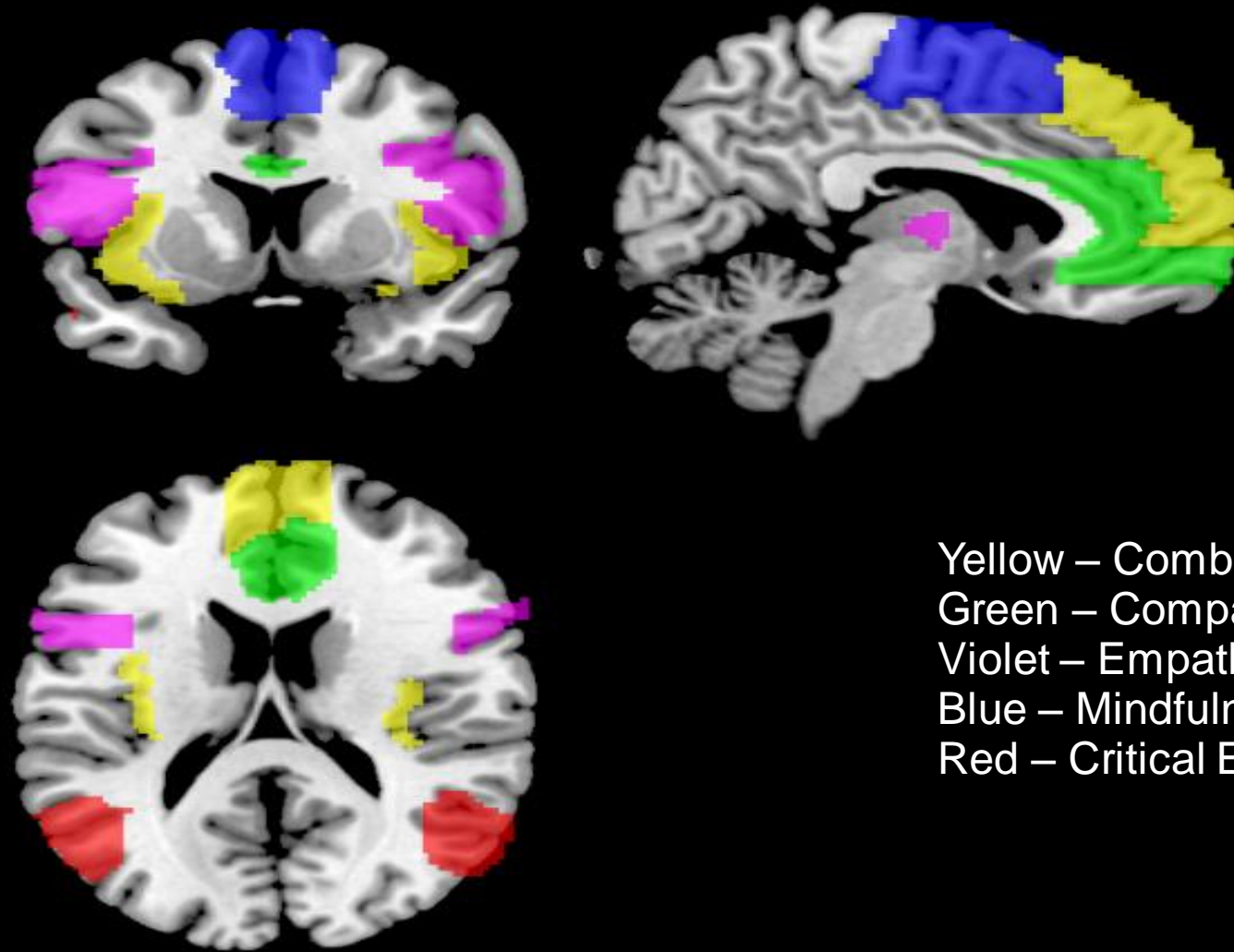
# Critical Enquiry Network



# Rational Enquiry Network



# The LIBRE Brain Network



Yellow – Combined network  
Green – Compassion only  
Violet – Empathy Only  
Blue – Mindfulness/Attention Only  
Red – Critical Enquiry Only

# WHOLE BRAIN APPROACH

Key Findings from latest neuroscience research (Singer 2015)

1. Mindfulness does not have any impact on E-C rating and Perspective scale
2. Perspective training increases behavioral performance in Perspective taking but little impact on E-C rating.
3. Compassion training increases behavioral performances in compassion rating and slight increase in behavioral performance in perspective taking



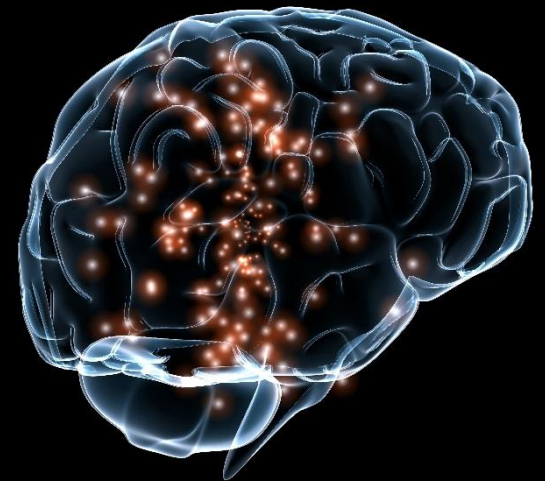
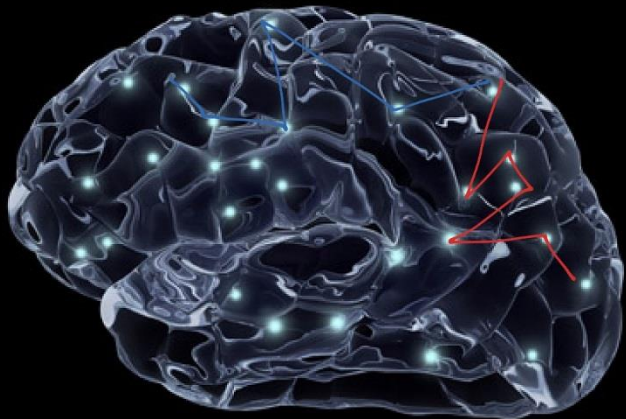
United Nations  
Educational, Scientific and  
Cultural Organization



Mahatma Gandhi Institute  
of Education for Peace  
and Sustainable Development

# The LIBRE programme

firing our Gandhi Neurons!



# The Future School





# Take home messages

- The human capital approach to education has outlived its usefulness
- The inclusion of life skills such as mindfulness, empathy, compassion and critical inquiry is key to improving wellbeing
- A whole brain approach is needed whereby rational intelligence and emotional intelligence are built simultaneously

# Contact MGIEP



United Nations  
Educational, Scientific and  
Cultural Organization



• Mahatma Gandhi Institute  
• of Education for Peace  
• and Sustainable Development

35 Ferozshah Road, ICSSR Building,  
New Delhi, 110001, India



[mgiep.unesco.org](http://mgiep.unesco.org)



[www.facebook.com/mgiep](https://www.facebook.com/mgiep)



[www.twitter.com/unesco\\_mgiep](https://www.twitter.com/unesco_mgiep)



+91-11-23072356-60



[Unesco Mgiep](https://www.youtube.com/UnescoMgiep)



[Unesco\\_mgiep](https://www.instagram.com/Unesco_mgiep)