

TÚS LA

Child & Family Agency,
Ireland

**The Development and Mainstreaming
Programme for Prevention, Partnership
and Family Support: Research and
Evaluation Study Dissemination Event,
16th February 2017, Croke Park, Dublin.**

Key Points:

- **Prevention, Partnership and Family Support within the overall service delivery framework for Tusla**
- **The need for robust research and evaluation in making the case for Prevention, Partnership and Family Support – for Senior Management Team, Board of Tusla and DCYA**
- **The need for research and evaluation data / analysis in underpinning best practice**

**Prevention, Partnership
and Family Support
within the overall
service delivery
framework for Tusla**

Legislative basis / organisational imperative of Prevention, Partnership and Family Support:

- **Child and Family Agency Act (2013)**
- **Irish National Policy Framework for Children and Young People - Better Outcomes, Brighter Futures 2014.**
- **The High-level Policy Statement on Parenting & Family Support 2015**

Tusla are working on a number of fronts to advance our Early Intervention and Prevention System: Translating Policy into Implementation...Guidance...Toolkits..National Training...Workforce Learning & Development.. Partnership Development.. More collaborative approaches with children, young people, families, communities and other stakeholders:

Prevention, Partnership and Family Support

Area Based Approach & the Meitheal National Practice Model



Early identification of need and help-provision to children and families across the continuum of care

Alternative Care Strategy

Cover all of Tusla's work

Child and Youth Participation

Parenting

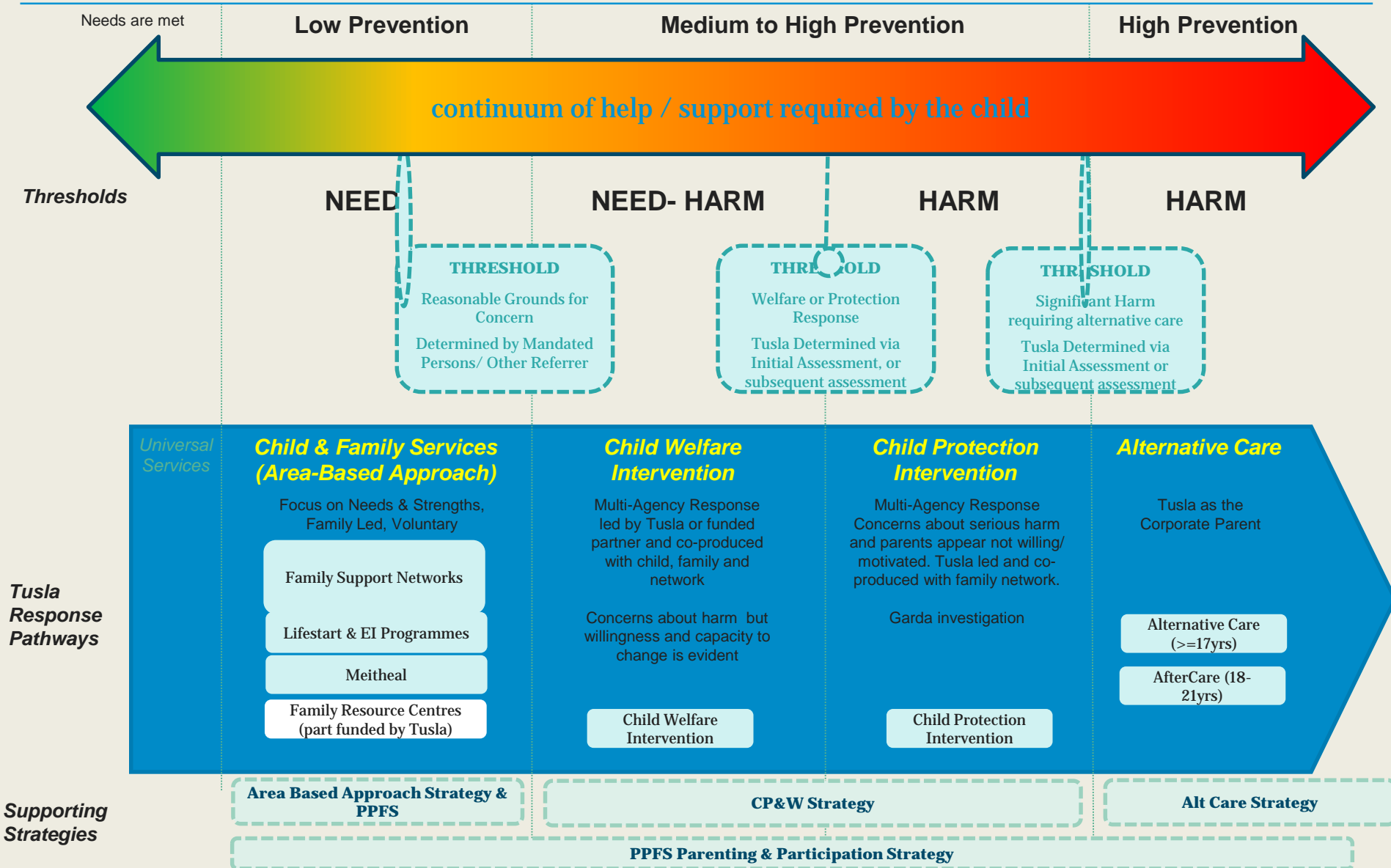
Hidden Harm

Commissioning

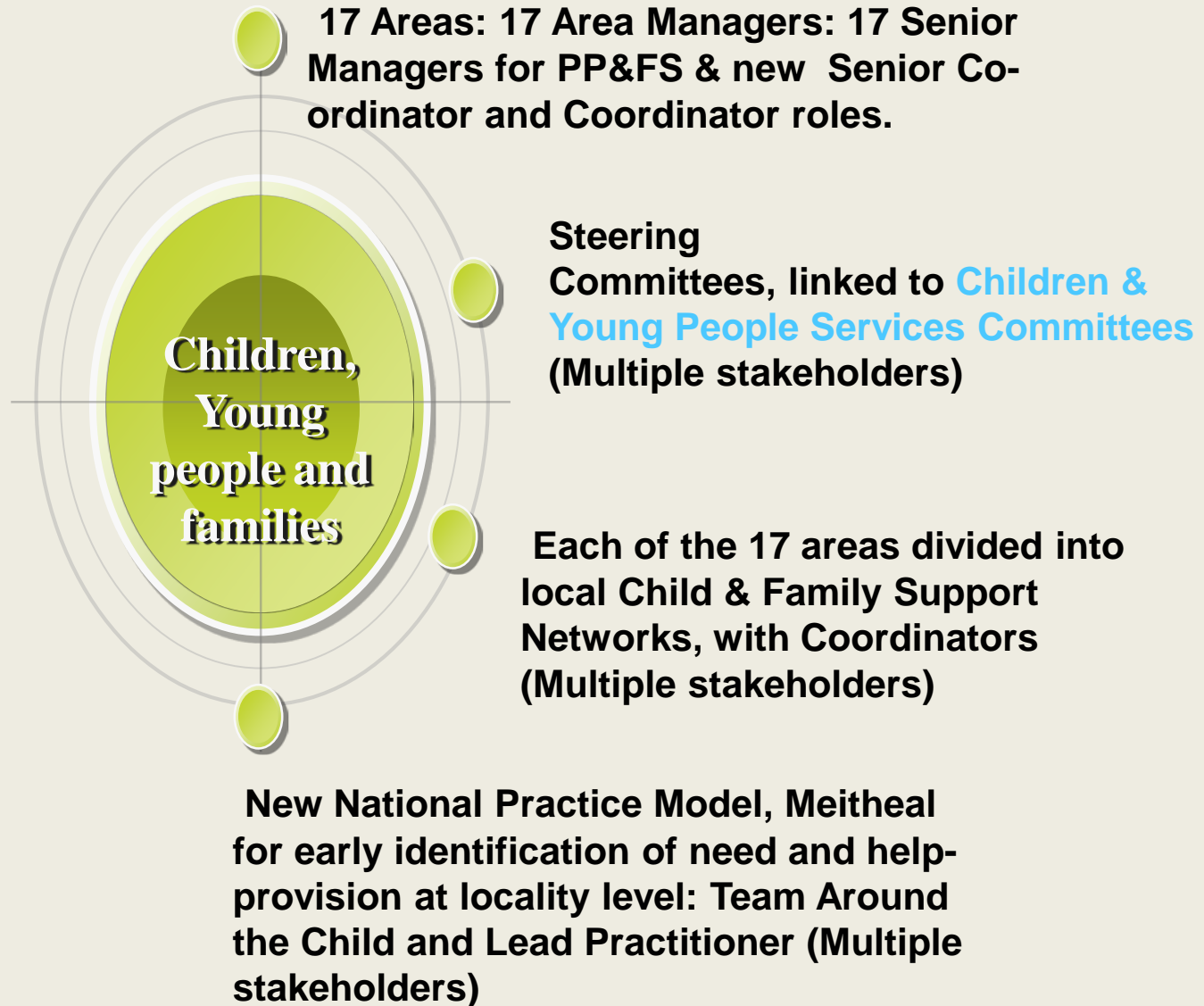
Public Awareness

PP&FS actioned through Tusla's National Service Delivery Framework

Response Pathways along the Continuum of Need



Tusla's Early Intervention and Prevention System: Is it delivering better outcomes for children? :



If the focus on prevention is to be sustained beyond the current Programme:

We need to:

- Scale up for future delivery and secure developmental funds for further investment in preventative programming across the continuum of care.
- Demonstrate that it has the potential to shift services and spend to more preventative approaches across the continuum of care.

If the focus on prevention is to be sustained beyond the current Programme:

We need:

Robust research and evaluation in making the case for Prevention, Partnership and Family Support – for Senior Management Team, Board of Tusla and DCYA

**Research
and
Evaluation
data
support
best
practice**

**•Supporting formative
change e.g. Participation
Toolkit**

**•Supporting change and
adaptations in
implementation e.g.
Meitheal Forms**

**•Advancing our focus on
evidence-informed and
evidence-based practice
e.g. CCA/Commissioning
Plans**

**•Informing our approaches
to continuing professional
development e.g.
Parenting Champions
Project**