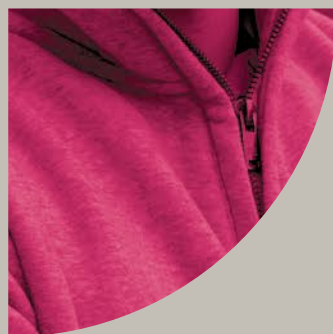
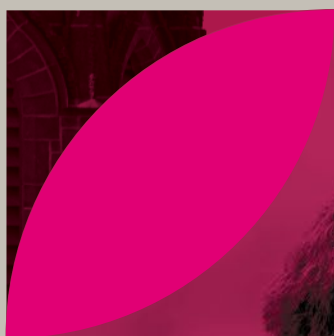




OLLSCOIL NA GAILLIMHE
UNIVERSITY OF GALWAY

Postgraduate Prospectus **2026**



University
ofGalway.ie



Welcome from the President

Your decision on postgraduate study is an important one. Thank you for considering Ollscoil na Gaillimhe – University of Galway for your future studies. From the day you arrive here, you will be part of a thriving research community where you will be encouraged to fulfil your potential.



Together, we are on a journey to become leaders in sustainability. Our university is rooted in the unique culture, communities and landscape of the west of Ireland and our research is focused on many of the world's most pressing challenges, as framed by the UN Sustainable Development Goals. We recognise our important role in shaping the sustainability leaders of the future and we will encourage you to be part of the solution.



We strive for excellence and impact in what we do. Galway is a global hub for medical technology, data and IT, and a city renowned for culture and creativity. From our location on the Atlantic coast, we have a proud tradition of marine ocean research. We want you to be part of our dynamic university community, learning from world-leading academics, gaining new skills and perspectives, and building a career that will sustain your own passions and excellence into the future.

We are proud to invite you to join our global postgraduate community. I look forward to welcoming you to University of Galway.

We are a global university, committed to outstanding students and staff, working in world-class facilities, conducting leading edge education and research.

We will be a driver of transformational change for our people, our region and our world, harnessing our distinctive strengths and creative energy to deliver significant and sustainable societal impact.

We want you to be and to feel part of that.

As a respectful university, we recognise the distinctive needs of our people, and we will support your well-being and development throughout your postgraduate student journey. We respect evidence and expertise, and we will call on you to develop critical thinking and apply rigour to your studies while here.

From our location on the edge of Europe, our university is open to the world. Ours is a diverse learning community, and we value the dynamism our 3,500 postgraduate students bring to Galway each year from over 110 countries. We work hard to ensure that ours is an accessible and inclusive campus, and during your time here you can expect to engage with a diversity of views and experiences. We are keen collaborators, and you'll see first-hand that our research benefits from insights, partnerships and networks from around the world.

**Professor-An tOllamh
Peter McHugh**
Interim President,
University of Galway
Uachtarán Eatramhach,
Ollscoil na Gaillimhe





6 Reasons to Pursue a Master's

Deciding to pursue postgraduate study is an exciting step, whether you're continuing straight from your undergraduate degree or returning to education after time in the workforce. At the University of Galway, we understand that this decision is an investment in your future, allowing you to deepen your knowledge, develop specialised skills, and open doors to exciting career opportunities.

Here's why postgraduate study at University of Galway is the right choice for you:

1. World-Class Education and Research

Ranked in the top 2% of universities*, our postgraduate programmes are rooted in cutting-edge research and taught by experts, fostering critical thinking and innovation.

2. Industry Connections and Career Opportunities

Our strong links with industry and research organisations provide real-world experience, career support, and opportunities to build a professional network, giving you a competitive edge.

3. Increase Your Earning Potential

A postgraduate qualification can increase your starting salary by €6,000–€8,000 compared to an undergraduate degree**, opening doors to higher-paying roles and better career prospects.

4. Flexible Learning Options

Whether full-time, part-time, or online, we offer flexible learning formats so you can tailor your study to fit your lifestyle and career goals.

5. A Thriving Academic Community

Join a vibrant community of postgraduate students and academics, where collaboration, peer learning, and networking are key to your success.

6. Pathway to Leadership and Innovation

Postgraduate study isn't just about knowledge, it's about developing leadership skills to drive change in your field. Whether as an entrepreneur, thought leader, or innovator, you'll gain the tools to shape the future.

Start your journey today and discover where postgraduate study at University of Galway can take you.

QS World University Rankings*
HEA, 2022**

Scholarships and Funding

Postgraduate Excellence Scholarship

Invest in Your Future with a €1,500 Scholarship

At the University of Galway, we're committed to supporting academic excellence. Our Postgraduate Excellence Scholarship offers a €1,500 award to eligible EU students embarking on a full-time taught master's programme. This scholarship recognises outstanding academic performance and is designed to ease the financial transition into postgraduate study.

Scholarship Overview

- Award: €1,500 per student
- Eligibility Criteria:
 - Achieve a first-class honours (or equivalent) in a Level 8 primary degree
 - Apply for a full-time taught master's programme at University of Galway
 - Submit a complete online scholarship application by 30 September 2026

Application Process

Please note that applying for this scholarship is a separate process from your programme application. The scholarship portal for 2026 will open in November 2025.

Global Excellence Scholarships

Supporting Outstanding Talent from Around the World

At the University of Galway, we are proud to welcome high-achieving students from across the globe. As part of our commitment to international excellence, we offer a variety of merit-based scholarships for students from non-EU countries. These scholarships are aligned with our strategic international priorities and are designed to recognise academic excellence, encourage global engagement, and support students as they begin their studies with us.

Other Postgraduate Funding and Scholarship Opportunities

- NUI Awards
- Global Study Awards
- HCI Pillar One Awards
- Sports Scholarships
- Education.com
- Springboard scheme
- Hardiman Research scholarship

College specific scholarships

Each of our four colleges at University of Galway also offers discipline specific scholarships.

College of Arts, Social Science and Celtic Studies

College of Business, Public Policy and Law

College of Medicine and Health

College of Science and Engineering



"One of the biggest challenges of pursuing a postgraduate degree can be the financial commitment, but the Postgraduate Excellence Scholarship made a significant difference. It provided financial support, recognised my academic achievements, and allowed me to focus on my coursework and personal development without financial stress."

Conrad Dixon, Postgraduate Excellence Scholarship Recipient

Please check out the full list of scholarship opportunities Find out more:





Galway City:

A Vibrant *Home* for Postgraduate Study

Nestled on the edge of Europe, where the River Corrib meets the Atlantic Ocean, Galway City is more than just a postcard-perfect destination – it's a thriving hub for innovation, creativity, and academic excellence. For postgraduate students seeking a unique blend of rigorous study and quality of life, Galway offers a dynamic and enriching environment unlike anywhere else in Ireland.



Connected and Career-Focused

As a university city, Galway has a thriving ecosystem of tech companies, start-ups, research centres, and public agencies, offering postgraduate students unparalleled access to internships, research collaborations, and employment opportunities. The city's compact size fosters close-knit academic and professional communities, making networking and career development feel natural and accessible.

A Lifestyle That Supports Wellbeing

With the sea on your doorstep, Connemara just a short drive away, and bustling cafés and co-working spaces around every corner, Galway offers a lifestyle that balances study and self-care. The city's friendly, welcoming atmosphere ensures that every student—whether arriving from another Irish county or another continent—feels part of a supportive and diverse community from day one.



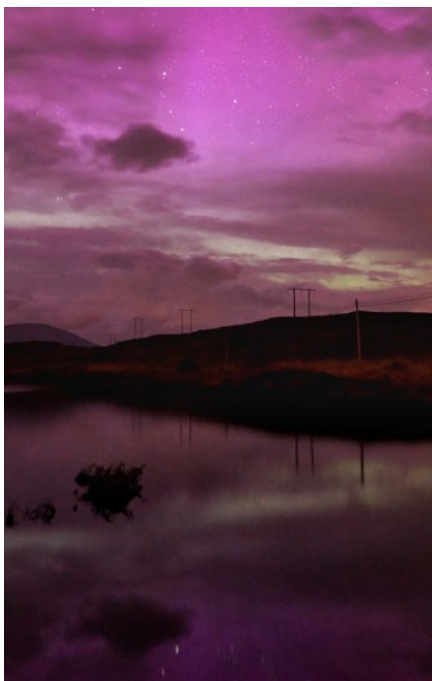
A City of Culture and Creativity

Named the European Capital of Culture in 2020, Galway is renowned for its artistic spirit, vibrant street life, and year-round festivals celebrating everything from literature to film to traditional Irish music. For students, this means an immersive cultural experience that complements academic pursuits—fuelling creativity, sparking ideas, and creating countless opportunities for inspiration outside the classroom.



Global Thinking, Local Living

Galway may be small in size, but its outlook is global. It's a place where ideas cross borders, and where postgraduate students from around the world come to learn, grow, and make lasting connections. From ground-breaking research to riverside study sessions, Galway is where academic ambition meets an unforgettable student experience.





Employment *and* Careers

Choosing to pursue a postgraduate degree is a strategic investment in your future. In a world shaped by rapid digital change, global mobility, and evolving workplace needs, having a postgraduate qualification is more important than ever. According to HEA, the most common reasons for undertaking further study was “to change or improve my career options” (24.5%) followed by “it is a requirement for finding and progressing in future employment” (23.5%).

Career Impact and Employability

Postgraduate qualifications significantly boost your employability. The Higher Education Authority's Graduate Outcomes Survey (2023) reports, 82% of taught postgraduate students in Ireland secure full-time employment within 9 months of graduation. Employers increasingly seek candidates with the specialised knowledge, problem-solving ability, and adaptability that a postgraduate qualification offers.

Earning Power and Return on Investment

Postgraduate study leads to measurable financial benefit. Data from HEA Graduate Outcomes

show postgraduate degrees lead to higher earning potential with 52.1% of Postgraduate Taught graduates earning over €40,000 annually, with 9.8% earning above €80,000. A clear return on your educational investment.

Career Development Centre

At the University of Galway, our global award-winning **Career Development Centre** is committed to helping postgraduate students achieve meaningful, ambitious careers in Ireland and internationally. Whether you are looking to pivot, advance, or prepare for a global future, our services are designed with your next step in mind.



Here's how we support your employability:

Agile, Data-Driven Service

Our approach is responsive and evidence-based. We provide **over 20,000 career service engagement opportunities** for students each year and track outcomes weekly, using real-time data to tailor services, scale support, and schedule events based on emerging student needs.

Personalised 1:1 Career Guidance

Expert advice tailored to postgraduates, including CV & interview coaching, job searching, and career planning.

Career Workshops & Events

Workshops covering everything from CVs to personal branding, self-awareness, professional skills, LinkedIn, emotional intelligence, Find part-time jobs and, using AI for your recruitment journey.

Strategic Career Readiness Framework

Our *Discover – Develop – Apply* model supports each stage of your career journey.

AI-Powered Digital Toolkit

Access tools for CV and interview skills and our virtual careers library available 24/7.

Career Pathways Learning Platform

Self-paced, modular learning across CVs, cover letters, interviews, job search, and self-awareness for career exploration.



Employer Engagement at Scale

3,000+ employers connected annually through fairs, skills events, placement and tailored workshops including SME and multinational partners.

Placement Support

Across over 75 work-based learning programmes, with 2,200+ students placed each year across all industry sectors.

Employability Award

Our global award winning Employability Award, completed by over 3,400 students and recognised by employers and aligned with real-world skills development facilitated by employers.

Inclusive and Sector Leading Programmes

We offer a Transition to Employment initiative supporting students with disabilities entering the workforce, and Language Cafes for global talent.

Early Insight Events

Pre-arrival and orientation sessions to build labour market awareness from day one.

Global Employability Support

Awarding winning Global Employability Support provides access to *GoingGlobal* platform for global opportunities, **70 bespoke workshops** and events attracting **6,600 student attendees** covering crucial topics such as the Irish labour market, recruitment practices, CV adaptation, cultural norms, interview preparation, employment law, and graduate work permits.

"I thought I was doing everything right yet wasn't landing a single interview! The Global Employability service didn't just help me get a job; they helped me believe in myself."

With 98% student satisfaction and sector-leading engagement, we don't just help you find a job, we prepare you to thrive in a dynamic global workplace.



@UniversityofGalwayCareers



@GalwayCareers

3,000+

Employers connected annually through fairs, skills events, placement and tailored workshops

75

Work-based learning programmes

2,200+

Students placed each year across all industry sectors

1:1

Expert advice tailored to postgraduates



A Global Education

At University of Galway, a truly global learning environment awaits. Our diverse postgraduate community includes students from over 110 countries, offering a rich blend of cultures, perspectives, and lived experiences. You'll engage in open discussions, collaborate with peers from around the world, and develop a global outlook – essential for navigating today's interconnected world.

We are proud to be home to world-leading academics whose research tackles some of the biggest global challenges. As a student, you will benefit from their expertise, with opportunities to engage with real-world case studies and innovative thinking that bridges theory and practice.

Many of our programmes focus on global issues. Some offer chances to work with international teams online or to study in other countries. But what makes us special is the international mix of students in every classroom. Everyone's contribution is welcomed to enrich the conversation and build a deeper understand of different contexts and viewpoints

We also foster strong links with industry, NGOs, and globally recognised research networks. This means our graduates are not only academically accomplished but also prepared to make meaningful contributions in global and local workplaces.

International Student Entry Requirements

Entry requirements vary by programme, but most master's courses require a relevant undergraduate qualification. If English is not your first language, you will need to submit a recognised English-language test, such as IELTS or TOEFL.

As part of our Global Galway support system, the University's **English Language Centre (ELC)** plays a key role in helping students prepare for and succeed in their academic journey. Whether you need to meet a language requirement or simply wish to build confidence in academic English, our ELC offers high-quality preparatory and in-sessional programmes tailored to postgraduate study.

You'll benefit from expert teaching, small-group support, and a welcoming, global environment that reflects the diversity and dynamism of the wider university community.

Learn more about how the ELC can support your academic goals: [universityofgalway.ie/englishlanguage](https://www.universityofgalway.ie/englishlanguage)

For full programme-specific and country-specific entry requirements, please visit our website.

4,000

International
Students

110

Countries

Graduate Stay Back Option

International students who complete a recognised postgraduate qualification in Ireland may be eligible to remain in the country for up to 24 months to seek employment under the Third-Level Graduate Stay Back Scheme. This offers a valuable opportunity to gain global work experience right after graduation. At University of Galway, our award-winning Employability Team is on hand to support you in making the most of this opportunity, offering expert guidance, career development programmes, and connections to leading employers.

Immigration and Support

Students from the UK, EU, and EEA do not need a visa to study in Ireland. Other international students must comply with Irish immigration regulations. We know that preparing to study abroad can be complex, so our Global Galway team is here to support you every step of the way—from visa guidance to settling into life in Galway.



Find out more

www.universityofgalway.ie/global-galway

e. international@universityofgalway.ie

t. +353 91 495 277

Instagram: @globalgalway

X: @StudyInGalway

Facebook: globalgaillimh

LinkedIn: globalgalway

YouTube: @global_galway

Student Engagement Platform



"If you're coming from abroad, know that you'll be welcomed with open arms. Galway is a safe, friendly city, and the university has excellent support services for international students. Be open-minded, explore the local culture, and say yes to opportunities."

Sunaina Ashok Kodalkar,
MSc Clinical Research



College of Arts, Social Sciences and Celtic Studies

At the College of Arts, Social Sciences and Celtic Studies, we are dedicated to advancing critical thinking, championing creativity, and making a positive impact on the world.

As a leader in teaching and research excellence, deeply embedded in the cultural and intellectual fabric of Galway, we are committed to driving progress and creating a better future for all.

Our postgraduate programmes are designed to push the boundaries of knowledge and foster innovation. Whether your interests lie in the humanities, social sciences, or Celtic studies, you will find a rich academic environment that supports and challenges you. Our faculty are distinguished scholars and dedicated mentors who are passionate about guiding you through your academic journey.

Engaging with our postgraduate community means becoming part of a dynamic network of thinkers and innovators. You will have the opportunity to participate in ground breaking research, contribute to influential projects, and collaborate with peers who share your dedication to excellence. Our programmes not only equip you with advanced knowledge and skills but also prepare you to be a leader in your field, ready to make a significant impact locally and globally.

The vibrant city of Galway, with its unique blend of cultural heritage and modern dynamism, provides the perfect backdrop for your studies. Here, you can immerse yourself in a community that values diversity, fosters creativity, and encourages critical engagement with the world around you.

Join us at the College of Arts, Social Sciences, and Celtic Studies, where your passion and potential will be nurtured and expanded. Together, we can achieve great things, contributing to the intellectual and cultural life of Galway and beyond.

Think, act and live for everyone.

Course Name	Course Type	Contact Email	Duration	Closing Date	Tuition fees, per annum* EU Non-EU	
Acadamh na hOllscolaíochta Gaeilge						
Ateangaireacht Chomhdhála	MA, PDip	ateangaireacht@ollscoilnagaillimhe.ie	1 Yr FT	Ar bhonn leanúnach	€7,900 MA €5,350 PDip	€19,300 MA
Conference Interpreting	MA, PDip	ateangaireacht@ollscoilnagaillimhe.ie	1 Yr FT	Ar bhonn leanúnach	€7,900 MA Check website PDip	€19,300 MA
Cleachtas Gairmiúil sna Meáin	MA, PDip	dan.dwyer@ollscoilnagaillimhe.ie	1 Yr FT; 2 Yrs PT	Ar bhonn leanúnach	€7,900 MA; Check website	€19,900 MA; Check website
Gaeilge Fheidhmeach	HDip	eamon.ocofaigh@ollscoilnagaillimhe.ie	2 Yrs PT	Ar bhonn leanúnach	€3,800	€13,200
Léann an Aistriúcháin	MA, PgCert	aistriu@ollscoilnagaillimhe.ie	2 Yrs FT; 1 Yr FT; 1 or 2 Yrs FT	Ar bhonn leanúnach	€4,050 MA; Check website PGCert	€18,300 MA
Léann Teanga	MA, PDip	leannteanga@ollscoilnagaillimhe.ie	2 Yrs PT	Ar bhonn leanúnach	€4,050 MA Check website PDip	€18,300 MA
Léann Teanga: Phleanáil Teanga	PgCert	hugh.rowland@ollscoilnagaillimhe.ie	1 Yr FT	Ar bhonn leanúnach	€2,550	N/A
Teastas larchéime (Léann an Aistriúcháin)	PgCert	aistriu@ollscoilnagaillimhe.ie	1 Yr PT; 1 or 2 Yrs PT	Ar bhonn leanúnach	€2,800	
College of Arts, Social Sciences and Celtic Studies						
Burren College of Art (BCA)						
Art and Ecology	MA, MFA, HDip	lisa@burrencollege.ie	1 Yr FT; 2 Yrs FT; 1 Yr FT	1 February 2026	€11,955 MA; €9,500 MFA; €9,500 HDip	€23,460 MA; €18,990 MFA; €18,990 HDip
Fine Art	HDip	lisa@burrencollege.ie	1 Yr FT	1 February 2026	€9,500	€18,990
Fine Art: Studio Art	MA, MFA	lisa@burrencollege.ie	1 Yr FT; 2 Yrs FT	1 February 2026	€11,955 MA; €9,500 MFA	€23,460 MA; €18,990 MFA
School of Education						
Adolescent Health	MSc	education@universityofgalway.ie	1 Yr FT; 2 Yrs PT	Continuous basis	€8,150 FT; €4,100 PT	€19,900
Education (Professional Master of, [Post-Primary])	PME	education@universityofgalway.ie	2 Yrs FT	31 January 2026	€6,600	€18,800
Oideachas (Máistir Gairmiúil san, [Iar-bhunscoil])	MGO	mgo@ollscoilnagaillimhe.ie	2 Yrs FT	31 January 2026	€6,600	€18,800
Special Educational Needs	PDip	pdsen@universityofgalway.ie	1 Yr PT	Date determined by the relevant Department of Education Circular issued annually	€2,330	€15,300
School of English, Media and Creative Arts						
Drama and Theatre Studies	MA	charlotte.mcivor@universityofgalway.ie	1 Yr FT; 2 Yrs PT	Continuous basis	€7,900 FT; €4,000 PT	€19,900
English	MA	sean.ryder@universityofgalway.ie	1 Yr FT; 2 Yrs PT	Continuous basis	€7,900 FT; €4,000 PT	€19,300
Film Studies: Theory and Practice	MA	tony.tracy@universityofgalway.ie	1 Yr FT; 2 Yrs PT	Continuous basis	€8,150 FT; €4,100 PT	€19,900
Global Media and Communication	MA	rounwah.bseiso@universityofgalway.ie	1 Yr FT	Continuous basis	€10,700	€20,750
Journalism	MA	fiona.mcgarry@universityofgalway.ie	1 Yr FT	Continuous basis	€10,700	€20,750
Literature and Publishing	MA	alexandra.peat@universityofgalway.ie	1 Yr FT	Continuous basis	€8,150	€19,900
Public Advocacy and Activism	MA, PDip	fiona.bateman@universityofgalway.ie	1 Yr FT; 2 Yrs PT	Continuous basis	€7,900 FT MA; €4,100 PT MA; Check website PDip	€19,300
Writing	MA	mike.mccormack@universityofgalway.ie	1 Yr FT	Continuous basis	€8,150	€19,900

Course Name	Course Type	Contact Email	Duration	Closing Date	Tuition fees, per annum* EUNon-EU	
School of Geography, Archaeology and Irish Studies						
Coastal and Marine Environments: Physical Processes, Policy and Practice	MSc	kevin.lynch@universityofgalway.ie	1 Yr FT	Continuous basis	€8,150	€19,300
International Development	MA	john.morrissey@universityofgalway.ie	1 Yr FT	Continuous basis	€8,150	€19,900
Planning and Development	MA	therese.conway@universityofgalway.ie	1 Yr FT; 2 Yrs PT	Continuous basis	€7,900 FT; €4,000 PT	€19,300
School of History and Philosophy						
History	MA, PDip	helena.condon@universityofgalway.ie	1 Yr FT, 2 Yrs PT	Continuous basis	€7,900 FT MA; €4,000 PT MA;	€19,300 FT MA
Philosophy	Structured Research Master's	felix.omurchadha@universityofgalway.ie	1 Yr FT; 2 Yrs PT	Continuous basis	€7,900 FT; €4,000 PT	€19,900
School of Languages, Literatures and Cultures						
Classics	Structured Research Master's	michael.clarke@universityofgalway.ie	1 Yr FT; 2 Yrs PT	Continuous basis	€7,900 FT; €4,000 PT	€19,900
French	Structured Research Master's	mary.mannion@universityofgalway.ie	1 Yr FT; 2 Yrs PT	Continuous basis	€7,900 FT; €4,000 PT	€19,900
German	Structured Research Master's	deirdre.byrnes@universityofgalway.ie	1 Yr FT; 2 Yrs PT	Continuous basis	€7,900 FT; €4,000 PT	€19,900
International Contemporary Literatures and Media	MA	tina-karen.pusse@universityofgalway.ie kate.quinn@universityofgalway.ie	1 Yr FT; 2 Yrs PT	Continuous basis	€7,900 FT; €4,000 PT	€19,300
Spanish	Structured Research Master's	kate.quinn@universityofgalway.ie	1 Yr FT; 2 Yrs PT	Continuous basis	€7,900 FT; €4,000 PT	€19,900
Translation Studies	MA	tamara.deinesanton@universityofgalway.ie	1 Yr FT	Continuous basis	€7,900	€19,900
School of Political Science and Sociology						
Child, Youth and Community	MA, PDip	Semester 1 daniellekeenane@universityofgalway.ie Semester 2 cormac.forkan@universityofgalway.ie	1 Yr FT; 2 Yrs PT	Continuous basis	€7,900 FT MA; €5,350 FT PDip PT Check Website	€19,300 FT MA; €14,800 PDip
Family Support Studies	MA, PDip	carmel.devaney@universityofgalway.ie	2 Yr PT	Continuous basis	€2,300	
Gender, Globalisation and Rights	MA	nata.duvvury@universityofgalway.ie	1 Yr FT; 2 Yrs PT	Continuous basis	€8,650 FT; €4,350 PT	€20,400
Public Policy	MA	evans.fanoulis@universityofgalway.ie	1 Yr FT; 2 Yrs PT	Continuous basis	€8,650 FT; €4,350 PT	€19,900
Social Work	MA	socialwork@universityofgalway.ie	2 Yrs FT	31 January 2026	€8,900	€19,900
School of Psychology						
Applied Behaviour Analysis	MSc	aoifemaria.mctiernan@universityofgalway.ie	2 Yr FT	Continuous basis	€10,700	€20,400
Clinical Neuroscience	MSc	ciara.egan@universityofgalway.ie	1 Yr FT	Continuous basis	€8,900	€20,400
Clinical Psychology	DPsychSc	clinicalpsychology@universityofgalway.ie	3 Yrs FT	Check website	Check website	Check website
Health Psychology	MSc	molly.byrne@universityofgalway.ie gillian.davies@universityofgalway.ie	1 Yr FT; 2 Yrs PT	Continuous basis	€8,650 FT; €4,350 PT	€20,400
Psychology (HDip—Conversion)	HDip	mark.elliott@universityofgalway.ie	1 Yr FT	5 June 2026	€7,400	€18,300

Course Name	Course Type	Contact Email	Duration	Closing Date	Tuition fees, per annum* EUNon-EU	
Structured Research Master's in Arts						
Classics	Structured Research Master's	michael.clarke@universityofgalway.ie	1 Yr FT; 2 Yrs PT	Continuous basis	€7,900 FT; €4,000 PT	€19,900
French	Structured Research Master's	mary.mannion@universityofgalway.ie	1 Yr FT; 2 Yrs PT	Continuous basis	€7,900 FT; €4,000 PT	€19,900
German	Structured Research Master's	deirdre.byrnes@universityofgalway.ie	1 Yr FT; 2 Yrs PT	Continuous basis	€7,900 FT; €4,000 PT	€19,900
Philosophy	Structured Research Master's	felix.omurchadha@universityofgalway.ie	1 Yr FT; 2 Yrs PT	Continuous basis	€7,900 FT; €4,000 PT	€19,900
Spanish	Structured Research Master's	kate.quinn@universityofgalway.ie	1 Yr FT; 2 Yrs PT	Continuous basis	€7,900 FT; €4,000 PT	€19,900

- Under 'Closing Date', Continuous basis=this course has no set closing date. Offers are made on a continuous basis.
- Under 'Duration', FT=Full-Time, PT=Part-Time.
- Under 'Non-EU Fees', N/A=Not Applicable.
- Tuition fees per annum are listed here. A student levy (€140 for 2026/27) is also payable.

* Fees are correct at the time of going to print, but are subject to change (errors and omissions excepted).

**College of Arts,
Social Sciences,
and Celtic Studies**



An tAcadamh



“

Getting to know the staff during the MA Drama and Theatre Studies was a highlight. They were all so encouraging during my studies and I felt really supported. They had such an interest in the subjects that they were teaching. They really saw students as an equal, recognising that you know what you're doing and they're there to be a guiding hand.

During the MA I developed many skills which I use in my job now. I am currently working in Branar, a local theatre company in Galway. I learned about marketing for arts organisations in some of the modules on this course and the reason I got the job that I have now is because of these skills.

Noel Minogue
MA Drama and Theatre Studies
Graduate

Noel

College of Business, Public Policy and Law

This distinguished, award-winning College encompasses three esteemed schools: the J.E. Cairnes School of Business and Economics, the School of Law and Shannon College of Hotel Management.

Our academic staff are actively engaged in research across commercial and public policy domains, and are recognised as thought leaders in their respective fields, driving innovation through original and impactful scholarship.

J.E. Cairnes School of Business and Economics

Our globally engaged School of Business and Economics focuses on the public good and transformative impact for students, society and business. We tailor our business postgraduate programmes to the professional skills required to succeed in a competitive international environment. The Association to Advance Collegiate Schools of Business International (AACSB) and the Association of MBAs (AMBA) have accredited the School, and we have received the Athena SWAN Silver Award. Programmes focus on research-led teaching, innovative approaches, and cutting-edge technologies, while students benefit from industry engagement and a global experience.

School of Law

Ranked globally in the Top 200 Law Schools (QS 2025), University of Galway School of Law's postgraduate programmes provide access to world-class academics in the School and its four internationally renowned research centres: Irish Centre for Human Rights, Centre for Disability Law and Policy, the Centre for Housing Law, Rights and Policy, and the Centre for Law, Religion, and Society.

We deliver our taught postgraduate programmes in a stimulating and supportive environment. Students can avail of exciting opportunities for specialised qualifications, and many programmes facilitate international field trips, with some offering prestigious work placements.

Shannon College of Hotel Management

For over 70 years, Shannon College of Hotel Management has been a leader in delivering world-class business education tailored to the global hospitality industry. As part of the University of Galway, we are proud to be ranked among the top 150 institutions worldwide for Hospitality and Leisure Management in the QS Subject Rankings 2024.

Our commitment to excellence extends beyond academics. We are proud recipients of the Athena SWAN Bronze Award, recognizing our dedication to gender equality and the promotion of inclusive, supportive working environments.



Course Name	Course Type	Contact Email	Duration	Closing Date	Tuition fees, per annum*	
EU						
Non-EU						
J.E. Cairnes School of Business and Economics						
Conversion						
Business Studies	HDip	dbis@universityofgalway.ie	1 Yr FT	Continuous basis	€7,400	€15,300
Financial Analysis	HDip	economics@universityofgalway.ie	1 Yr FT	Continuous basis	€5,950	€15,300
Accounting and Finance						
Accounting	MAcc	accountancy@universityofgalway.ie	1 Yr FT	Continuous basis	€11,700	€20,400
Corporate Finance	MSc	accountancy@universityofgalway.ie	1 Yr FT	Continuous basis	€11,700	€21,500
International Accounting and Analytics (Pathway A)	MSc	accountancy@universityofgalway.ie	1 Yr FT	Continuous basis	€11,700	€20,750
International Accounting and Analytics (Pathway B)	MSc	accountancy@universityofgalway.ie	7 Months	Continuous basis	€7,900	€13,700
Interdisciplinary						
Financial Analysis	HDip	economics@universityofgalway.ie	1 Yr FT	Continuous basis	€5,950	€15,300
Master of Business Administration (MBA)	MBA	orla.naughton@universityofgalway.ie mba@universityofgalway.ie	2 Yrs PT	Continuous basis	€16,300	€18,300
Sustainability Leadership <i>Check website for updates on 2026 enrollment.</i>	MSc	martina.sweeney@universityofgalway.ie	2 Yrs PT	Continuous basis	€8,900	€13,200
Management						
International Management	MSc	management@universityofgalway.ie	1 Yr FT	Continuous basis	€11,700	€21,500
Human Resource Management	MSc	management@universityofgalway.ie	1 Yr FT	Continuous basis	€11,700	€21,500
Management and Sustainability	MSc	management@universityofgalway.ie	1 Yr FT	Continuous basis	€11,700	€20,750
Economics						
Fintech (Economics and Financial Technology)	MSc	economics@universityofgalway.ie	1 Yr FT	Continuous basis	€11,700	€20,750
Global Environmental Economics	MSc	economics@universityofgalway.ie	1 Yr FT; 2 Yrs PT	Continuous basis	€7,900 FT; €4,350 PT	€20,400
Health Economics	MSc	economics@universityofgalway.ie	1 Yr FT; 2 Yrs PT	Continuous basis	€8,650 FT; €4,350 PT	€20,400
International Finance	MEconSc	economics@universityofgalway.ie	1 Yr FT	Continuous basis	€11,700	€20,750
Business Information Systems						
Business Analytics	MSc	bis@universityofgalway.ie	1 Yr FT	Continuous basis	€11,700	€21,500
Cybersecurity Risk Management <i>Part-time version of this course is under review, check website for updates.</i>	MSc	bis@universityofgalway.ie	1 Yr FT	Continuous basis	€11,700	€21,500
Information Systems Management	MSc	bis@universityofgalway.ie	1 Yr FT	Continuous basis	€8,650	€21,500
Marketing						
Digital Marketing	MSc	mscmktg@universityofgalway.ie	1 Yr FT	Continuous basis	€11,700	€20,750
Marketing Management	MSc	mscmktg@universityofgalway.ie	1 Yr FT, 2 Yrs PT	Continuous basis	€11,700 FT; €5,850 PT	€20,750
Marketing Practice	MSc	marketingpractice@universityofgalway.ie	1 Yr FT	Continuous basis	€11,700	€21,500
Shannon College of Hotel Management						
Business and Hospitality	MSc	loraine.kavanagh@universityofgalway.ie	1 Yr FT; 2 Yrs PT	Continuous basis	€10,700 FT; €5,350 PT	€19,300
Global Hospitality Management and Intercultural Communication	MSc	loraine.kavanagh@universityofgalway.ie	1 Yr FT; 2 Yrs PT	Continuous basis	€10,700 FT; €5,350 PT	€19,300
Hospitality and Leadership	PgCert	loraine.kavanagh@universityofgalway.ie	1 Semester	Continuous basis	€4,050	€7,100
Hospitality Management	PgCert	loraine.kavanagh@universityofgalway.ie	1 Semester	Continuous basis	€4,050	€7,100
Hospitality Performance, Revenue and Asset Management	MSc	loraine.kavanagh@universityofgalway.ie	1 Yr FT, 2 Yrs PT	Continuous basis	€10,700 FT; €5,350 PT	€19,300

Course Name	Course Type	Contact Email	Duration	Closing Date	Tuition fees, per annum*	
EUNon-EU						
School of Law						
Criminology, Criminal Justice and Human Rights	LLM	lawpostgrad@universityofgalway.ie	1 Yr FT; 2 Yrs PT	Continuous basis	€8,650 FT; €4,350 PT	€20,400
International and Comparative Business Law	LLM	lawpostgrad@universityofgalway.ie	1 Yr FT; 2 Yrs PT	Continuous basis	€8,650 FT; €4,350 PT	€20,400
Law and Digital Innovation	LLM	lawpostgrad@universityofgalway.ie	1 Yr FT; 2 Yrs PT	Continuous basis	€8,650 FT; €4,350 PT	€20,400
LLB (Bachelor of Laws)	LLB	lawpostgrad@universityofgalway.ie	2 Yrs FT; 3 Yrs FT; 4 Yrs PT	Continuous basis	€8,150 FT; €7,900 FT; €6,000 PT	€18,800
LLM (General)	LLM	lawpostgrad@universityofgalway.ie	1 Yr FT; 2 Yrs PT	Continuous basis	€8,650 FT; €4,350 PT	€20,400
Centre for Disability Law and Policy						
International and Comparative Disability Law and Policy	LLM	lawpostgrad@universityofgalway.ie	1 Yr FT; 2 Yrs PT	Continuous basis	€8,650 FT; €4,350 PT	€20,400
Irish Centre for Human Rights						
Gender and Human Rights Law	LLM	lawpostgrad@universityofgalway.ie	1 Yr FT; 2 Yrs PT	Continuous basis	€8,650 FT; €4,350 PT	€20,400
International Criminal Law	LLM	lawpostgrad@universityofgalway.ie	1 Yr FT; 2 Yrs PT	Continuous basis	€8,650 FT; €4,350 PT	€20,400
International Human Rights	LLM	lawpostgrad@universityofgalway.ie	1 Yr FT; 2 Yrs PT	Continuous basis	€8,650 FT; €4,350 PT	€20,400
International Migration and Refugee Law and Policy	LLM	lawpostgrad@universityofgalway.ie	1 Yr FT; 2 Yrs PT	Continuous basis	€8,650 FT; €4,350 PT	€20,400
Peace Operations, Humanitarian Law and Conflict	LLM	lawpostgrad@universityofgalway.ie	1 Yr FT; 2 Yrs PT	Continuous basis	€8,650 FT; €4,350 PT	€20,400
Transitional Justice, Human Rights and Conflict	LLM	lawpostgrad@universityofgalway.ie	1 Yr FT; 2 Yrs PT	Continuous basis	€8,650 FT; €4,350 PT	€20,400

- Under 'Closing Date', Continuous basis=this course has no set closing date. Offers are made on a continuous basis.
- Under 'Duration', FT=Full-Time, PT=Part-Time.
- Under 'Non-EU Fees', N/A=Not Applicable.
- Tuition fees per annum are listed here. A student levy (€140 for 2026/27) is also payable.
- Any new courses introduced post-printing of this prospectus will be listed here:
www.universityofgalway.ie/newcourses.
- Fees quoted are per annum. For course durations greater than 1 year, the continuing years will be subject to a 2% price increase per annum.

Course Finder



* Fees are correct at the time of going to print, but are subject to change (errors and omissions excepted).



Aisling

“

The modules and insight from the lecturers opened my eyes to a whole new level. To be a member of a small class, we all encouraged each other to develop the best versions of ourselves. From field trips to class competitions, there was never a dull day for the MSc class!

Aisling McCauley

MSc in Business & Hospitality,
Food & Beverage Operations
Manager, The Ritz-Carlton,
Washington D.C.

“

A portrait of Nagur Gali, a man with dark hair and a beard, wearing glasses and a light blue button-down shirt. He is smiling slightly and looking towards the camera. The background is a wooden wall.

Nagur

My time at the University of Galway was both transformative and inspiring. The exceptional faculty, engaging courses, and inclusive student community challenged me to reach my full potential—both academically and personally.

Outside the classroom, campus life was vibrant and full of opportunities to get involved, meet new people, and develop new skills.

Studying in Galway, with its warm community, rich cultural scene, and stunning natural beauty, created the perfect environment to learn and grow.

This experience not only gave me the tools and confidence to pursue my career goals but also connected me to a global network of fellow alumni I'm proud to be part of.

Nagur Gali
MSc Digital Marketing

Studying the BCL Law, Criminology, and Criminal Justice deepened my passion for justice and human rights. Progressing to the LLM Criminology, Criminal Justice, and Human Rights felt like a natural next step. Now, as a Knowledge Management and Legal Researcher, I feel both prepared and inspired.

Emily Donnellan
LLM (Criminology, Criminal Justice and Human Rights)

“

A portrait of Emily Donnellan, a woman with dark hair, wearing a white ribbed sweater and a black skirt. She is smiling and has her arms crossed. The background is a dark red wooden door.

Emily

College of Medicine and Health

The College of Medicine and Health at University of Galway brings together four dynamic Schools: the School of Allied and Community Health, the School of Medicine, the School of Nursing, Midwifery and Evidence Science, and the School of Pharmacy and Medical Sciences.

Across these Schools, we offer one of Ireland's most extensive and forward-looking portfolios of postgraduate programmes. The College has a vibrant research community with strategic research priorities that respond to the needs of some of the greatest health challenges facing society and the economy globally, including age-related conditions, cancer, chronic diseases, infection, and mental health.

Our programmes welcome graduates from a broad range of academic and professional backgrounds — not only those with prior health qualifications. With a strong emphasis on flexibility, we offer part-time, blended, and online options that support learners at any stage of their careers to combine study with advancing their expertise. Full-time pathways are also available.



Course Name	Course Type	Contact Email	Duration	Closing Date	Tuition fees, per annum* EUNon-EU	
School of Allied and Community Health						
Applied Multilingualism	MSc	stanislava.antonijevic@universityofgalway.ie	1 Yr FT; 2 Yrs PT	Continuous basis	€8,400 FT; €4,350 PT	€17,800
Childhood Speech, Language and Communication Needs	MSc	c.carroll@universityofgalway.ie marypat.omalley@universityofgalway.ie	1 Yr FT; 2 Yrs PT	16 August 2026	€8,400 FT; €4,350 PT	€17,800
Health Promotion	MA, PDip	hpinfo@universityofgalway.ie stacey.gibbons@universityofgalway.ie	1 Yr FT	Continuous basis	€8,400 FT MA; €7,250 FT PDip	€19,000 FT MA €15,000 FT PDIP
Podiatric Medicine (Pre-Registration)	MSc	preregpodmed@universityofgalway.ie	2 Yrs	Continuous basis	€12,700	€24,750
School of Medicine						
Applied Clinical Data Analytics	MSc	clinicaldataanalytics@universityofgalway.ie	1 Yr FT; 2 Yrs PT	Continuous basis	€9,150 FT; €4,600PT	€24,000 FT
Cellular Manufacturing and Therapy	MSc	cynthia.coleman@universityofgalway.ie	1 Yr FT	Continuous basis	€9,250	€27,500
Clinical Education	MHS, PDip	postgradhealth@universityofgalway.ie	1 Yr FT; 1 Yr FT, 2 Yrs PT	Continuous basis	€6,350 FT MHS, PDip; €3,250 PT PDip	€10,200 FT MHS, PDip; €5,100 PT PDip
Clinical Research	MSc	clinicalresearch@universityofgalway.ie	1 Yr FT; 2 Yrs PT	Continuous basis	€9,400 FT; €5,600 PT	€19,900 FT
Exercise Physiology and its Application in Therapy	MSc	ananya.gupta@universityofgalway.ie	1 Yr FT; 2 Yrs PT	Continuous basis	€9,400 FT; €5,100 PT	€18,800 FT
Exercise Physiology and Rehabilitation	MSc	ananya.gupta@universityofgalway.ie	1 Yr FT	Continuous basis	€9,400	€18,800
Healthcare Simulation and Patient Safety	MSc, PDipSc	paul.oconnor@universityofgalway.ie angela.odea@universityofgalway.ie	2 Yrs FT; 1 Yr FT	Continuous basis	€5,850 MSc, PDipSc	€9,750 MSc, PDipSc
Interventional Cardiovascular Medicine	MSc	kateryna.prykhodko@universityofgalway.ie	1 Yr FT	Continuous basis	€11,200	€22,500
Multidisciplinary Radiology	MSc, PDip	alanna.stanley@universityofgalway.ie	1 Yr FT; 2 Yrs PT	Continuous basis	€9,400 FT MSc; €4,850 PT MSc; €6,350 FT PDip; €3,300 PT PDip	€18,800 FT MSc; €9,400 PT MSc; €12,700 FT PDip; €6,350 PT PDip
Regenerative Medicine	MSc	linda.howard@universityofgalway.ie	1 Yr FT	Continuous basis	€9,250	€27,500
Surgery	MCh	micheal.newell@universityofgalway.ie	1 Yr FT; 2 Yrs PT	Continuous basis	€8,650 FT; €4,350 PT	€17,300 FT; €8,650 PT
Preventive Medicine and Cardiovascular Health Suite						
Cardiac Rehabilitation	PgCert	jennifer.jones@universityofgalway.ie	1 Semester FT	9 December 2026 (for entry Jan 2027)	€3,300	€6,350
Cardiovascular and Pulmonary Rehabilitation	MSc	jennifer.jones@universityofgalway.ie	1 Yr FT	Continuous basis	€9,400	€18,800
Diabetes	MSc	derek.okeeffe@universityofgalway.ie	1 Yr FT; 2 Yrs PT	Continuous basis	€9,400 FT; €4,850 PT	€18,800 FT; €9,400 PT
Diabetes Professional Credit Award	PCA	eva.flynn@universityofgalway.ie	6 Months PT	16 August 2026	€1,250	€2,300
Obesity	MSc	francis.finucane@universityofgalway.ie	1 Yr FT; 2 Yrs PT	Continuous basis	€9,400 FT; €4,850 PT	€18,800 FT; €9,400 PT
Preventive Cardiology	MSc	jennifer.jones@universityofgalway.ie	1 Yr FT	Continuous basis	€9,400	€18,800

Course Name	Course Type	Contact Email	Duration	Closing Date	Tuition fees, per annum*	
					EU	Non-EU
School of Nursing, Midwifery and Evidence Science						
Evidence-Based Future Healthcare	MSc	futureevidencemsc@universityofgalway.ie	1 Yr FT; 2 Yrs PT	31 July 2026	€10,200 FT; €5,250 PT	€18,300 FT; €9,500 PT
Nursing: Acute Medicine	MHSc, PDip	sinead.hahessy@universityofgalway.ie	2 Yrs FT; 1 Yr FT	30 June 2026	€7,900 Yr 1; €3,550 Yr 2	€18,300
Midwifery: Advanced Practice Midwifery	MSc, PDip	heather.helen@universityofgalway.ie	2 Yrs PT;	Continuous basis	€5,860	€14,300
Nursing: Advanced Practice Nursing	MSc, PDip	lisa.l.glynn@universityofgalway.ie	2 Yrs PT;	Continuous basis	€5,860	€14,800
Nursing: Children's Palliative and Complex Care	MHSc, PDip	deirdre.fitzgerald@universityofgalway.ie	2 Yrs FT; 1 Yr FT	30 June 2026	€10,200 Yr 1; €5,100 Yr 2	€18,300
Nursing: Diabetes	MHSc, PDipHSc	noreen.kilkenny@universityofgalway.ie	2 Yrs FT; 1 Yr FT	30 June 2026	€7,900 Yr 1; €3,550 Yr 2	€17,800
Nursing: Education	MHSc	brona.mooney@universityofgalway.ie	2 Yrs PT	31 May 2026	€7,650	€18,300
Nursing: Education	PDip	brona.mooney@universityofgalway.ie	1 Yr FT	31 May 2026	€5,850	€16,300
Nursing: Emergency Care	MHSc, PDip	peter.carr@universityofgalway.ie	2 Yrs FT; 1 Yr FT	30 June 2026	€7,900 Yr 1; €3,650 Yr 2	€18,300
Nursing: Gerontology	MHSc, PDip	nursing.midwifery@universityofgalway.ie	2 Yrs FT; 1 Yr FT	30 June 2026	€7,900 Yr 1; €3,300 Yr 2	€18,300
Nursing: Intensive Care	MHSc, PDip	ann.sheehan@universityofgalway.ie	2 Yrs FT; 1 Yr FT	30 June 2026	€7,900 Yr 1; €3,550 Yr 2	€18,300
Nursing: Midwifery	HDip	patricia.healy@universityofgalway.ie	80 Weeks	Check website	€15,437	NA
Nursing: Nurse/Midwife Prescribing	PgCert	lisa.l.glynn@universityofgalway.ie	6 Months	Continuous basis	€2,930	€13,526
Nursing: Oncology and Haematology	MHSc, PDip	maura.dowling@universityofgalway.ie	2 Yrs FT; 1 Yr FT	30 June 2026	€7,900 Yr 1; €3,550 Yr 2	€18,300
Nursing: Perioperative	MHSc, PDip	elaine.e.ohara@universityofgalway.ie	2 Yrs FT; 1 Yr FT	30 June 2026	€7,900 Yr 1; €3,550 Yr 2	€18,300
Nursing: Public Health Nursing	MHSc	nursing.midwifery@universityofgalway.ie	Year 1 FT; Year 2 PT	Check website	€8,040 Yr 1; €4,350 Yr 2	NA

- Under 'Closing Date', Continuous basis=this course has no set closing date. Offers are made on a continuous basis.
- Under 'Duration', FT=Full-Time, PT=Part-Time.
- Under 'Non-EU Fees', N/A=Not Applicable.
- Tuition fees per annum are listed here. A student levy (€140 for 2026/27) is also payable.
- Any new courses introduced post-printing of this prospectus will be listed here: **www.universityofgalway.ie/newcourses**.
- Fees quoted are per annum. For course durations greater than 1 year, the continuing years will be subject to a 2% price increase per annum.

* Fees are correct at the time of going to print, but are subject to change (errors and omissions excepted).

Course Finder





Reginald

“
Studying the MSc in Applied Clinical Data Analytics at University of Galway has been a game-changer for me. As a Clinical Tutor in Anaesthetics, I use the skills I gained from the course every day – whether it's in research, mentoring, or working on projects like the ESICM Datathon.

The programme gave me the confidence and tools to dive into clinical data, make sense of complex datasets, and apply analytics in a way that actually improves research and patient care. The blend of practical applications with a strong theoretical foundation meant that I wasn't just learning concepts – I was developing real-world skills that I could immediately put to use.

Since completing the MSc Applied Clinical Data Analytics, I've found myself approaching problems differently. I now have a structured way to analyse clinical data, which has allowed me to contribute more effectively to research and even develop new publications using digital resources and advanced analytical techniques. These skills have also been invaluable in collaborating with multidisciplinary teams, where being able to interpret and communicate data-driven insights makes a real difference.

Beyond the technical knowledge, what stood out to me was the flexibility of the programme. Balancing clinical work with

academic study is never easy, but the course was designed in a way that made it manageable – even enjoyable. The lecturers were incredibly supportive, and learning alongside other healthcare professionals meant that discussions were always relevant to real-world challenges.

For anyone in healthcare who wants to bridge the gap between clinical practice and data science, I can't recommend this course enough. It's practical, relevant, and genuinely impactful, giving you the tools to make a difference in both research and patient care.

Dr Reginald Caldecott
MSc in Applied Clinical Data Analytics

Dr RM Caldecott

College of Science and Engineering

The College of Science and Engineering at the University of Galway offers an exciting and interdisciplinary blend of research, innovation, and education across the full range of science and engineering areas.

From studying the stars, to how molecules interact, to delivering life-saving medical devices and cleaner energy, our mission is to produce impactful research and innovation, and to provide an excellent student-centred and inclusive educational experience.

Our interdisciplinarity enables a transdisciplinary approach to learning which cultivates expertise that creates, discovers, and is agile and distinct. We strive for excellence in our teaching programmes, so that we are a destination of choice for science and engineering, at all levels.

Our postgraduate programmes are progressive, diverse and research-led. Drawing on the distinctive strengths of our region in areas such as medical technologies, marine ecology,

data/ICT and enabling technologies, we work with business and industry to provide graduates with the skills and knowledge to drive innovation, economic growth and research, and to address global concerns and challenges.

Our programmes empower students to develop critical thinking, employability and leadership, as well as to fulfil their potential as the next generation of change-makers, delivering real societal impact.

Our vision is to support ambition in education, research and innovation; to provide pioneering and competitive programmes, and to drive excellence. We do this through state-of-the-art, research-informed, transdisciplinary curricula that embed sustainability, contemporary evidence-based teaching methods, and interdisciplinary strengths. This empowers our students to achieve career success and to become valuable contributors to society.



Athena
Swan
Silver Award

Course Name	Course Type	Contact Email	Duration	Closing Date	Tuition fees, per annum* EUNon-EU	
Computer Science and Software Engineering						
Computer Science—Adaptive Cybersecurity	MSc	MScCS-ACS@universityofgalway.ie	1 Yr FT	Continuous basis	€8,900	€28,500
Computer Science—Artificial Intelligence	MSc	MScCS-AI@universityofgalway.ie	1 Yr FT	Continuous basis	€8,900	€28,500
Computer Science—Artificial Intelligence (online)	MSc	jamal.nasir@universityofgalway.ie	2 Yrs PT	Continuous basis	€4,770	€4,770
Computer Science—Artificial Intelligence for Professionals	PgCert	patrick.mannion@universityofgalway.ie	1 Yr PT	Continuous basis	€5,050	€5,050
Computer Science—Data Analytics	MSc	MScCS-DA@universityofgalway.ie	1 Yr FT	Continuous basis	€8,900	€28,500
Software Design and Development	MSc, MSc (External), HDip	sam.redfern@universityofgalway.ie jawad.manzoor@universityofgalway.ie	2 Yrs FT; 1 Yr FT	Continuous basis	€6,600 MSc, HDip; €7,250 MSc Ext	€18,300 MSc, HDip; €18,000 MSc Ext
Practical AI for Software Developers	PDip	ICTskills@universityofgalway.ie	1 Year PT	Continuous basis	€4,100	NA
Software Development, Cloud Computing and DevOps	PG Dip	ictskills@universityofgalway.ie	1 Year FT	Continuous basis	€8,150	NA
Engineering, Physics, and Enabling Technologies						
Biomedical Engineering	ME	biomedeng@universityofgalway.ie	9 Months FT	Continuous basis	€6,600	€28,500
Biomedical Engineering	MSc	biomedeng@universityofgalway.ie	1 Yr FT	Continuous basis	€8,900	€28,500
Civil Engineering	ME	civilengineering@universityofgalway.ie	9 Months FT	Continuous basis	€6,600	€28,500
Civil Engineering	MSc	civilengineering@universityofgalway.ie	1 year FT	Continuous basis	€8,900	€28,000
Construction Innovation	PDip	jamie.goggins@universityofgalway.ie	1 Yr PT	Continuous basis	€7,900	N/A
Construction Innovation	MSc	jamie.goggins@universityofgalway.ie	1 Yr FT; 2 Yrs PT	Continuous basis	€8,900 FT; €4,500 PT	€28,500
Electrical and Electronic Engineering	ME	mary.costello@universityofgalway.ie	9 Months FT	Continuous basis	€6,600	€28,500
Electronic and Computer Engineering	ME	martin.glavin@universityofgalway.ie	9 Months FT	Continuous basis	€6,600	€28,500
Energy Systems Engineering	MSc	energyeng@universityofgalway.ie	1 Year FT	Continuous basis	€8,900	€28,500
Engineering Management	MSc	kathryn.cormican@universityofgalway.ie	1 Yr FT	Continuous basis	€8,900	€28,500
Intelligent Robotics	MSc	brian.deegan@universityofgalway.ie	1 Yr FT	Continuous basis	€8,900	€28,500
Energy Systems Engineering	ME	EnergyEng@universityofgalway.ie	9 Months FT	Continuous basis	€6,600	€28,500
Mechanical Engineering	ME	eoin.king@universityofgalway.ie	9 Months FT	Continuous basis	€6,600	€28,500
Mechanical Engineering	MSc	kevin.moerman@universityofgalway.ie	1 Yr FT	Continuous basis	€8,900	€28,000
Medical Electronics and Digital Health	MSc	edward.jones@universityofgalway.ie	1 Yr FT	Continuous basis	€8,900	€28,500
Medical Physics	MSc	christoph.kleefeld@universityofgalway.ie	1 Yr FT	Continuous basis	€8,900	€34,500
Modern Methods of Construction	PG Cert	jamie.goggins@universityofgalway.ie	1 Yr PT	Continuous basis	€4,350	N/A
Occupational and Environmental Health and Safety	MSc, HDip	joan.walsh@universityofgalway.ie	1 Yr FT; 2 Yrs PT	Continuous basis	€8,900 FT MSc; €7,400 FT HDip; €4,500 PT MSc	€28,500 FT MSc; €16,300 FT HDip
Occupational Health and Safety Top-Up	MSc	joan.walsh@universityofgalway.ie	1 Yr PT	Continuous basis	€4,600	N/A
Wind Energy Engineering	MSc	pedram.masjedi@universityofgalway.ie	1 Yr FT	Continuous basis	€8,900	€28,500

Course Name	Course Type	Contact Email	Duration	Closing Date	Tuition fees, per annum* EU Non-EU	
Entrepreneurship and Innovation						
AgInnovation	MSc	john.breslin@universityofgalway.ie	1 Yr FT	Check website	€8,060	€27,000
BioInnovation	MSc, PDip	info@bioinnovate.ie	10 Months FT	Check website	€8,750 MSc; €3,800 PDip	€28,000 MSc; €8,650 PDip
TechInnovation	MSc	john.breslin@universityofgalway.ie	1 Yr FT	Continuous basis	€8,900	€28,500
Life and Biomedical Sciences and Chemistry						
Biomedical Science	MSc	mary.nifhlathartaigh@universityofgalway.ie	1 Yr FT, 2 Yrs FT	Continuous basis	€8,900	€28,500
Biotechnology	MSc	sheila.donnelly@universityofgalway.ie	1 Yr FT 2 Yrs FT	Continuous basis	€8,900	€28,500
Neuropharmacology	MSc	andrea.kwakowsky@universityofgalway.ie	1 Yr FT	Continuous basis	€8,900	€28,500
Toxicology	MSc	howard.fearnhead@universityofgalway.ie	1 Yr FT	Continuous basis	€8,900	€28,500
Mathematics, Bioinformatics and Computational Genomics						
Biomedical Genomics	MSc	lars.jermin@universityofgalway.ie	1 Yr FT;	Continuous basis	€8,900	€28,500
Genomics Data Science	MSc	lars.jermin@universityofgalway.ie	1 Yr FT	Continuous basis	€8,900	€28,500
Health Data Science	MSc	MSC.HDS@universityofgalway.ie	1 Yr FT	Continuous basis	€9,150	€27,500
Mathematics	MSc	mark.howard@universityofgalway.ie	1 Yr FT	Continuous basis	€7,900	€19,300
Medical Technology Regulation and Quality Assurance						
Medical Technologies Regulatory Affairs and Quality	Cert	olivia.mcdermott@universityofgalway.ie mary.butler@atu.ie	1 Yr PT	Continuous basis	Check website	Check website
Medical Technology Regulatory Affairs and Quality	HDip	olivia.mcdermott@universityofgalway.ie mary.butler@atu.ie	2 Yrs PT	Continuous basis	Check website	Check website
Medical Technologies Regulatory Affairs and Operations	Cert	olivia.mcdermott@universityofgalway.ie mary.butler@atu.ie	1 Yr PT	Continuous basis	Check website	Check website
Medical Technology Regulatory Affairs	MSc	olivia.mcdermott@universityofgalway.ie mary.butler@atu.ie	2 Yrs PT	Continuous basis	Check website	Check website
Science of Sustainability						
Agrifood Sustainability and Technology	MSc	luis.quiroz@universityofgalway.ie	1 Yr FT	Continuous basis	€8,900	€28,500
Biodiversity & Land Use Planning	MSc	gesche.kindermann@universityofgalway.ie	2 Yrs PT; 2-6 Yrs Modular	Continuous basis	€8,900	N/A
Climate Change, Agriculture and Food Security	MSc	charles.spillane@universityofgalway.ie	1 Yr FT	Continuous basis	€8,900	€28,500
Environmental Leadership	MSc	gesche.kindermann@universityofgalway.ie caitrona.carlin@universityofgalway.ie	1 Yr FT	Continuous basis	€8,900	€28,500
Marine & Freshwater Resources: Management	MSc	liam.morrison@universityofgalway.ie tiernan.henry@universityofgalway.ie	1 Yr FT	Continuous basis	€8,900	€28,500
Ocean, Atmosphere and Climate	Structured Research Master's	peter.croot@universityofgalway.ie jurgita.ovadnevaite@universityofgalway.ie	1 Yr FT	Continuous basis	€8,900	€28,500
Sustainable Environments	MSc	caitrona.carlin@universityofgalway.ie	1 Yr FT	Continuous basis	€8,900	€28,500

- Under 'Closing Date', Continuous basis=this course has no set closing date. Offers are made on a continuous basis.
- Under 'Duration', FT=Full-Time, PT=Part-Time.
- Under 'Non-EU Fees', N/A=Not Applicable.
- Tuition fees per annum are listed here. A student levy (€140 for 2026/27) is also payable.
- Any new courses introduced post-printing of this prospectus will be listed here:

www.universityofgalway.ie/newcourses.

- Fees quoted are per annum. For course durations greater than 1 year, the continuing years will be subject to a 2% price increase per annum.

* Fees are correct at the time of going to print, but are subject to change (errors and omissions excepted).

Course Finder



Natalia

“

I always had a keen interest in the environment and climate change, which is what led me to choose a Master's in Environmental Leadership at the University of Galway. It was a comprehensive and interesting course with a wide range of modules focusing on improving leadership skills, environmental knowledge and problem-solving. It supplemented my undergraduate degree in Earth and Ocean Science very well. The lecturers were very passionate about their topic areas and the lectures were

always highly engaging, with the small class sizes allowing us to participate in some meaningful group discussions. I felt this master's degree prepared me for a career in the environmental sector, covering a wide range of environmental topics such as environmental impact assessment, project management, ecological skills and ESG. I am grateful for all the skills and knowledge I gained from this master's during my time at the University of Galway.

Natalia Stolarska,
Environmental Scientist, MKO.

Online and Blended Learning Courses

University of Galway has successfully provided part-time study opportunities for students for over 50 years. With postgraduates today requiring more flexible study options, the university has developed a range of online and blended learning study options. These are in a variety of subject areas and are designed for people who need to fit study around their professional and personal commitments.

The listing below refers to the courses available in each subject area. Check www.universityofgalway.ie/onlinelearning for updates. This website also lists other online professional, part-time, and evening courses, with details available from our Centre for Adult Learning and Professional Development.

Arts, Social Sciences, and Celtic Studies/An tAcadamh

- Adolescent Health, MSc
- Adolescent Health, PgCert
- Child, Youth and Community, MA
- Cleachtas Gairmiúil sna Meáin, MA
- Creative Technologies and Emerging Media (PG Cert)
- An Ghaeilge Fheidhmeach, Ard-Diplóma
- Léann an Aistriúcháin, MA, Teastas Iarchéime
- Léann Teanga, MA

Healthcare

- Cardiac Rehabilitation, PgCert
- Cardiovascular and Pulmonary Rehabilitation, MSc
- Childhood Speech, Language, and Communication Needs, MSc
- Clinical Education, Master's, PDip
- Clinical Research, MSc
- Diabetes, MSc
- Diabetes, Professional Credit Award
- Evidence-Based Future Healthcare (MSc)
- Exercise Physiology and its Application in Therapy, MSc, PDip
- Exercise Physiology and Rehabilitation, MSc
- Healthcare Simulation and Patient Safety, MSc, PDip
- Interventional and Cardiovascular Medicine, MSc
- Multidisciplinary Radiology, MSc/PDip
- Obesity, MSc
- Preventive Cardiology, MSc
- Surgery, MCh

Information Technology

- Computer Science—Artificial Intelligence for Professionals, PgCert
- Computer Science—Artificial Intelligence, MSc (part-time)
- Practical AI for Software Developers (Prof. Diploma)
- Software Development, Cloud Computing and DevOps (PG Diploma)

Nursing and Midwifery Studies

- Midwifery, HDip
- Midwifery: Advanced Practice Midwifery, MSc, PDip
- Nurse/Midwife Prescribing, Certificate
- Nursing (Acute Medicine), MHSc, PDip
- Nursing (Advanced Practice Nursing), MSc, PDip
- Nursing (Children's Palliative and Complex Care), MHSc, PDip
- Nursing (Diabetes), MHSc, PDip
- Nursing (Education), PDip
- Nursing (Emergency Care), MHSc, PDip
- Nursing (Gerontology), MHSc, PDip
- Nursing (Intensive Care), MHSc, PDip
- Nursing (Oncology and Haematology), MHSc, PDip
- Nursing (Perioperative), MHSc, PDip
- Nursing Education, Master's
- Nursing (Public Health Nursing), MHSc, PDip

The School of Nursing and Midwifery offers a range of 10-credit modules. These can be undertaken as stand-alone modules (Professional Credit Awards/Micro-credentials) and can provide part credit toward specialist programmes. To discuss these options please contact Dr Duygu Sezgin:

t. +353 91 49 3344
e. duygu.sezgin@universityofgalway.ie
w. universityofgalway.ie/pca/pca.html

Science and Technology

- AgInnovation, MSc
- Biomedical Science, MSc
- Cellular Manufacturing and Therapy, MSc, PDip, PgCert
- Construction Innovation (PDip)
- Medical Technology Regulatory Affairs, MSc



Conversion Courses

Graduates may be eligible for courses offered through other colleges and can search for programmes across colleges. For example, an Arts graduate could choose to apply to a Law course (e.g., LLB) or a Business course (e.g., HDip [Business Studies]).

The listings here refer to 'interdisciplinary' courses that welcome applicants from various colleges.

www.universityofgalway.ie/conversion

College of Arts, Social Sciences and Celtic Studies/An tAcadamh

- Applied Behaviour Analysis (MSc)
- Clinical Neuroscience (MSc)
- Fine Art (Post Baccalaureate [HDip])
- Journalism (MA)
- Léann an Aistriúchán (MA)
- Psychology—Full (HDipA)
- Public Advocacy and Activism (MA)

College of Business, Public Policy and Law

- Business Analytics (MSc)
- Business Studies (HDip)
- Corporate Finance (MSc)
- Digital Marketing (MSc)
- Financial Analysis (HDip)
- Global Environmental Economics (MSc)
- Health Economics (MSc)
- Human Resource Management (MSc)
- Information Systems Management (MSc)
- International and Comparative Disability Law and Policy (LLM)
- International Finance (MEconSc)
- International Human Rights (LLM)
- International Management (MSc)
- International Migration and Refugee Law and Policy (LLM)
- LLB (Bachelor of Laws)
- Management and Sustainability (MSc)
- Marketing Management (MSc, full-time or part-time)
- Master of Business Administration [MBA]
- Peace Operations, Humanitarian Law and Conflict (formerly [International Peace Support Operations]) (LLM)
- Strategy, Innovation and People Management (MSc)
- Sustainability Leadership (MSc)

College of Medicine and Health

- Applied Multilingualism (MSc)
- Cellular Manufacturing and Therapy (MSc)
- Clinical Research (MSc)
- Diabetes (Medicine) (MHSc)
- Diabetes (Professional Credit Award)
- Evidence-Based Future Healthcare
- Exercise Physiology and its Application in Therapy (MSc)
- Healthcare Simulation & Patient Safety (MSc)
- Health Promotion (MA/PDip)
- Regenerative Medicine (MSc/PDip)

College of Science and Engineering

- AgInnovation (MSc)
- Biodiversity and Land Use Planning (MSc)
- Biomedical Science (MSc)
- Climate Change, Agriculture and Food Security (MSc)
- Computer Science—Artificial Intelligence for Professionals (PgCert)
- Construction Innovation (PDip)
- Enterprise Systems (MApplSc)
- Environmental Leadership (MSc)
- Health Data Science (MSc)
- Medical Physics (MSc)
- Medical Technologies Regulatory Affairs and Operations [Online])
- Medical Technology Regulatory Affairs and Quality (Higher Diploma)
- Modern Methods of Construction (PG Cert)
- Neuropharmacology (MSc)
- Occupational and Environmental Health & Safety (MSc/HDipAppSc)
- Software Design and Development (HDip)
- Sustainable Environments (MSc)
- TechInnovation (MSc)
- Toxicology (MSc)

Part-time Study Options

University of Galway offers a wide range of part-time courses at various different levels for prospective students.

7 8

Adult Learning part-time courses

Certificate, Diploma, Degree,
Higher Diploma

For over 50 years, the Centre for Adult Learning & Professional Development has been offering a wide variety of professional, part-time and flexible courses in Business and Management, Science and Technology, Arts, Humanities and Social Sciences at Foundation, Certificate, Diploma, Degree, and Masters levels.

If you have had a gap in your education or wish to upskill for employment, we have a part-time, flexible course for you.

**Find out more about
Adult Learning**



8 9

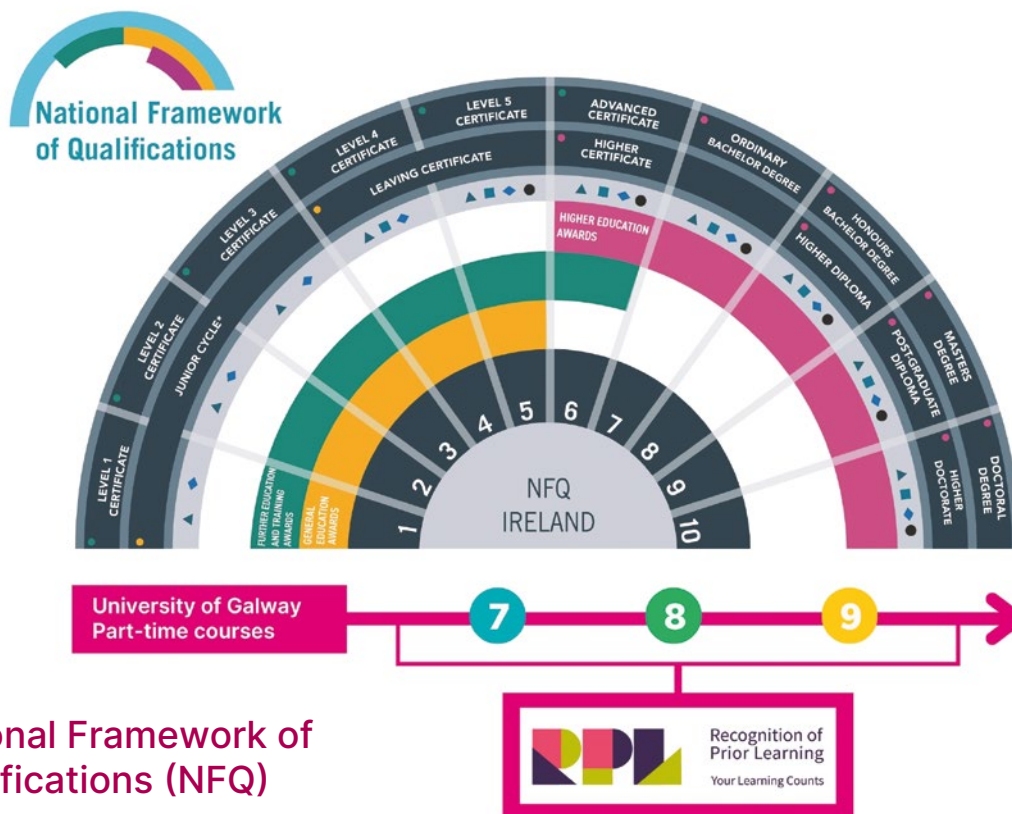
Postgraduate part-time courses

PG Certificate/Diploma
and Masters

The University of Galway is now offering many of its full-time taught postgraduate courses on a part-time basis, in blended or online learning format.

**Find out more about
Postgraduate part-time**





National Framework of Qualifications (NFQ)



Micro-credentials

Micro-credentials are small, accredited courses designed to meet the demands of learners, enterprise and organisations. They provide learning opportunities which offer a highly flexible, bite-sized and accessible way of upskilling and reskilling.

Learners may choose to undertake an individual micro-credential or continue on studying, advancing their skills and knowledge over time. Some micro-credentials offer pathways, allowing learners the opportunity to stack micro-credentials into a larger credential or award.

Find out more about
Micro-credentials



Springboard+ courses Government funded courses

Springboard+ is a Government initiative offering free and heavily subsidised courses at certificate, degree, and masters level leading to qualifications in areas where there are employment opportunities in the economy. These areas include ICT, engineering, green skills, manufacturing and construction, among many others.

Find out more about
Springboard+



Recognition of
Prior Learning
Your Learning Counts



Recognition of Prior Learning RPL

If you don't meet the specific entry requirements for a part-time course (at any level) but feel you have the relevant knowledge and skills, you can apply for Recognition of Prior Learning (RPL).

RPL is a process by which prior learning is formally valued. It is a means by which prior learning is identified, assessed, and recognised by an educational institution as part of its programmes, courses, and/or modules on the National Framework of Qualifications (NFQ). This makes it possible for an individual to build on learning achieved and to be rewarded for it.

Find out more about
Recognition of Prior Learning



Springboard+ is co-funded by
the Government of Ireland
and the European Union.



Rialtas na hÉireann
Government of Ireland



Arna chomhchistiú ag
an Aontas Eorpach
Co-funded by the
European Union

HEA | HIGHER EDUCATION AUTHORITY
AN tUdaráis um Ard-Oideachas

Micro-credentials Listing 2025–26

Micro-credential	Delivery	Credits	NFQ Level	Start Date
Agriculture & Food Systems				
Product Development, Validation and Authorisation	Online	5	9	Semester 2
Business, Management and Law				
Finance for Non Financial Managers	Online	5	8	Sem 1 & 2
Entertainment Law	Online	5	8	Semester 1
Business Law II	Online	5	8	Semester 2
Ethics and law for Artificial Intelligence	Online	5	9	Semester 2
Inclusive Businesses, co-created with and for people with communication difficulties	Blended	5	9	Semester 1
Project Management	Online	10	8	Semester 2
Ageing, Inequalities and Rights	Online	5	9	Semester 2
Healthcare & Medicine				
Mental Health Promotion	Blended	10	9	Semester 2
Promoting Healthy Behaviours	Blended	10	9	Semester 2
Promoting Health in the Workplace	Blended	10	9	Semester 2
Promoting Health in Preschools, Schools & Colleges	Blended	10	9	Semester 2
Management of Diabetic Foot Disease	Blended	10	9	Semester 2
Advanced Research Methods	Blended	10	9	Semester 1
Care of the Child & Family with Palliative / Complex needs	Blended	10	9	Semester 1
Clinical supervision: Supporting Continuing Professional Development	Blended	10	9	Semester 1
Recognising & Responding to Client Deterioration	Blended	10	9	Semester 1
Clinical Governance	Blended	10	9	Semester 2
Dementia care: Transforming Practice	Blended	10	9	Semester 2
High Dependency Maternity Care	Blended	10	9	Semester 2
Ultrasound Guided Peripheral Intravenous Cannulation	Blended	5	9	Semester 1
Insertion of a Midline Catheter with Ultrasound Technology	Blended	5	9	Semester 1
Inserting a Peripherally Inserted Central Catheter	Blended	5	9	Semester 2
Maternal Infant and Family Health	Blended	10	9	Semester 1
Teaching Effectively	Blended	10	9	Semester 1
Diabetes	Blended	10	9	Sem 1 & 2
Humanities & Languages				
Próiseas na Pleanála Teanga	Blended	5	7	Semester 1
Próiseas na Pleanála Teanga I	Blended	5	9	Semester 1
Próiseas na Pleanála Teanga II	Blended	5	9	Semester 2
An Anailís Sochtheangeolaíochta I	Blended	5	9	Semester 1
An Anailís Sochtheangeolaíochta II	Blended	5	9	Semester 2
An Caighdeán Oifigiúil	Blended	10	9	Semester 1
Aistriúchán Téacsanna 1	Online	5	9	Semester 1
Cúlra agus Comhthéacs na Gaeltachta	Blended	5	7	Semester 1
Éisteacht agus Labhairt 1 B1	Online	10	7	Semester 1
Irish for Beginners 1	On Campus	5	8	Sem 1 & 2
Léamh agus Scríobh 1 B1	Online	5	7	Semester 1
Scríobh agus Léamh 1	Online	5	7	Semester 2

Micro-credential	Delivery	Credits	NFQ Level	Start Date
Teanga an Ghnó	Online	5	8	Semester 2
Éisteacht & Labhairt 1	Online	10	7	Semester 2
Cruinnscriobh na Gaeilge 1	Blended	10	9	Semester 1
IT and Computer Science				
Future of Artificial Intelligence	Online	5	9	Semester 2
Data Analysis and Visualisation	Online	5	9	Semester 1
Machine Learning & Natural Language Processing	Online	5	9	Semester 1
Introduction to Artificial Intelligence	Online	5	9	Semester 1
Introduction to Programming in Python	Online	5	8	Semester 1
Societal Impact of Artificial Intelligence	Online	5	9	Semester 2
Quantum Programming Foundations	Online	5	8	Semester 1
Science and Engineering				
Green Labs Principles and Practice	Online	10	9	Semester 1
Sustainable Communities	Blended	5	8	Sem 1 & 2
Regulatory Compliance	Online	5	8	Semester 1
Green Hydrogen Technology, Design and Analysis	Online	5	9	Semester 2
Environmental Impact Assessment (Marine)	Online	10	9	Semester 2
Sustainability Planning in Construction	Blended	10	9	Semester 1
Innovation and Entrepreneurship	Blended	10	9	Semester 2
Digital Construction Technologies	Blended	10	9	Semester 2
Modern Methods of Construction	Blended	10	9	Semester 2
Passive House Designer	Blended	10	9	Semester 1
Manufacturing Technology	Online	5	8	Semester 1
Scalable Science, Technology & Innovation	Blended	5	8	Semester 2
Rapid Prototyping and Pilot Production	Blended	5	8	Semester 2
Enabling (Laser) Technology for Manufacturing	Blended	5	8	Semester 2
Enterprise Simulation for Digital Twinning	Online	5	8	Semester 1
Programming Sensors and Actuators	Blended	5	8	Semester 1
Robotics and Automated Systems	Blended	5	8	Semester 2
Materials Science & Processes	Blended	5	8	Semester 1
Design of Engineering Systems	Blended	5	8	Semester 2
The Crystallography and Mineralogy of Gemstones	Blended	5	7	Semester 2
Geology and Gemstones	Blended	5	7	Semester 1
Social, Behaviour and Welfare				
Consent, Sexual Violence and Harassment: Practitioner Skills & Practice	Blended	10	9	Sem 1 & 2
Teaching and Education				
Blended Learning and Teaching	Online	10	8	Semester 1
STEM Engagement Resources for Teachers	Online	10	9	Semester 1

The micro-credentials listing is updated regularly, please check our website for additional micro-credentials.

NB: Courses will only run if enough places are filled. Learners will be notified as soon as possible of any cancellations.

Research Studies

Our researchers are shaping the future.
Be inspired; be part of it.

University of Galway is committed to supporting the next generation of excellent researchers within a sustainable research ecosystem in key areas across: Arts, Social Sciences & Celtic Studies; Business, Public Policy & Law; Medicine and Health; and Science & Engineering.

Our strategic focus centres around four pillars:



Innovation for Health



Creativity, Culture & Society



Sustainable & Resilient Environments: Earth & Ocean



Transformative Data & AI

Thousands of great minds at the university are helping to shape the future through research and discovery. The following sections provide information on the breadth and depth of research currently underway at University of Galway. As a postgraduate student you could be part of this dynamic community. See yourself helping to advance innovation in disease prevention & management; exploring cultural practices across time periods around the world; leading the transition to a sustainable future & addressing global challenges through transformative data & AI.

The scope of our research here at University of Galway is far reaching. Join us and help shape a better future.

Research matters – join us in changing the world.

Research Programmes

Research study programmes (e.g., PhD, MD, Research Master's) are available across our four Colleges, in the following subject areas

- Accounting and Finance
- Anaesthesia
- Anatomy
- Applied Behaviour Analysis
- Applied Mathematics
- Archaeology
- Bacteriology
- Biochemistry
- Bioinformatics
- BioInnovation
- Biomedical Engineering
- Biomedical Engineering and Regenerative Medicine
- Biomedical Engineering Science
- Biomedical Science & Engineering
- Biostatistics
- Botany/Plant Science
- Business Information Systems
- Business, Public Policy and Law
- Cellular and Molecular Biology
- Celtic Studies/Léann Ceilteach
- Centre for Excellence in Teaching and Learning (CELT)
- Chemistry
- Child and Youth Research
- Children's Studies
- Civil Engineering
- Classics
- Creative Technologies
- Commerce
- Computer Science
- Creative Technologies
- Data Science Institute/Insight
- Digital Arts and Humanities
- Drama and Theatre Studies
- Earth and Ocean Sciences
- Economics
- Education
- Electrical and Electronic Engineering
- English
- Environmental Science
- Film Studies
- French
- General Practice
- Geography
- German
- Global Women's Studies
- Health Promotion
- Health Psychology Practice
- Health Sciences – Social Care
- History
- Industrial Engineering
- Insight Centre for Data Analytics
- Irish Studies
- Italian
- Key Enabling Technologies
- Latin American Studies
- Law
- Learning Sciences
- Marine Sciences
- Marketing
- Mathematics
- Mechanical & Biomedical Engineering
- Medicine
- Medieval Studies
- Medieval and Antiquity
- Microbiology
- Nua-Ghaeilge
- Nursing and Midwifery
- Obstetrics and Gynaecology
- Occupational Health and Hygiene
- Occupational Therapy
- Ocean, Atmosphere and Climate
- Old and Middle Irish
- Paediatrics
- Pathology
- Perception, Cognition and Action
- Pharmacology and Therapeutics
- Philosophy
- Physics
- Physiology
- Plant and Agribiosciences
- Podiatric Medicine
- Political Science and Sociology
- Population Health/Health Science Research
- Psychiatry
- Psychology
- Psychology and Health
- Radiology
- Regenerative Medicine
- Ryan Institute
- Sociology and Politics
- Spanish
- Spanish Studies
- Speech and Language Therapy
- Statistics
- Studio Art
- Surgery
- TechInnovation
- Texts, Contexts, Cultures
- Women's Studies
- Zoology

Scan the QR code below to see visit Research Programmes website; follow relevant links to see what study options are available in your subject area of interest:



Hardiman PhD Scholarships

The University's
Hardiman doctoral
scholarship scheme
celebrates 14 years of
success since the first
awards in 2011.

The Hardiman Scholarships are funded through a combination of generous university and college-level funding support. They offer opportunities for suitably qualified students to pursue full-time, fully funded structured PhD studies in one of the four colleges on topics aligned to the four research pillars in which the university offers leading expertise:

- Innovation for Health
- Creativity, Culture & Society
- Sustainable & Resilient Environments: Earth & Ocean
- Transformative Data & AI

The objective of the Hardiman Scholarships is to attract the best scholars to the University of Galway, with the determining criterion in awarding a Hardiman Scholarship being the quality of the applicant, nationally and internationally. We also ensure that at least one Hardiman Scholarship will be awarded to a candidate with a disability. Over the years, including 2025, around 3,600 excellent applicants have applied for a Hardiman Scholarship. This has resulted in the awarding of a prestigious Hardiman PhD Scholarship to 305 high-achieving individuals who have an appetite for the research world and creativity, who thrive on intellectual excitement, and who positively impact and shape the future for all in our society.

Find out more at:
universityofgalway.ie/hardiman-scholarships

“The Hardiman Scholarship programme promotes entrepreneurship and fosters an interdisciplinary culture by connecting its scholars from across the university. This helped me in my career as co-founder of a Digital Health start-up. My PhD ensures that I can maintain the highest level of scientific rigour throughout all company endeavours as we develop products for both EU and US markets.”

Emma Carr
Hardiman Scholarship Recipient

The Research Application Process

Applying for a research programme at University of Galway is a three-step process:

1. Find a supervisor/PhD project.
2. Review funding and scholarship opportunities.
3. Finally, apply online.

Step 1: Find a Supervisor/PhD Project

One of the most important parts of choosing a research programme is finding a supervisor who has relevant expertise in your area of interest. You can find potential supervisors and identify the key research interests of our academic staff and researchers by using our online search site: www.universityofgalway.ie/findasupervisor. This portal leads to profiles of researchers who are accepting PhD students. You can also, in this portal, insert a keyword to find a PhD project or supervisor name and then select 'accepting PhD students' as a filter on the left hand side of the portal. For example, inserting the keywords 'artificial

intelligence,' will return these results (partial screenshot shown, more entries will be displayed online). You can then export your results.

When you find a supervisor who, or a project that, aligns with your research interests, you should make contact with the relevant researcher to discuss matters further. They can also advise you on how to apply to become a University of Galway research student.

The search site links to University of Galway's Institutional Research System, which enables researchers and academic staff to maintain an

up-to-date CV and showcase their research expertise. For example, clicking on the hyperlink under Professor James McDermott's name in the profiles from the search returned on 'artificial intelligence' (see Fig. below) will bring you to their entry in the database.

This details the researcher's PhD projects, personal profile including research interests, and their research outputs and activities: all useful for you in deciding whether your proposed research aligns with their interests and capacities.

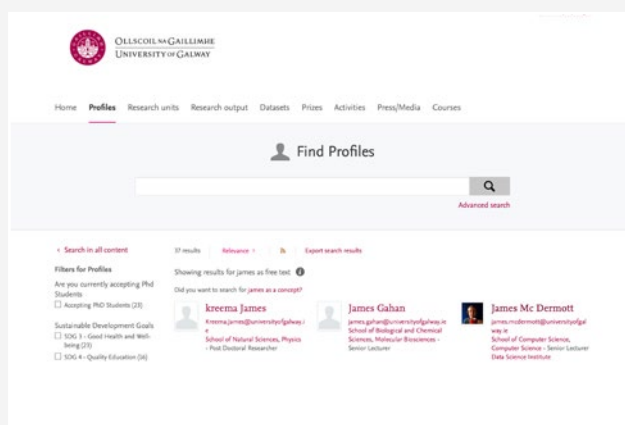


Fig. 1

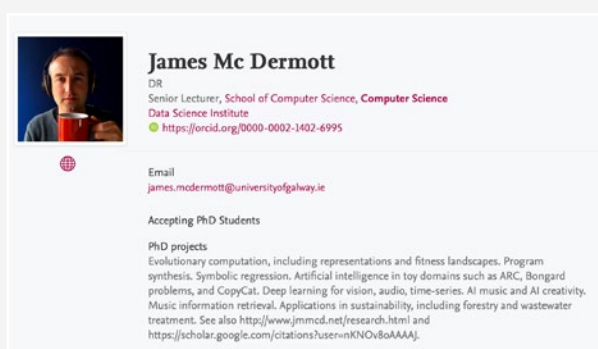


Fig. 2

Step 2: Funding and Scholarships

See page 36.

Step 3: Apply Online

The final step in the research application process, once you have found your supervisor and PhD project, and hopefully having secured funding, is to apply online: www.universityofgalway.ie/apply. For further details on how to apply, please see pages 38-39 of this prospectus.

Research Funding and Scholarships

External Scholarships

Research Ireland www.research.ie

Provides postgraduate funding to undertake a PhD programme in all disciplines, under the following schemes:

- Government of Ireland Postgraduate Scholarship Scheme: supports suitably qualified research master's and doctoral candidates pursuing or intending to pursue full-time research in any discipline.
- Employment-Based Postgraduate Programme: supports suitably qualified candidates in any discipline working in partnership with academia and industry while employed by an enterprise partner.
- Enterprise Partnership Programme: co-funds awardees to bring great research ideas into an enterprise with the support of a higher education institution.

Euraxess

<https://euraxess.ec.europa.eu/>

Provides a portal for researchers across Europe, with ability to search for jobs and funded PhD positions in Galway. Search for these by insertion of Ireland as a country and PhD positions in the 'Positions' filter of the 'Jobs & Opportunities' drop-down menu.

Wellcome Trust

<http://wellcome.ac.uk/funding>

This funding scheme supports individuals, teams, resources, seed ideas, places, and major initiatives in these areas: biomedical science, population health, product development and applied research, humanities and social science, public engagement, and creative industries.

NUI Awards

www.nui.ie

The National University of Ireland makes awards available to postgraduate research students.

International Scholarships

University of Galway is ranked in the top 2% of universities globally and is committed to attracting high-calibre students from around the world. To this end, the university offers a range of scholarships to students from a number of countries, in line with our strategic international priorities. Scholarships can vary from year to year, so we recommend you review them on our website for the latest information.

There are a number of external funding sources for international students, and we recommend exploring funding options in your own country. We list below some of the scholarship bodies the university collaborates with, but there are others you may wish to research yourself.

Irish Fulbright Commission: Fulbright US Student Awards www.fulbright.ie

The Fulbright Commission of Ireland awards grants to Irish and EU postgraduate students, scholars, and professionals to study, research, and lecture in the United States, and to US students to do the same in Ireland.

Examples of External Funding Sources for Students

Ireland Fellows Programme www.irishaidfellowsips.ie

Irish Fulbright Commission: Fulbright US Student Awards www.fulbright.ie

The Fulbright Commission of Ireland awards grants to Irish and EU postgraduate students, scholars, and professionals to study, research, and lecture in the United States, and to US students to do the same in Ireland.

China Scholarship Council apply.csc.edu.cn/csc

Funding for Australian Students: The General Sir John Monash Awards www.johnmonash.com/applications

IUA-Chilean ANID scholarship programme www.iua.ie/for-students/international-students/anid/

Education in Ireland www.educationinireland.com/en

Government agency responsible for promoting Irish education overseas. Lists various funding opportunities for international students studying in Ireland.

More Funding Bodies

- Paras Education Foundation (TPEF)
- Health Research Board
- International Scholarship Resources
- Open Society Foundations
- Research Careers Ireland

General Information

www.revenue.ie: Information on how income arising from a scholarship is exempt from tax.

www.studentfinance.ie: Information on financial support for further and higher education.

www.susi.ie: Website for applications for student grants.

Postgraduate Fees and Funding

Postgraduate Tuition Fees

Fees quoted are per annum. For course durations greater than 1 year, the continuing years will be subject to a 2% price increase per annum. Please check www.universityofgalway.ie/student_fees/ for methods of payment.

International Student Fees

International student fees may be paid in full prior to registration or 50% of fees may be paid before registration* and the balance paid in full before 31 January 2027.

*Depending on visa requirements, students may need to pay €6,000 or 50% as part of their visa approval/application.

For more see www.universityofgalway.ie/student-fees/international

Deposit—Taught Courses Only

To secure a taught course postgraduate place at University of Galway, a deposit is payable at offer/acceptance stage. The deposit is usually €500 but can be €1,000 for some courses. The deposit payment is deducted from your course fee at registration. If you do not register, then this deposit is not refundable. However, if you did not attain the stipulated conditions of your offer when a conditional offer was originally made, we will refund the deposit.

Government Grants

SUSI is Ireland's national awarding authority for higher education grants. They offer support to eligible students in approved courses at postgraduate level. To be eligible for a student grant, you must meet certain criteria including:

- Nationality and residency
- Approved course of study and progression
- Income

SUSI supports for postgraduate study

- Postgraduate Fee contribution of up to €5,000 plus a maintenance grant, subject to income thresholds.
- Postgraduate Tuition fee grant of up to €6,270 plus a maintenance grant as a special rate of grant for eligible students.

Check your eligibility and rates at SUSI.ie

Tax Relief

Full-time and part-time students can qualify for tax relief on tuition fees. Further information is available at www.revenue.ie.

Funding

Several sources of funding are available to students who meet certain eligibility criteria. A comprehensive list is available at www.studentfinance.ie.

Scholarships

See pages 3 and 36 for postgraduate scholarship information or visit www.universityofgalway.ie/postgraduate_scholarships

To enhance access and participation opportunities for unemployed and low-income individuals, University of Galway has approved a Scholarship Scheme to reduce fees for applicants receiving Jobseeker's Benefit, Jobseeker's Allowance, Carer's Allowance, One-Parent Family Payment, Disability Allowance, Community Employment Scheme, or Social Insurance Contribution Credits, who wish to enrol for part-time degree, diploma, or master's courses and who meet Department of Social Protection income thresholds.

For more see

<https://www.universityofgalway.ie/courses/fees-and-funding/fees.html>

Government-Funded Initiatives

Springboard began in 2011 as part of the government's Jobs Initiative. It complements the core state-funded education and training system and provides free or 90%-funded upskilling and reskilling higher education opportunities in areas of identified skills need. The ICT skills conversion programme is targeted at jobseekers who hold a Level 8 or equivalent qualification. These can undertake an intensive full- or part-time programme of study and work experience to acquire honours degree-level ICT skills.

For more see www.universityofgalway.ie/adult-learning/springboard/

Education Loans

The main banks and credit unions offer student education loans, usually with low interest rates and/or deferred repayment terms. Consult their websites for more information.

Micro-credentials

Micro-credentials are new learning opportunities on offer by the University and are short, accredited modules for professional development. A learner subsidy has been applied to many of the Micro-credentials on offer. Funding is currently available at either 50% or 80%, visit www.universityofgalway.ie/micro-credentials for further details.

How to apply

We encourage all applicants to apply as early as possible.

Online Application

Applications to most postgraduate programmes at University of Galway are made online via www.universityofgalway.ie/apply

The application system will be open from **1 October 2025** to accept applications for entry to the 2026–27 academic year. Applications are submitted via an online form, and a step-by-step guide will assist you through the process. An application fee will be required, and this is non-refundable. You will require an active email account to use the system.

Application Fee

An application fee of €35 is payable upon making an application and is non-refundable. Upon completing an application for a course, applicants are provided with a discount code to apply for a second course at no extra charge. Therefore the €35 fee will facilitate up to two course applications.

The application fee for the PME/MGO is €100. Once an applicant has completed an application for the PME or MGO, they will be provided with a discount code that will allow them to apply for a second programme with no application fee.

Supporting Documents

When making an online application, most programmes require additional documentation to supplement your application, such as an essay, samples of work, a CV, etc. To see what supporting documents, if any, may be required for your programme, please visit: www.universityofgalway.ie/postgradadmissions/supportingdocuments

After submitting an application you must then upload the supporting documents.

Your application will not be put forward for review until all the supporting documents have been uploaded and your application status (on your online account) changes to 'Marked Complete'.

Other Application Routes

A small number of courses have an alternative application system. These alternate routes will be clearly listed on the relevant programme page in this prospectus and in the online course listing at www.universityofgalway.ie/courses

When Should I Apply?

Applications are open for entry in 2026 on **1 October 2025**. Please note that University of Galway does not set a deadline for receipt of applications (with some exceptions, see next section). Course quotas will be reviewed at specified times during the application cycle. As many courses fill up quickly, you are advised to apply early. Programmes which reach their quota before these review dates will not accept new applications. You are advised therefore to apply early to avoid disappointment.

Offers will be issued on a continuous basis, with the exception of applications for some programmes which are reviewed after the specified closing date. University of Galway aims to review applications within **10 working days** of receiving a complete application, however application reviews for some programmes may take longer.

Upon review of the application, applicants will receive an update on the decision (normally within

four weeks of submitting an application). Candidates who do not have their final degree marks available may be made a conditional (provisional) offer. Applications will continue to be reviewed in the summer months if there are still programme places available.

Exceptions

A number of programmes have specific deadlines, for example:

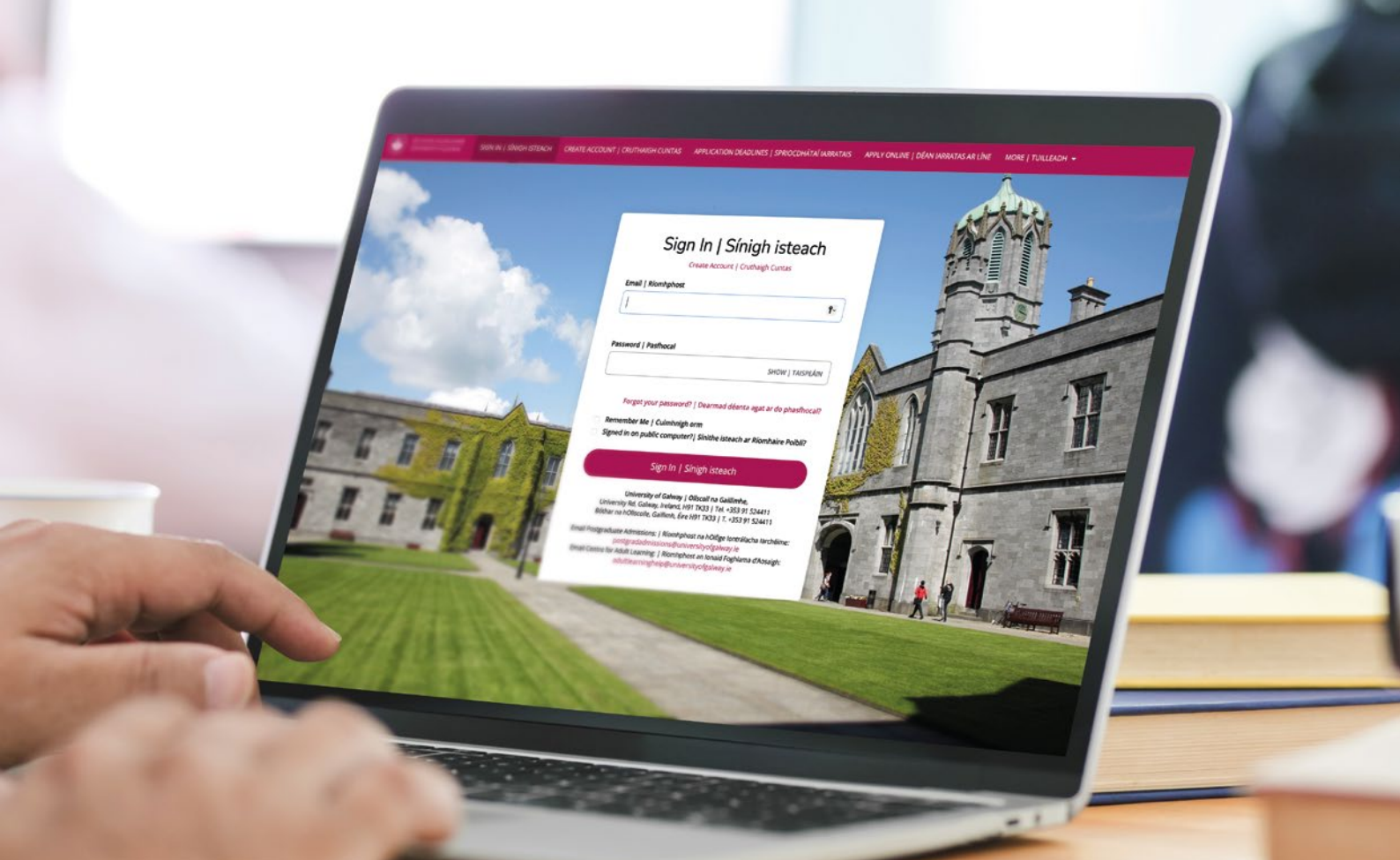
- Professional Master of Education (PME) and Máistir Gairmiúil san Oideachas (MGO);
- Doctor of Psychological Science (Clinical Psychology).

Important: check individual course websites to see closing date for each: www.universityofgalway.ie/courses/taught-postgraduate-courses

Research Applicants

As a research applicant, you are advised, in the first instance prior to submitting an online application, to consult with the academic discipline, school or research centre at University of Galway in which you intend to do your research. At this stage, you should have prepared an outline proposal for submission for the department to consider and support. Before making an application, applicants will be required to find a supervisor (see page 35 for information).

Generally there is no closing date for research applications. However, applications for the PhD degree in the traditional format (i.e., Non-Structured PhD) in the College of Arts, Social Sciences, and Celtic Studies are considered for students commencing their programmes in September and January only. Only applications received before mid-July and mid-November respectively (in the year of study) will meet these commencement requirements.



Note: Structured PhD applicants in the College of Arts, Social Sciences, and Celtic Studies must apply by mid-July to commence in September. In a small number of cases, a closing date has been set up for research programme(s)—you are advised, therefore, to check the specific research course.

Recommendations

We recommend that you apply early in the year (November/December), particularly for programmes that start in the autumn (September/October), especially if you are applying from outside of the European Union (EU) as you will need to apply for a student visa. See page 9 for further information.

You should also allow sufficient time to make any financial, travel and accommodation arrangements when you are offered a place.

Deposit—Taught Courses

If you are successful in obtaining a taught programme place, you will be obliged to pay a non-refundable deposit (€500 generally; €1,000 for some programmes) to secure your place. This deposit is then

deducted from the full course fee. No deposit is required for research programmes.

English Language Requirement

Applicants from outside of Ireland whose first language is not English must provide evidence that their English-language ability meets the required standard for admission. Please visit www.universityofgalway.ie/internationalstudents/apply.html to see the list of English language tests we accept. The English language test must have been taken no more than two years prior to the commencement of your course at the University. Please visit www.universityofgalway.ie/international-students/apply.html. For information on testing centres and dates of English-language proficiency tests, see www.ets.org/toefl and www.ielts.org

Note: The University of Galway TOEFL institution code is 8861.

Further Information and FAQs

For more detailed information on making an application, please visit www.universityofgalway.ie/courses/how-to-apply

If you are an international applicant, please visit www.universityofgalway.ie/global-galway/

Garda Vetting/Police Clearance

Some courses require students to provide garda vetting and/or police clearance certificate(s) prior to registration. Such requirements are clearly noted in this prospectus. You can find more details about the University's police clearance policy at www.universityofgalway.ie/admissions/admissionspoliciesandregulations

Recognition of Prior Learning

The University's Recognition of Prior Learning (RPL) policy may enable learners to gain admission to a programme of study or to gain exemptions from programme modules based on demonstrated learning achieved prior to admission. Some of the programmes of study listed in this prospectus may consider RPL applications. For further information please contact the programme director or visit our RPL website on www.universityofgalway.ie/rpl

Meet Us

On-Campus Postgraduate Events

Thinking About Postgraduate Study? Let's Chat!

If you've been considering postgraduate study, our upcoming on-campus events are the perfect place to start. You'll get a warm welcome, plenty of inspiration, and all the info you need to take the next step in your journey.

Come along and:

- Chat with lecturers and fellow postgrad candidates
- Explore our wide variety of courses
- Take a look around our stunning campus
- Learn about the application process, student supports, and funding options
- Find out about scholarships
- Get a complimentary profile picture taken for LinkedIn.

More information, including how to register for each, at: universityofgalway.ie/postgraduateopenday

Postgraduate Open Evening, November 2025

Join us for a relaxed and welcoming evening of informal networking, specially designed for current undergraduate students, working professionals and those thinking about returning to study.

Whether you're looking to upskill, change direction, or explore new career paths, this is a great opportunity to get the information you need.

Chat with our teaching and research staff, and connect with others who, like you, are thinking about their next big move.

When: Tuesday, 11 November 2025

Where: Bailey Allen Hall, 4-6pm

Postgraduate Open Day, January 2026

A great chance to explore everything you need to know about postgraduate study, all in one place! Chat with staff and current students, drop by our CV clinic, find out about scholarships and funding, and get the inside scoop on the courses that interest you.

When: January 29th, 2026

Where: Bailey Allen Hall, University of Galway, 12-2pm and 5-7pm

We'd love to see you there!

Other Postgraduate Events

University of Galway also exhibits at other postgraduate events.

To see where you can meet us in 2025-2026, visit: universityofgalway.ie/postgradevents



Are you a current undergraduate student at University of Galway?

If you're thinking about doing a master's and would like to chat one-on-one with our Postgraduate Officer, we'd love to meet you!

Just scan the QR code to book a friendly, informal appointment and get all your questions answered.



Dates for Your Diary

Graduate Jobs Fair:

Tuesday 23 September 2025
11am-3pm

Postgraduate Open Evening:

November 11 2025, 4-6pm

Postgraduate Open Day:

January 29th 2026, 12-2pm
and 5-7pm

Internship and Graduate Jobs Fair:

Tuesday 27 January 2026
11am-3pm

Campus Tours

Why not take a guided tour of our beautiful campus to get your bearings and absorb the atmosphere.

Email to book: campustours@universityofgalway.ie



Important: This hard copy prospectus lists all programmes on offer, at the time of going to press, for entry in 2026. Details of new programmes on offer subsequent to the printing of this prospectus will be listed online at: www.universityofgalway.ie/newcourses. The information contained in this prospectus is, to the best of our knowledge, true and accurate at the time of publication. The content of the prospectus is for information purposes only and should not be viewed as the basis of a contract between students and the university.

University of Galway reserves the right to amend programmes or regulations at any time without notice; we may re-open previously closed programmes to accept applications in the event of programme quotas not being met. The university also reserves the right to withdraw programmes periodically for any reason (e.g., insufficient numbers).

The university reserves the right to amend course offerings, syllabuses, course delivery methods, examinations, fees, regulations or rules or substitute modules in response to any circumstances outside of the reasonable control of the university.

Professor Chaosheng Zhang and Fáilte Ireland kindly supplied some of the photographs included in this publication.



OLLSCOIL NA GAILLIMH
UNIVERSITY OF GALWAY



Where will
it take you?

universityofgalway.ie/choose-postgrad
[e. postgrad@universityofgalway.ie](mailto:postgrad@universityofgalway.ie)



University
ofGalway.ie